



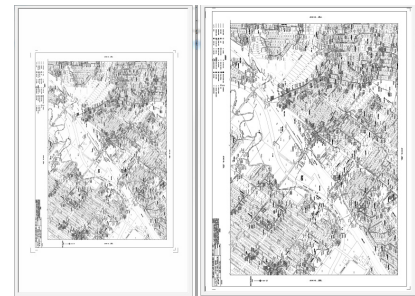
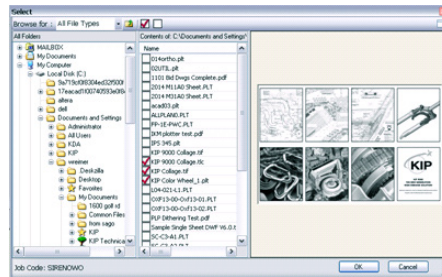
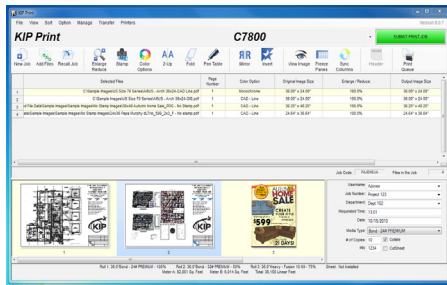
KIP Print

KIP Print network printing software is an easy to use application designed to provide operators with a fast and accurate means of producing high quality print sets from all types of wide format digital files.

An intuitive ribbon style interface with an emphasis on job building; featuring column browsing, color thumbnail previews and total preflight control. Color and B&W documents are efficiently selected for printing in the preferred sequence with the ability to remove white borders from images and designate custom output preferences before print submission.



KIP PRINT GALLERY



Intuitive Ribbon Style Interface

Add Files & Build Jobs Easily

Remove White Borders

KIP Print Key Features	B&W	Color
Interactive Graphical User Interface	•	•
Easy to Use Automated Installation and Setup	•	•
Windows Style Ribbon Bar for Easy Feature Selection	•	•
Thumbnail Preview and Image Size While Selecting Files	•	•
Graphical Choice of Predetermined Image Settings	•	•
Force Size Scaling to Page Size and Roll Width	•	•
Two-Up Printing for Multicopy Nesting	•	•
Remove White Borders from Images	•	•
Output Size Updates as Scaling is Adjusted	•	•
WYSIWYP Thumbnail Image Viewer	•	•
Custom Job Build Columns	•	•
Re-order and Set Individual Settings for Multi-Page Files	•	•
Custom Fold Pattern for Each File	•	•
KIP Secure Print	•	•
KIP Cost Review Application	•	•
KIP Track System	•	•

KIP Print Additional Features	B&W	Color
Remove White Border Feature	•	•
Displays Original Image Size and Output Size	•	•
Apply Settings to Individual Files or Complete Jobs	•	•
Supports TIF & PDF File Formats	•	•
Job Building Features		
Add/Remove Job Build Columns	•	•
Reorganize Job Build Columns	•	•
Custom Job Build Column Width	•	•
Advanced Job Building: Cut & Paste, Drag & Drop	•	•
Show Multipage as Individual Sheets	•	•
Move/Re-Order Multipage Files	•	•
Two-Up Printing for Multicopy Nesting	•	•
Save Jobs for Future Printing	•	•
Load Saved or Compressed Jobs	•	•
Add files Numerically or Alpha Numerically	•	•
Selects Files From: Cloud, KIP Mailbox, Local, Print History	•	•

KIP Print Additional Features	B&W	Color
File Settings		
Select PDF Dither Patterns	•	•
Control PDF Min Feature Size	•	•
Manage PDF Transparency Features	•	•
Unlimited Enlarge/Reduce Templates/Schemes	•	•
Unlimited Color Option Presets	•	•
Integrated On-Line Folder Configuration	•	•
Allow Copies per File by Job	•	•
Create & Manage Custom Pen Tables	•	•
Manual or Automatic Image Rotation	•	•
Stamp Settings		
Use Text & Graphics Stamps	•	•
Create Unlimited Text Stamps	•	•
Create Unlimited Graphic Stamps	•	•
System Administration		
Configure FTP as Print Destination	•	•
Create Print Productivity Reports	•	•
Create Scan Productivity Reports	•	•
Generate Meter Read Report	•	•
Manage Printer Queue	•	•
Connect to Unlimited # of KIP Printers	•	•
Password Protect Administrative Features	•	•
Manage Mailboxes - Create/Delete	•	•
Real Time Printer Status - Media, Meter, Toner etc...	•	•
File Viewing		
Thumbnail Preview while Selecting Files	•	•
Image Size Preview while Selecting Files	•	•
Document Folding		
Custom Fold Patterns per File	•	•
Quick Rotate via Right Click	•	•
Adjustable Image Positioning for Proper Folding	•	•
Selectable Automatic Image Justification	•	•

• = New/Enhanced Available in Latest Version