

# KIP External Hard Drive Installation Guide





## Contents

Parts List .....	2
Installation.....	2
Powering On.....	3
POWERING OFF.....	4
GHOSTING/FACTORY RESTORE .....	4
GHOST FROM DVD: .....	5
INTERNAL FACTORY RESTORE:.....	5

# KIP External Hard Drive



## *Parts List*

- 1 - Rosewill SATA to USB3.0 Hard Drive Docking Station
- 1 – Power Supply
- 1 – USB 3.0 Connector Cable
- 1 - Instructions



# KIP External Hard Drive



## Installation

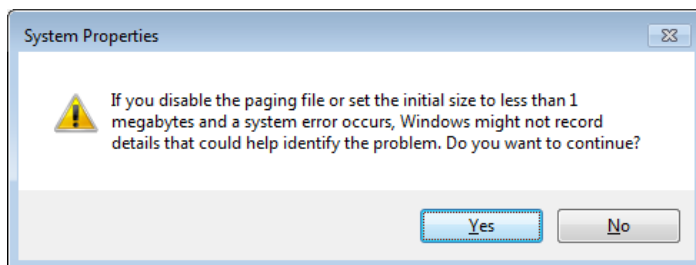
1. Open Box and remove all parts
2. Power off KIP Printer
3. Open (remove) back of KIP Printer the external device will be installed on.
4. Connect 3.0 USB cable to the Docking station and the KIP KS8 controller.
5. Put KIP Printer back panel back on

## Powering On

1. With the KIP Printer/KS8 OFF, plug USB HDD docking station into USB 3.0 port.
2. Insert HDD into docking station and power it ON.
3. Turn the printer ON.

### Note:

Once OS is booted, you may see the following messages on the desktop before the GUI is loaded.

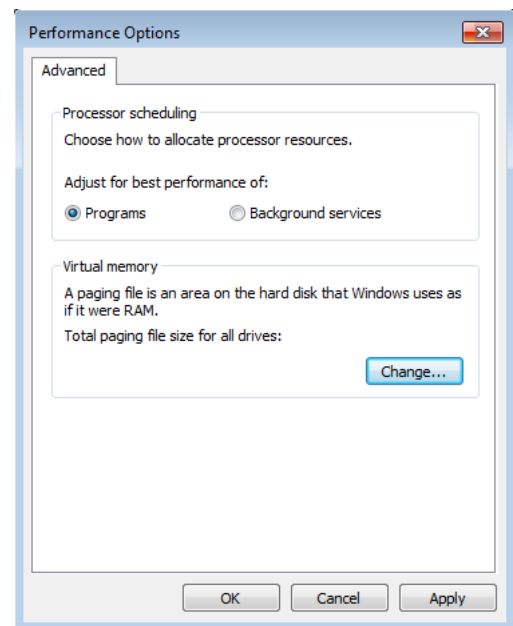


### Explanation:

WSe7 and Windows 7 do not support the concept of a paging file on USB/SD/Flash, etc.

What does this mean?

Traditionally, when the capacity of the physical RAM is occupied, a paging file (pagefile.sys) is used for the overflow.



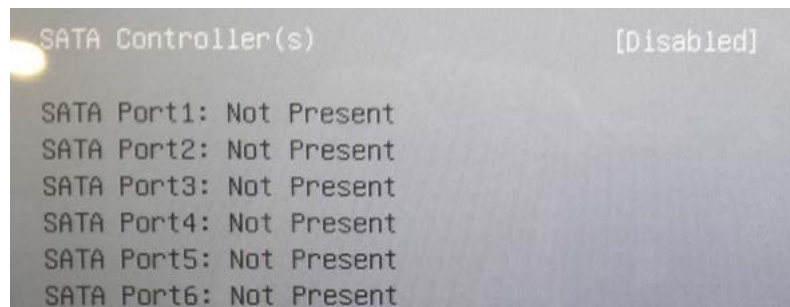
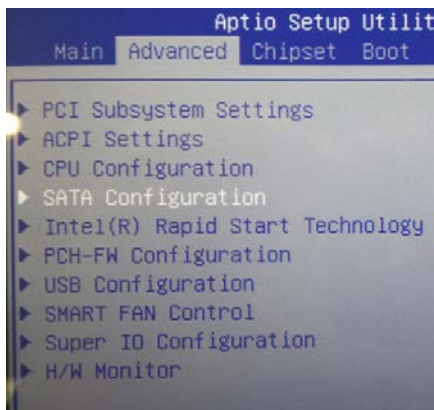


## *POWERING OFF*

1. Turn off the printer. Wait 2 minutes or until KS8 shuts down.
2. Power off the HDD docking station.
3. Remove HDD from docking station.

## *GHOSTING/FACTORY RESTORE*

If customer does not wish to disconnect/remove the HDD in the KS8, the SATA Controller must be DISABLED in the BIOS. Otherwise, no changes are necessary.





## *GHOST FROM DVD:*

1. Start the ghosting process (USB DVD ROM is necessary).
2. Once ghosting is complete you will return to the Imaging Loader.
3. Once you arrive at this screen it is necessary to power OFF the printer for 2 minutes.
4. Power printer ON and proceed with the KS8 Setup Wizard as usual.



## *INTERNAL FACTORY RESTORE:*

1. Factory Restore is initiated the way it always has.
2. Once the Factory Restore has commenced you will see a message stating **“Reboot and select proper boot device or insert boot media in selected boot device and press a key.”**
3. Once you arrive at this screen it is necessary to power OFF the printer for 2 minutes.
4. Power Printer ON and proceed with KS8 Setup Wizard as usual.



U.S.A. ■ Phone: (800) 252-6793 ■ Email: [info@kipamerica.com](mailto:info@kipamerica.com) ■ Website: [www.kip.com](http://www.kip.com)

CANADA ■ Phone: (800) 653-7552 ■ Email: [info@kipcanada.com](mailto:info@kipcanada.com) ■ Website: [www.kip.com](http://www.kip.com)

KIP is a registered trademark of the KIP Group. All other product names mentioned herein are trademarks of their respective companies. All product features and specifications are subject to change without notice. Complete product specifications are available upon request.