

KIP Flexi Sign Operators Guide



KIP Flexi Sign Guide



Contents

Product Description	1
System Requirements	1
KIP Driver Setup	3
KIP Driver Features	11

KIP Flexi Sign Guide



Product Description

FlexiSIGN is a sign design and RIP product from SA Incorporated (www.saintl.biz). It is primarily used by the graphics designers and production operators to design and RIP/Print signs and posters. The FlexiSIGN product version 10.0.2 allows for RIP and printing of supported files to the KIP Color 80 and KIP C7800 printer.

The FlexiSIGN Production Manager software can be configured to RIP file data and place it in a Hot Folder that is monitored by the KIP Color 80 or KIP C7800 IPS (KIP Unattend software). The file data is then printed by the KIP Unattend.

FlexiSIGN Features

- True Adobe RIP
- Pantone Color support (based on available color gamut)
- RIP and Print
 - Single original multiple copy
 - Single original nest on single page
 - Instant re-printing from Production Manager queue
- Color Profile
 - Create custom Output Profiles based on DPI and Media
 - SO Diffusion dithering
- Color Mapping – exchange/adjust color for Vector data (PS/EPS/PDF) or Raster data (bitmap) or both.

System Requirements

KIP Color 80 and C7800 Requirements

- Software Version: KIP Unattend 7.2.275 or higher
- X-Rite Eye One Spectrophotometer

Flexi Software Version

- Flexi Production Manager 10.0.2 build 1604 or higher

The location of the FlexiSign software installation can be completed in one of two ways. The Flexi software can reside #1) on a workstation PC or #2) on the KIP Color 80 IPS. When FlexiSIGN is installed on a workstation PC, the Hot Folder for transmitting the final file data would reside on a Network server and the KIP Color 80 IPS would then monitor this folder for Flexi jobs. When FlexiSIGN is installed on the KIP Color 80 IPS, the Hot Folder can reside on the C: drive of the KIP Color 80 IPS.

Configuration #1 – FlexiSIGN installed on another workstation PC for C7800.

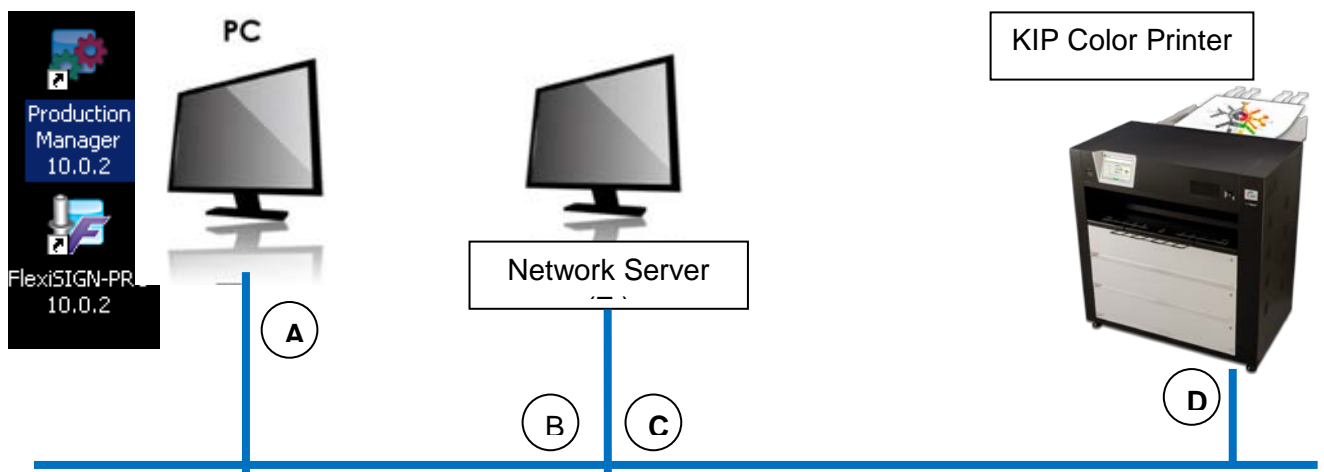
A. Data is converted on the PC by FlexiSIGN down to the CMYK layers.

KIP Flexi Sign Guide



- B. Flexi transmits the job to the Hotfolder on the Network Server; a shared Drive and Directory.
Eg: Z:\KIP\HotFolder
- C. KIP IPS (KIP Unattend) will monitor the shared Drive and Directory on the Network Server and retrieved the print the data from the shared Drive and Directory.
- D. Job displays in KIP Unattend and begins printing.

In this configuration the power of the PC may not be sufficient to RIP (convert) the data quickly. Another disadvantage is that the converted file data must first be transferred to the Network Server and then transferred again to the KIP Color 80 IPS. For increased production speed, Configuration #2 is a preferred method.



Configuration #2 – FlexiSIGN installed on the KC 80 IPS.

- A. Data is converted on the PC by FlexiSIGN down to the CMYK layers.
- B. Flexi copies the job to a Hotfolder that is a local drive and directory (eg: C:\monpath1\request).
- C. KIP Color 80 IPS will monitor the Hotfolder on the local drive and display the print the data and begin printing.

This configuration will allow for the quickest data conversion but does not allow other Flexi users to transmit data to the KIP Color 80 IPS because the drives and directories on the IPS are not available to other network users.





KIP Driver Setup

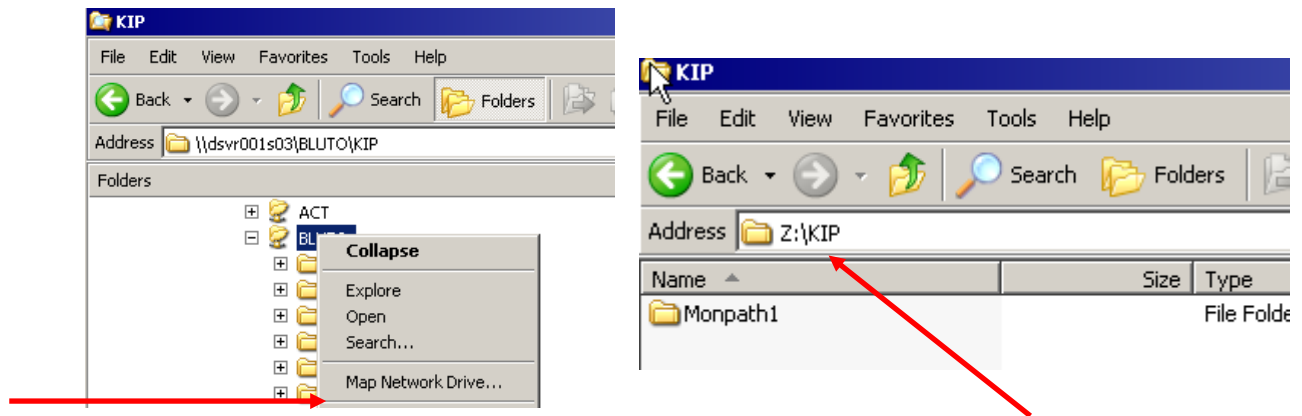
Setup Hotfolder; Drive and Directory

In order for the Flexi data to print, a Hotfolder is required to hold the final data prior to the KIP Color 80 IPS monitoring that Hotfolder and printing the data.

Configuration #1 – FlexiSIGN software installed on PC Workstation and Hotfolder resides on Network Server.

When the Network Server is utilized to hold the Hotfolder, the IT admin's help may be required to create the Hotfolder and map both the PC Workstation and KIP Color 80 IPS/C7800 IPS to the Hotfolder.

- A. Setup the Hotfolder on the Network Server. EG: \\Servername\sharename\directory may equal Z:\KIP\MonPath1.
- B. At the KIP Color 80 IPS or C7800 IPS, connect to the Servername and Sharename and "map" this directory and choose a Drive letter.



Example of mapping to Servername of **DSVRS001S03**, sharename of **BLUTO** to create a Z: drive letter. Then the admin creates the Z:\KIP\Monpath1 Hotfolder directory. Note: your Servername and Sharename will differ from this example. This information will be required to finish setting up both the KIP Color 80 IPS in the KIP Unattend – Misc Configuration and on PC Workstation for Flexi Production Manager.

- C. At the PC Workstation (with Flexisign Production Manager) please also configure the PC to access the same Servername and Share. It is possible that the drive letter may be different.

Configuration #2 – FlexiSIGN installed on KIP Color 80 IPS and Hotfolder resides on KIP Color 80 IPS.

When the Flexi Production Manager software is installed on the KIP Color 80 IPS the Hotfolder can be located on the C: Drive of the KIP Color 80 IPS.

- A. Setup a new Hotfolder on the KIP Color 80 IPS or use an existing Monitor Path such as C:\Monpath1\Request.

Note: This information will be required to finish setting up both the KIP Color 80 IPS in the KIP Unattend – Misc Configuration and for Flexi Production Manager.

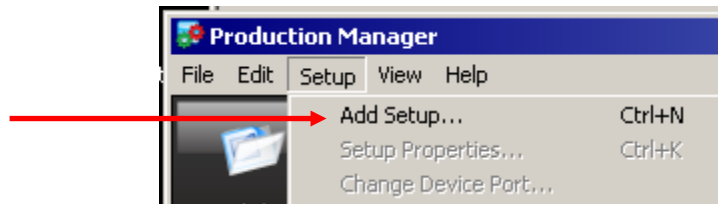
KIP Flexi Sign Guide



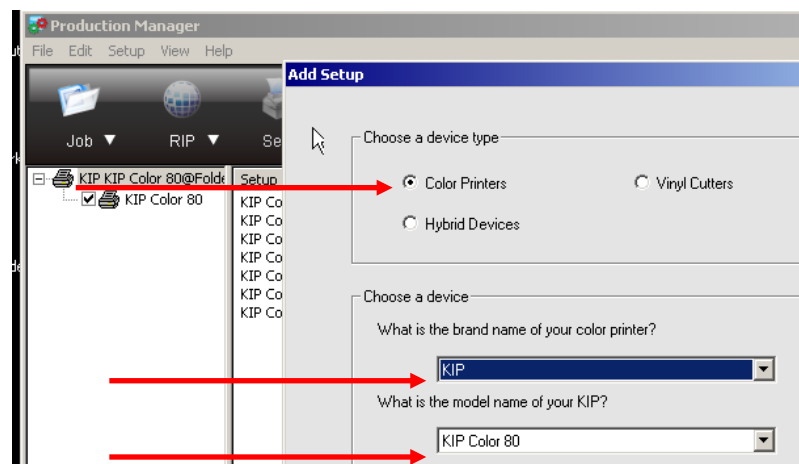
Add KIP Driver to Production Manager

Once Flexi 10 has been installed and upgraded to include the KIP Driver (see your FlexiSIGN instructions on how to complete this). After a (Hotfolder) Drive and Directory has been configured in the previous steps, it is then possible to add the KIP Driver in Flexi Production Manager and proceed with configuring that Hotfolder in Production Manager.

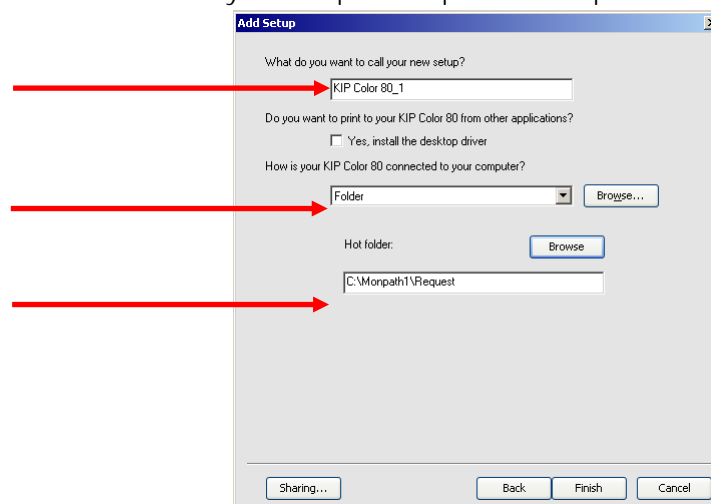
- A. In Production Manager, select **SETUP** and **ADD SETUP**.



- B. Choose **COLOR PRINTERS**, then brand name of **KIP**, and model name **KIP COLOR 80**. Choose **NEXT** to proceed.



- C. Add your own name for the Setup of KIP Color printer. For how the KIP Color 80 is connected choose **FOLDER**. Enter or browse to the Hotfolder and add the correct drive and directory as setup in the previous steps.



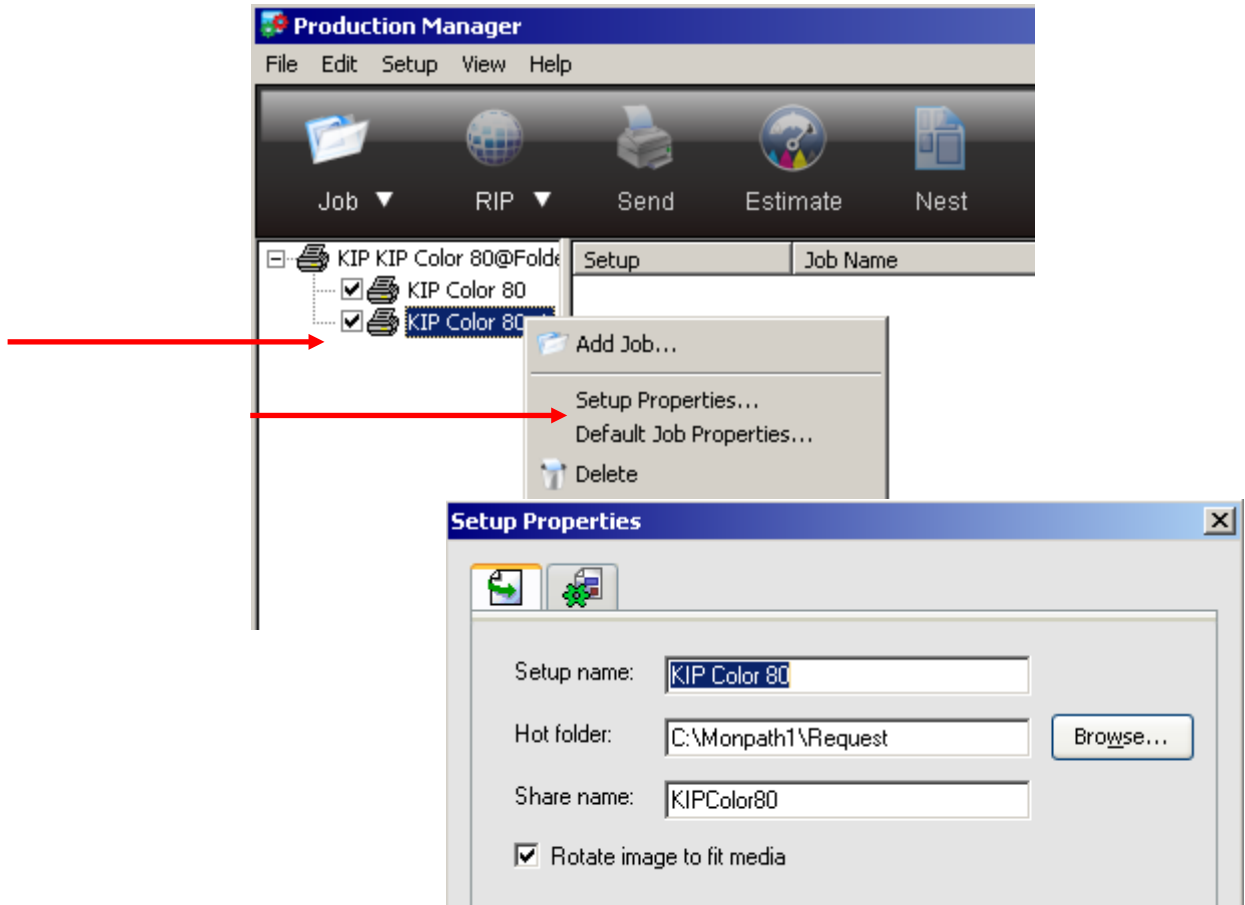
KIP Flexi Sign Guide



Configure Default Job Settings

It is necessary to configure Default Job Settings including the Hotfolder prior to configuring the Media Profiles or printing any jobs through Flexi.

- A. Right click on the Printer Setup and choose **SETUP PROPERTIES**, then Browse to the Hotfolder location.



KIP Flexi Sign Guide



Configure Media Profiles using the Color Profiler

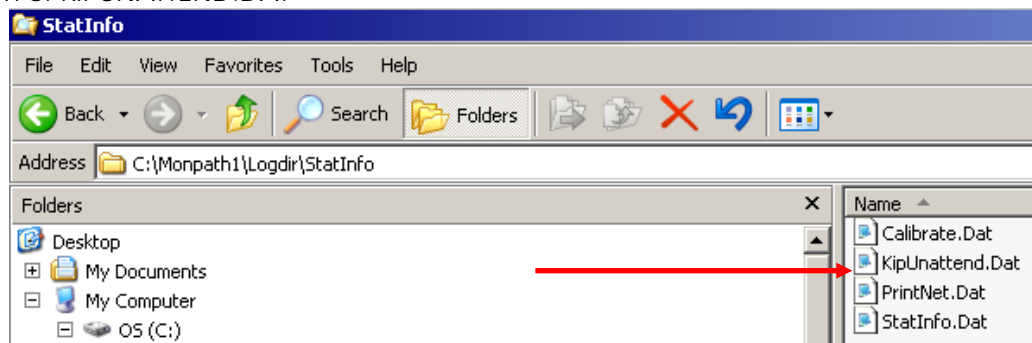
Prior to configuring the Default Job Settings, it is necessary to create at least two Media Profiles. This entails copying the Media Names from the KIP Color 80 IPS and then printing of several targets on the media you intend to use and then using an Xrite Eye One Spectrophotometer to scan the targets.

- A. Manually copy the Media Names to the Flexi software.

The Flexi software does not read the media list and names from the KIP Color 80 IPS automatically. It is necessary to manually copy the media files from a special file and location on the KIP Color 80 IPS to where the Flexi software is monitoring the media names. On the KIP Color 80 IPS – locate the file called KIPUNATTEND.DAT in the folder

D: or C:\MONPATH1\LOGDIR\STATINFO.

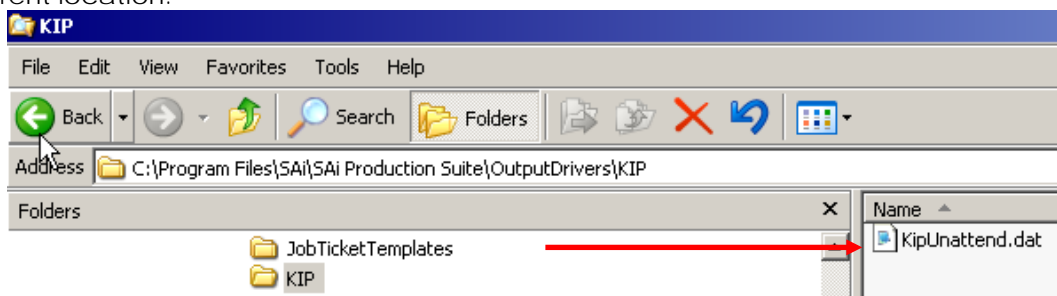
Location of KIPUNATTEND.DAT



Copy the KIPUNATTEND.DAT or IPSUNATTEND.DAT (C7800) to the Flexi software location:

C:\PROGRAM FILES\SAI\SAI PRODUCTION SUITE\OUTPUTDRIVER\KIP

Note: if the Flexi software is installed on a PC Workstation, this Flexi software location may be a different location.

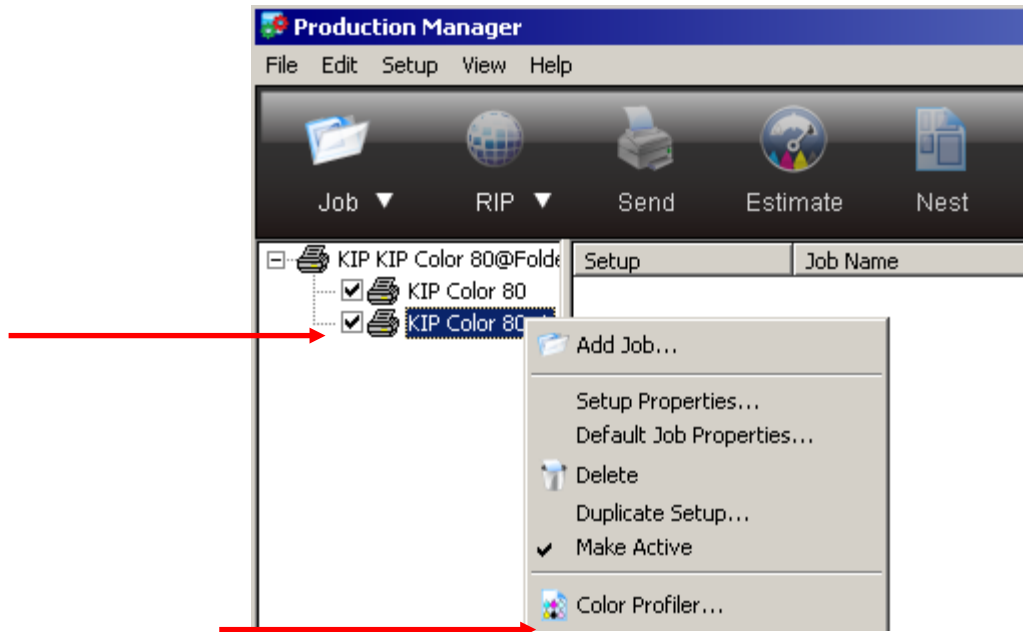


Note: In order for the Flexi software to see updated Media Names that have been added on the KIP Color 80 IPS, it will be periodically necessary to copy the KIPUNATTEND.DAT to the Flexi software location noted above.

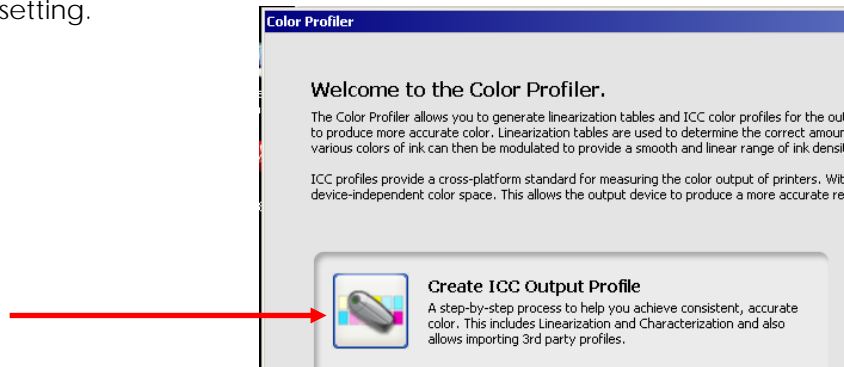
KIP Flexi Sign Guide



- B. Right click on the Printer Setup and choose **COLOR PROFILER**.



- C. Choose **CREATE ICC OUTPUT PROFILE** to create a profile for a specific media and dither setting.



- D. In the Profile Setup choose **DEVICE: KIP Color 80**, choose the **MEDIA** and select the media name you have configured at the KIP Color 80 IPS. It will be necessary to use the XRite Eye One Spectrophotometer to complete these steps as per the Flexi documentation.

Note: the MEDIA list is dependent on the KIPUNATTEND.DAT as set in the previous steps. If your media name is not in this list, then it is necessary to shut down the Flexi software, copy the KIPUNATTEND.DAT from the KIP Color 80 IPS to the Flexi software location and then re-start the Flexi software.

Choose **RESOLUTION**: 600x600

Choose **COLOR MODE**: CMYK

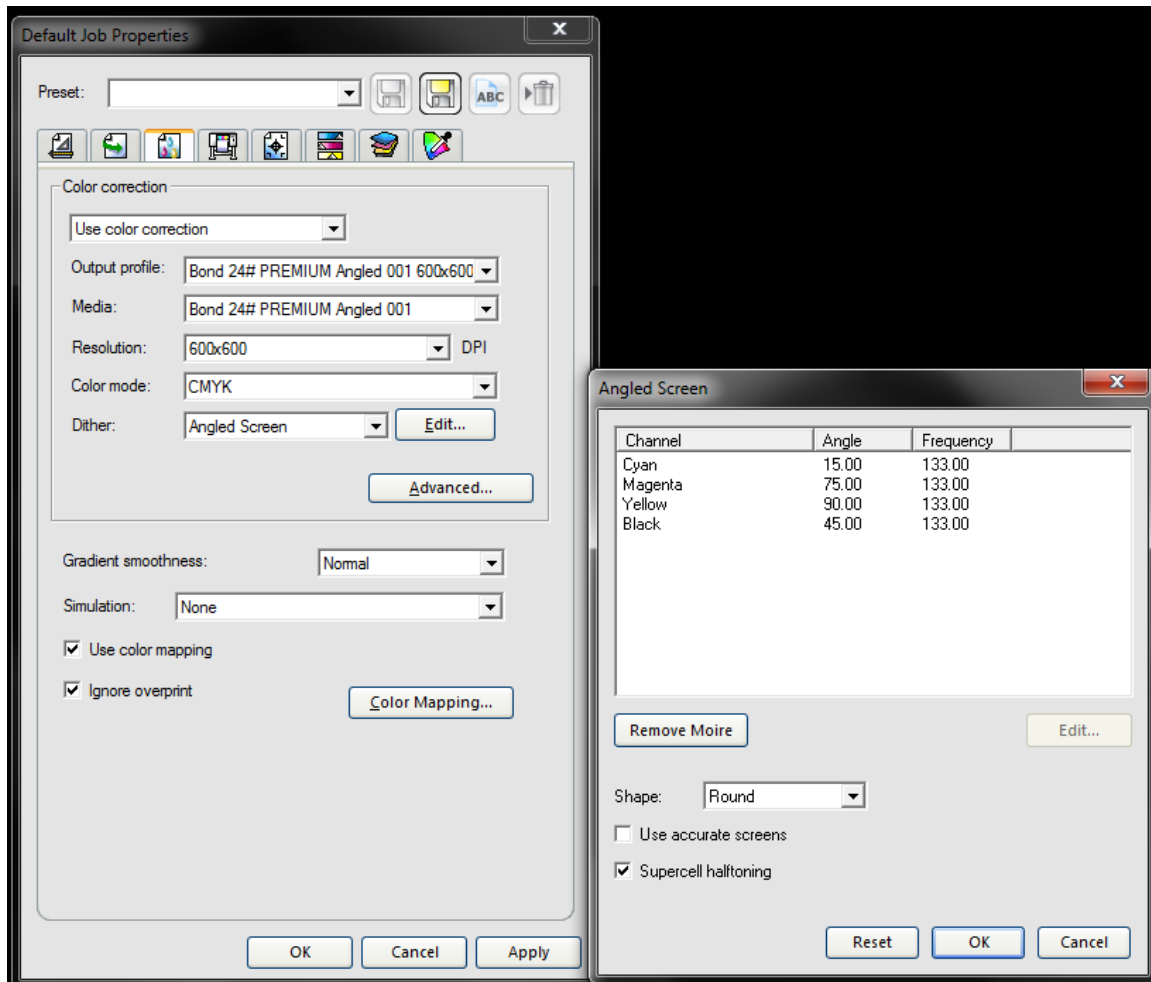
Choose **DITHER**: Angled Screen (this provides the best setting at this time)

Edit the Screen Pattern to ROUND and configure the Angles and LPI as shown.

Note that prior to any printing, it is important to set the same **Dither** to **Angled Screen** pattern in the **DEFAULT** settings in order to use the correct **Angle** and **Frequency** as shown below.

No part of this publication may be copied, reproduced or distributed in any form without express written permission from KIP. © 2014 KIP.

KIP Flexi Sign Guide

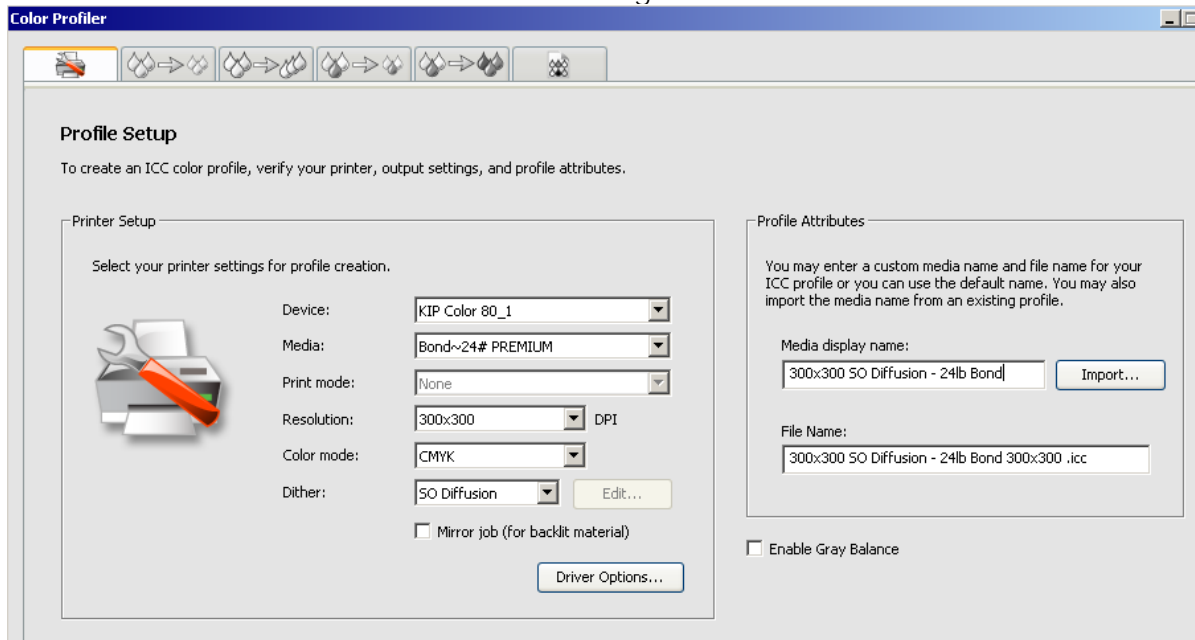


Enter a **MEDIA DISPLAY NAME** that does NOT contain any ~ symbols. Otherwise the Profile will fail to save at the end of the setup process.

KIP Flexi Sign Guide

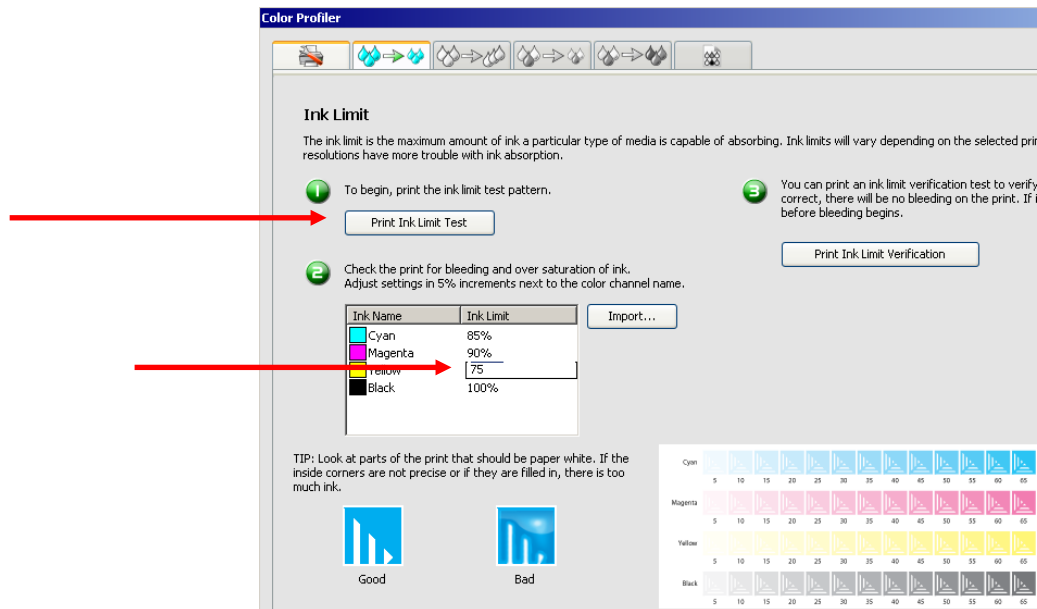


Note: We suggest that the user create repeat the Profile Setup for two different RESOLUTIONS. One Profile Setup at a **RESOLUTION** of 300 dpi and one at another RESOLUTION of 600 dpi. This allows for choose two different print modes. Choose **NEXT** to move to the INK LIMIT settings.



E. INK LIMIT settings.

When setting the INK LIMIT we suggest that once the Ink Limit Test Pattern is printed and reviewed that the operator should choose ink limits in the range of 75 – 90 percent.



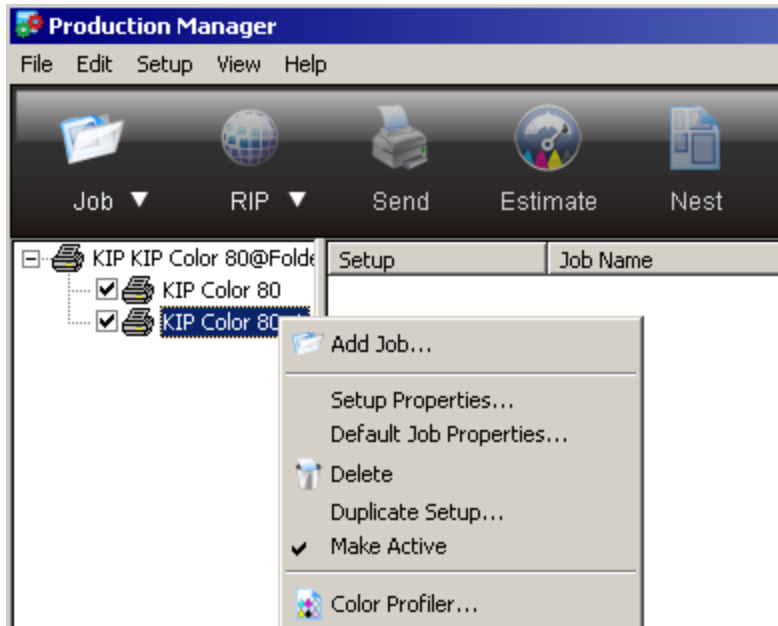
KIP Flexi Sign Guide



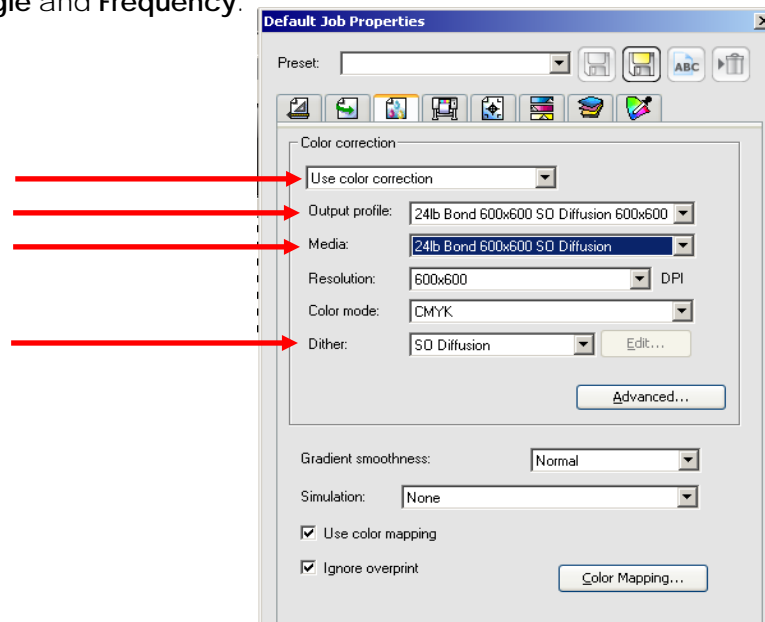
Configure Default Job Settings

It is necessary to configure Default Job Settings including the Hotfolder prior to printing any jobs through Flexi.

- A. Right click on the Printer Setup and choose **DEFAULT JOB PROPERTIES**.



- B. Configure the **DEFAULT JOB PROPERTIES** that will be used each time a job is started. Remember to use the Dither send to **ANGLED SCREEN** and to edit the **Dither** pattern and **Angle** and **Frequency**.





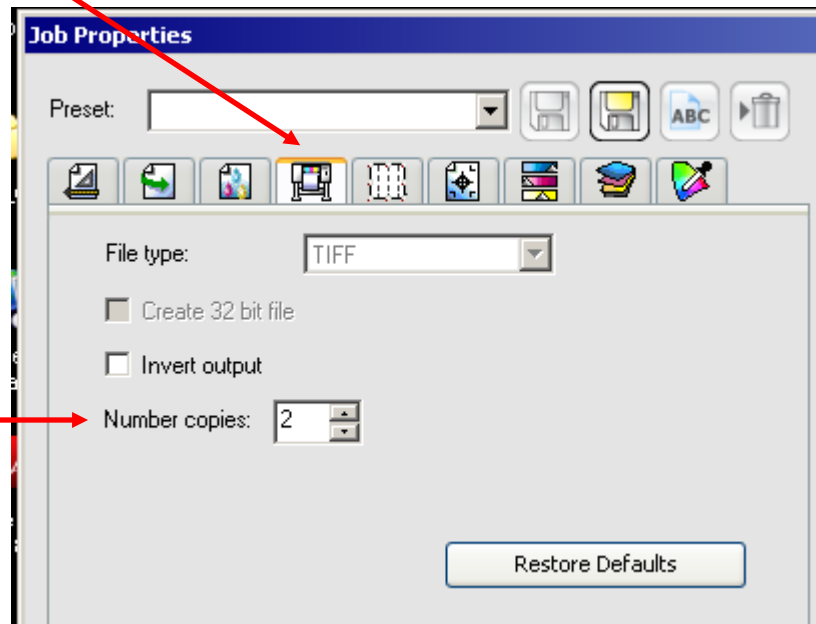
KIP Driver Features

Specific KIP Printer Options - Setting the number of Copies

In order to set the number of copies and obtain individual copies of each print it is necessary to set the copy count in a special location. Otherwise the copies will be nested on a single piece of paper.

Choose the **PRINTER OPTIONS** tab

Set the **Number of Copies**





U.S.A. ■ Phone: (800) 252-6793 ■ Email: info@kipamerica.com ■ Website: www.kip.com

CANADA ■ Phone: (800) 653-7552 ■ Email: info@kipcanada.com ■ Website: www.kip.com

KIP is a registered trademark of the KIP Group. All other product names mentioned herein are trademarks of their respective companies. All product features and specifications are subject to change without notice. Complete product specifications are available upon request.