

UPGRADING KIP SOFTWARE  
TO WINDOWS 7



# KIP Upgrading to Windows 7



## Contents

KIP System Upgrade.....	2
Upgrading Version 7.2 to Version 7.5 with Windows 7 .....	3
Upgrading Version 7.3/7.4 to Version 7.5 with Windows 7.....	10

# KIP Upgrading to Windows 7



## *KIP System Upgrade*

This document provides backup and upgrade instructions for the listed KIP Models running versions 7.2, 7.3 or 7.4 software to Windows 7 Operating System with the KIP 7.5 software.

- 700
- 7100
- 7700
- 7900
- 9900

Note: This upgrade must be purchased for each KIP Printer. Please contact KIP Customer Care Center (KC3) for assistance.

[KC3@kipamerica.com](mailto:KC3@kipamerica.com)

800-252-6793

### Ordering Procedure

Item = DIGOS7UG

Description = KIP Software Upgrade 7.5 – WSe7

Fee = Contact KIP KC3 for MSRP in your local currency & discounts

Please note there is a fee for the field upgrade to version 7.5 as there is a change in operating systems. Please contact your local KC3 for pricing. Standard MSRP pricing and dealer discounts are applicable.

Dealer purchase orders must include the following information to expedite the order process:

Printer Serial Number

Controller Serial Number

Folder Serial Number (if applicable)

Method of shipment of the upgrade package

### Key Codes: Color Advanced

Color software keycodes (for KIP Color Advanced) for version 7.4 will not function in the 7.5 or higher release. New color codes will be required if you update from 7.4 to 7.5. These new key codes are included with the purchase of the KIP 7.5 System Software update license noted in "Ordering Procedure".

**\*KIP is not liable for any loss of users File(s) or Accounting Data which is stored in the controller hard drive regardless of loss event.**



## *Upgrading Version 7.2 to Version 7.5 with Windows 7*

If the printer is currently on **7.2** please see below. Only pieces of the files will be used based on the file structure changes from 7.2 to 7.3 and up.

Please obtain the following information prior to re-formatting the system in order to maintain the desired machine configurations. Once the OS upgrade is complete you will manually copy these files, folders or codes back in to assist with re-configuration:

**Monochrome Keycode** – This is located in the winuntd.ini file in the following location depending on version. Please back this file up for reference if needed.

C:\Program Files\KIP\Unattend\winuntd.ini

Look for the line KeyCode= and make a note of the code.

Note the configured sleep setting values: (example)

```
ShutDownDelay=0
SleepWarmDelay=840
SleepColdDelay=3540
SleepColdStandBy=False
ColdStartTime=
ColdStopTime=
AdvancedSleep=False
```

After upgrade the file is located in:

C:\Program Files\IPS\UNATTEND\winuntd.ini

**Note:** The unattend software needs to be closed when re-entering these values and the file saved when complete.

# KIP Upgrading to Windows 7

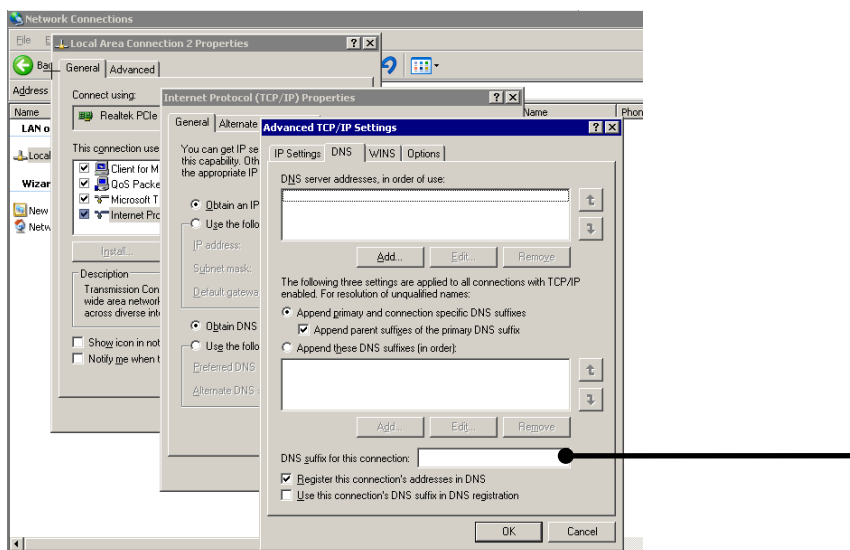


**Network Configuration** – Make a note of the current IP, subnet mask, gateway, dns, and any additional settings under advanced network properties needed to connect at the various locations.

Start / Run / CMD – type ipconfig /all

Or C:\program files\KIP\KIP3000\Config save the file IPVerify.txt

You will need to re-enter the dns suffix information behind the user interface under the advanced tab of TCP/IP properties if previously entered to connect to the SMB locations.



**SMB Folders** – To prevent having to re-enter the SMB locations, backup the following file:

C:\Program Files\KIP\KIP3000\Config\cifs.enc

*After upgrade copy to: C:\Program Files\IPS\IPSGUI\Config\cifs.enc*

**Mono Screen Defaults** – To keep any set defaults backup and copy back in the following files:

C:\Program Files\KIP\KIP3000\Config\COPYSchemes\Program\_Default.ini

C:\Program Files\KIP\KIP3000\Config\STFSchemes\Program\_Default.ini

C:\Program Files\KIP\KIP3000\KIP3000.ini

*After upgrade copy to:*

**Note:** You will need to rename the KIP3000.ini file to IPSGUI.ini

C:\Program Files\IPS\IPSGUI\Config\COPYSchemes\Program\_Default.ini

No part of this publication may be copied, reproduced or distributed in any form without express written permission from KIP. © 2014 KIP.

# KIP Upgrading to Windows 7



C:\Program Files\IPS\IPSGUI\Config\STFSchemes\Program\_Default.ini

C:\Program Files\IPS\IPSGUI\IPSGUI.ini

**Note:** If customer has set up and saved custom schemes the Copy Schemes folder and STF Schemes folder may have other .ini files that will need to be saved as well.

**Dealer Logo Information** – Backup and import the following folder to keep the Dealer info and logo for the ? page.

C:\Program Files\KIP\KIP3000\Dealer

Files to be saved

- dealerlogo.jpeg
- KIP3000Dealer.txt

*After upgrade copy to:*

C:\Program Files\IPS\IPSGUI\Dealer

**Note:** You will need to rename the KIP3000Dealer.txt file to IPSGUIDealer.txt

**Meter Readings** – On the ? screen of the printer make a note of the current values for Meter A and Total Run so you can input these later.

You will receive an internal counter error after the update. Select **No** to the message that asks if the main PCB was replaced.

*After upgrade check to see if values are showing correctly on the ? screen, if not re-enter as follows:*

*Go to ? service, enter the hardware service mode on page 5 (Launch).*

*Login (If unable to login go to serial port setting, auto detection, and hit set after the communication success message and once complete hit back.*

*Login and under special operation input the proper values for the following:*

*Submode 4 – Print Count – Meter A*

*Hit enter, edit, enter value, hit rewrite, return*

*Submode5 – Total Count – Total Run*

*Hit enter, edit, enter value, hit rewrite, return*

# KIP Upgrading to Windows 7



## Color Keycode

Determine if they are using Direct or Advanced Color

Direct

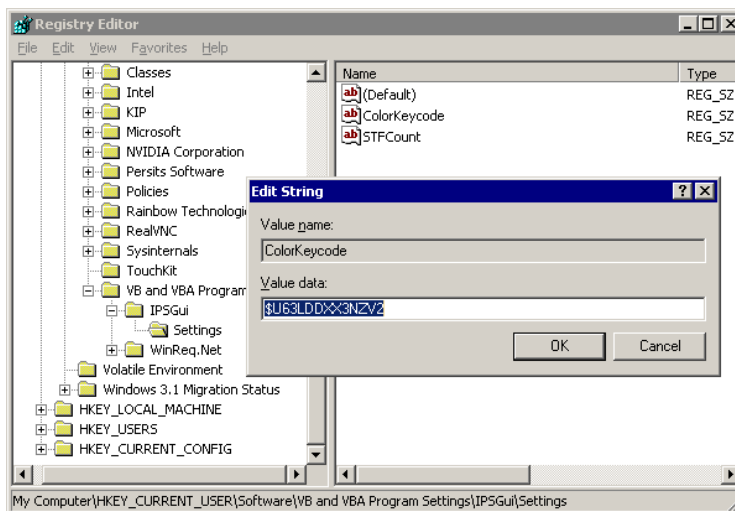


Advanced



**Direct Color Keycode** – To obtain the direct color code close the GUI and unattend software and go to start / run, type regedit and browse to the following location:

HKEY\_Current\_User > Software > VB and VBA Program Settings > IPSGUI > Settings



Double click the Color Keycode value and make a note of the keycode for later use.

# KIP Upgrading to Windows 7



**Advanced Color Keycode** – Obtain the target sheet using the [kipkeycodes.com](http://kipkeycodes.com) website for use after the upgrade or make a note of the code to manually enter as seen in the screenshot below. Click color scan to file or color copy, hit config in the lower left and select the keycode tab.

Printer Options Reprint Email Keycode File Format Cost tracking

Keycode

tVufAN\$np\$)tCsdD(/J8u67\$qv)YqX7W8SLzwDHQheVW/TBiMNxV)2b# Scan Target

IP address of printer

KIP Color Advanced

Version 7.4 SP10

Build No 3.92.13.5

Serial No: 12499011 / Scanner serial number: 12499011

OK Cancel

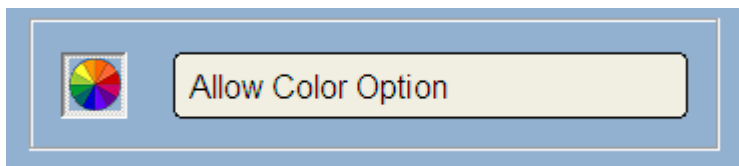
**Note:** there is a file that can be saved that has the color code in it that can be replaced without having to enter the color code again. This file is called Col32.key and is located here:

C:\Documents and Settings\All Users\Application Data\KIP\7.2\KIP Color

*After upgrade copy to:*

C:\ProgramData\IPS\7.5SP1\ipscolor

If any the color buttons do not seem to function (7100) go to ? Service and on the last page select the allow color option button so it shows as seen below.





# KIP Upgrading to Windows 7



**Color Inkjet Printer Configuration** – Make a note of the current IP for the connected color printer if any as you will need to re-connect and re-calibrate this after the update.

- In order to achieve the best quality output it is recommended that a new calibration be performed between the KIP and the Inkjet printer.
- Follow normal procedure for adding an Inkjet to the KIP.

**Folder Configuration** - If the printer has a folder you will want to back up the following files and they can be found here: C:\Program Files\KIP\UNATTEND:

- Kipfoldpresets.ini - Contains all of the Folder Presets previously configured.
- Winuntd.ini – In the 7.2 version of KIP Unattend the structure of the file paths are different. The WinUntd.ini CANNOT be copied from 7.2 and used in the 7.5 system. It will be necessary to compare the old 7.2 version to the new 7.5 version and manually make the necessary changes.

**Below are the necessary folder settings that will need to be manually confirmed/changed:**

[IPS WINDOWS UNATTEND CONFIGURATION]

AFolderDelay=.7

BFolderDelay=.7

CFolderDelay=.7

DFolderDelay=.7

EFolderDelay=.7

A0FolderDelay=.7

A1FolderDelay=.7

A2FolderDelay=.7

A3FolderDelay=.7

A4FolderDelay=.7

OtherFolderDelay=0

LandscapeFolderDelay2=.7

BypassFolderDelay=6

No part of this publication may be copied, reproduced or distributed in any form without express written permission from KIP. © 2014 KIP.

# KIP Upgrading to Windows 7



ESTEFolderClearMaxDelay=45  
ESTEFolderInitDelay=0  
MinCutLength=8.25  
FoldBypass=01  
FolderReprintJamInches=0  
FolderKeyCode=  
UseRigoliFold=False  
IgnoreFoldPresets=False  
UseTempFold=False  
UsePSFold=False  
UseEsteFold=False  
UsePSFold500=False  
FoldSeparatorSheet=False  
DisableFoldReprints=False  
FoldPortraitPaperSelect=False  
SnapToLengthEnabled=False

**As well as all the settings under the following headings:**

[SnapSettings]  
[FoldPresets2.0]  
[MetricFoldPresets2.0]  
[PaperSettings]  
[FolderPaperSettings3.0]  
[MetricFolderPaperSettings3.0]

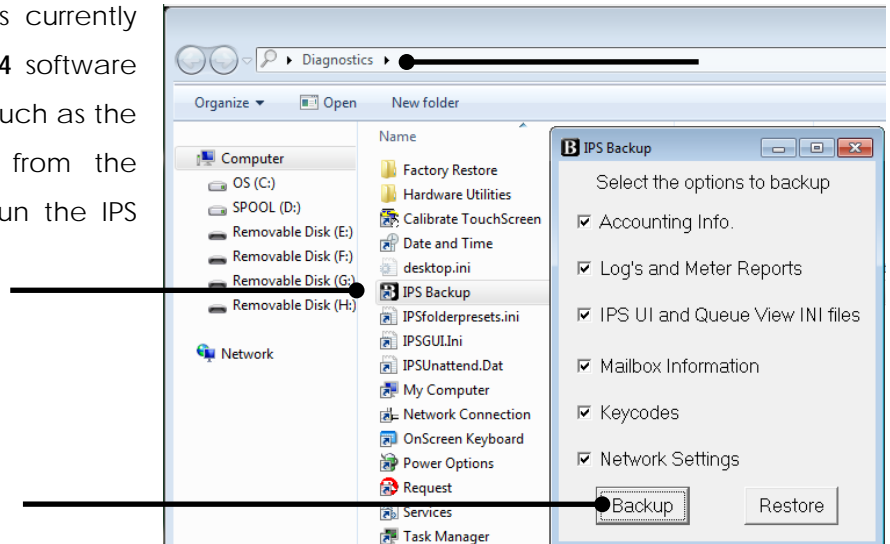
**Note: For the new 7.5 version software, a Folder keycode will be needed. Please Contact KIP KC3 with the KIP Printer serial number and Folder serial number.**

# KIP Upgrading to Windows 7



## Upgrading Version 7.3/7.4 to Version 7.5 with Windows 7

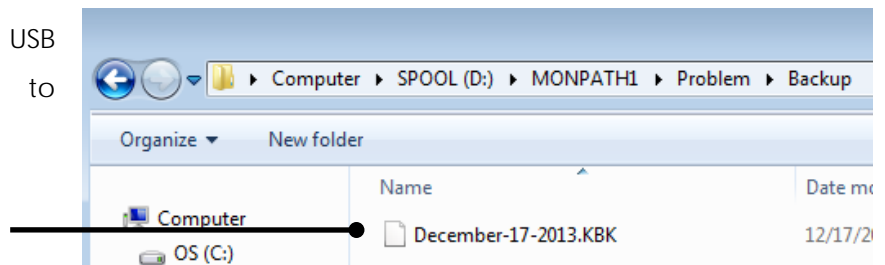
If the KIP printer being upgraded is currently running any version of the 7.3 or 7.4 software simply close all running applications such as the GUI and unattend software and from the diagnostics folder on the desktop run the IPS Backup Utility.



This will create a backup file in the following location that can be imported once you upgrade to WSe7.

D:\Monpath1\Problem\Backup\ \*Filename will be the current date.kbk

\*Be sure to copy this file to a USB drive and remove it prior to upgrading the system.

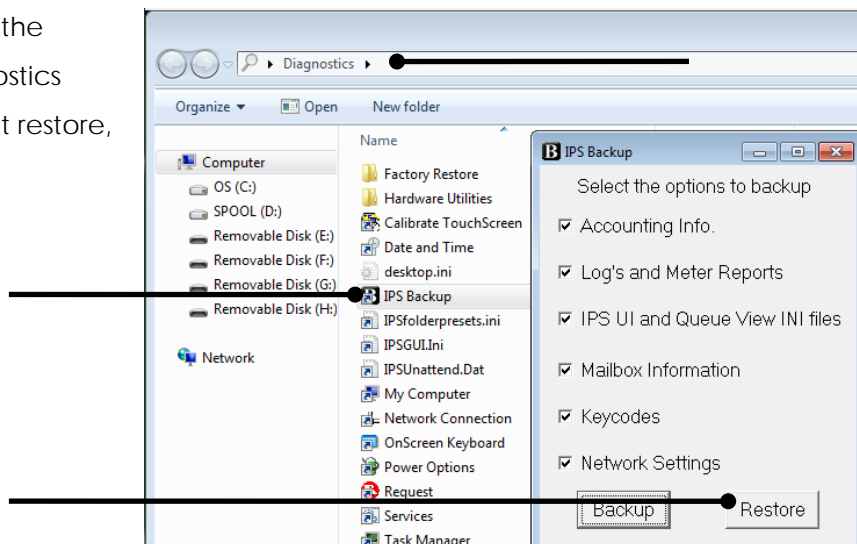


**Note:** the Advanced Color Keycode is not backed up in this process and will need to be backed up as explained on Page 8 or Page 14.

# KIP Upgrading to Windows 7

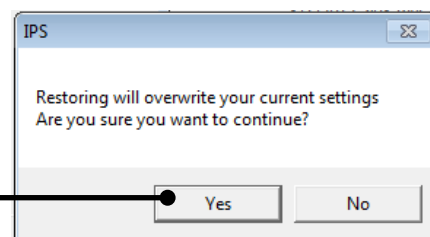


Once the upgrade is complete, select the same IPS Backup Utility from the diagnostics folder on the printer desktop and select restore,

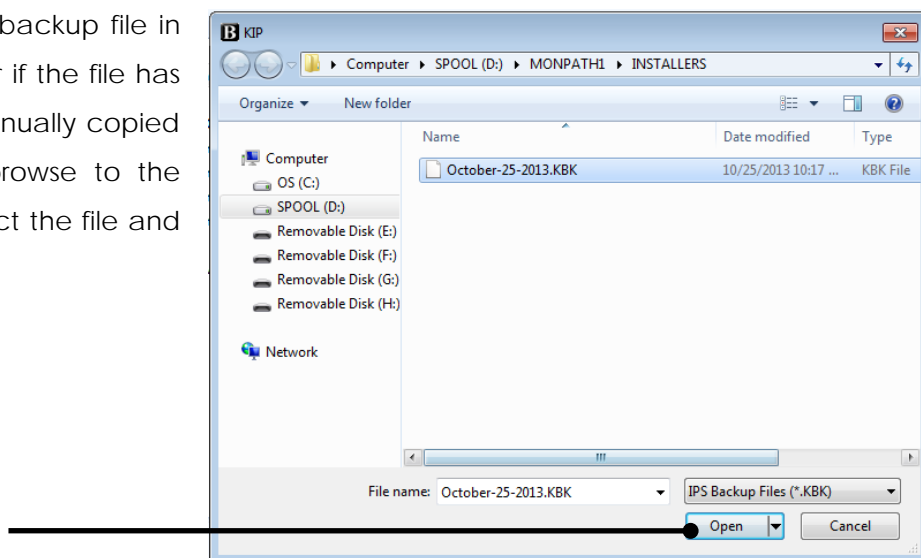


The following message will be displayed.

Select the Yes button



This will automatically look for a backup file in the C:\monpath1\Installers folder if the file has not been put in this location (manually copied here or pushed via IPS Print) browse to the location of the backup and Select the file and then select Open.



**Note:** The DNS suffix information will not be backed up. Please make sure to note this information before the upgrade. Refer to page 6, **Network Configuration** for more info.

No part of this publication may be copied, reproduced or distributed in any form without express written permission from KIP. © 2014 KIP.

# KIP Upgrading to Windows 7



**Dealer Logo Information** – Backup and import the following folder to keep the Dealer info and logo for the ? page.

C:\Program Files\IPS\IPSGUI\Dealer

**Advanced Color Keycode** – Obtain the target sheet using the [kipkeycodes.com](http://kipkeycodes.com) website for use after the upgrade or make a note of the code to manually enter as seen in the screenshot below. Click color scan to file or color copy, hit config in the lower left and select the keycode tab.

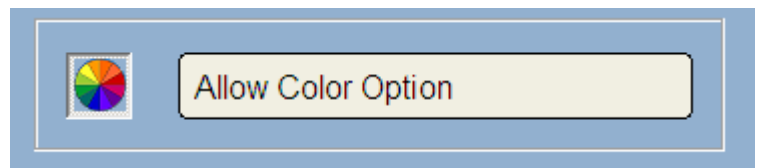
**Note:** there is a file that can be saved that has the color code in it that can be replaced without having to enter the color code again. This file is called Col32.key and is located here:

C:\Documents and Settings\All Users\Application Data\KIP\7.2\KIP Color

*After upgrade copy to:*

C:\ProgramData\IPS\7.5SP1\ipscolor

If any the color buttons do not seem to function (7100) go to the "?" button\Service and on the last page select the allow color option button so it shows as seen below.





U.S.A. ■ Phone: (800) 252-6793 ■ Email: [info@kipamerica.com](mailto:info@kipamerica.com) ■ Website: [www.kip.com](http://www.kip.com)

CANADA ■ Phone: (800) 653-7552 ■ Email: [info@kipcanada.com](mailto:info@kipcanada.com) ■ Website: [www.kip.com](http://www.kip.com)

KIP is a registered trademark of the KIP Group. All other product names mentioned herein are trademarks of their respective companies. All product features and specifications are subject to change without notice. Complete product specifications are available upon request.