

# SYSTEM SOFTWARE **K** 3.1



## PRINT MANAGEMENT SOLUTIONS

# KIP Systems Diagram



## NETWORK

### WINDOWS WORKSTATIONS



#### STANDARD FEATURES:

- KIP Windows Driver
- KIP ImagePro - Print (Application)
- KIP PrintPro.Net (Web Browser)
- KIP Printer Status (Application)
- KIP Media Manager
- KIPFold Control with Automatic Title Block Recognition
- KIP Hotfolder & LPR Spooling

#### OPTIONS - Per Printer:

- PDF/PS Printing
- KIP Accounting, Cost Center & Access Control

### MAC WORKSTATIONS



#### STANDARD FEATURES:

- KIP PrintPro.Net (Web Browser)
- PostScript Printer Description File
- KIP Hotfolder Support
- LPR Spooling

### LINUX WORKSTATIONS



#### STANDARD FEATURES:

- KIP PrintPro.Net (Web Browser)
- KIP Hotfolder Support
- LPR Spooling

## KIP DIGITAL DATA SECURITY

#### STANDARD FEATURES:

- Image Overwrite
- Removable Hard Disk Drive Accessory Kit
- Standard Security Updates
- KIP Secure Print
- KIP Accounting Center Integration





## A NEW GENERATION OF WIDE FORMAT FUNCTIONALITY

### Table of Contents

### Print Management Solutions

- KIP Systems Diagram.....2

#### Multi-Touch Touchscreen

- KIP Multi-Touch Solutions.....4
- KIP Cloud Connect .....6

#### Print Submission

- KIP ImagePro - Print.....8
- KIP PrintPro.Net .....10
- KIP Smart Print & Scan .....12

#### Print Drivers

- KIP Windows® Driver .....14

#### Accounting / Administrative

- KIP Accounting Center.....16
- KIP Tiers .....18
- KIP Cost Center .....19
- KIP Role Based Access Control .....20
- KIP Card Reader Systems.....22
- KIP Data Security Features .....24
- KIP Printer Status / SNMP .....26

#### KIP 720 / KIP 2300 Stand Alone Scan Station

- KIP ImagePro – Scan & Copy .....28

#### Print Management Solutions

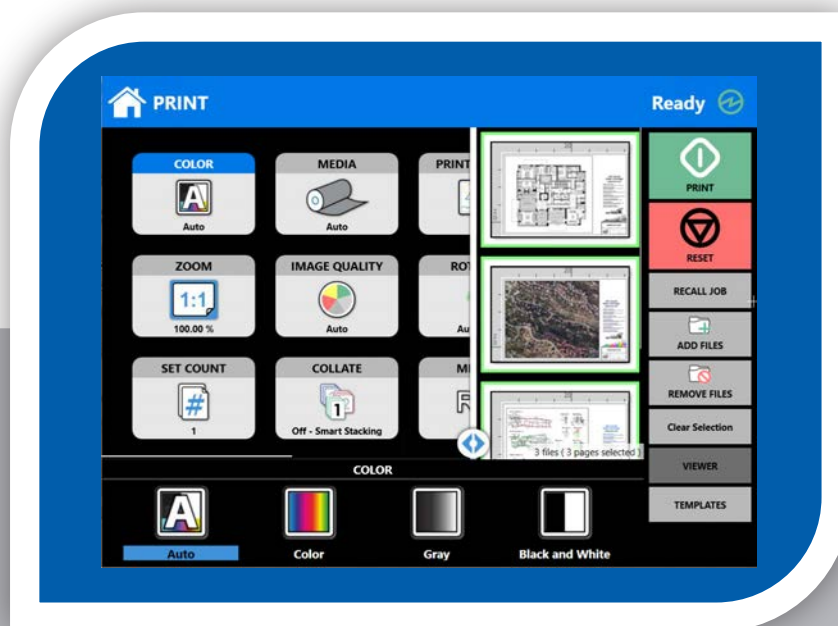
- KIP Custom Media Manager.....30

## Multi-Touch Touchscreen

# KIP Multi-Touch Solutions

All system functions for KIP systems are performed through an integrated, multi-touch tablet-like color display to copy, print and scan both color and b&w documents. Walk-up operator conveniences include auto-start, access to unlimited presets, easy to understand touchscreen user guides and real-time on-screen previews. Multi-touch controls provide users with full color intuitive tablet-like controls with swipe, pinch, spread, rotate and tap.

Vivid image previews and on-screen controls allow for saving and printing the Area of Interest. Multi-touch features allow operators to identify documents, adjust image quality and replace documents in collated sets. The integrated color touch display provides a powerful combination of control plus convenience; you don't have to leave the printer to perform important tasks.



Zoom, Rotate, and Pan the Image Preview  
Using Multi-Touch Controls





Walk-Up Print, Copy and Scan

## KIP Multi-Touch Touchscreen Features



Vivid Color Multi-Touch Display | Intuitive Feature Selection for Easy Operation | Fully Articulating Viewing Angle | Centralized Access to all System Features | Print, Copy and Scan in B&W and Full Color | Super View with Swipe, Pinch, Spread and Rotate | Print Directly from Removable Media, the Cloud and Local Mailboxes | One Touch Access to System Features in 22 Languages | Full Color Guides | Integrated Print Previews | On-screen Set Copy Editor | Concurrent Print and Scan-to-File | Manage Print and History Queue | KIP Accounting Center Integration | KIP Cost Center Integration



### Multi-Touch Features

Super View Image Controls for Print, Copy and Scan | Pinch and Spread to Zoom | Touch to Rotate | Copy, Scan, Email or Print Specific Area of Interest | Selectable User Guides | Automatic Display of User Guide when Replacing Toner/Paper | View Job Queue | Reprint Jobs from History | Selectable System Presets | View System Status from any Screen | Select Color Scheme



### Copy Functions

Concurrent Copy and Print | Copy Single or Collated Sets | Sort and Replace Pages in Collated Set | Copy Area of Interest | Scan to File while Copying | Scale to Factor or Select Page Size Preset | Select Fold Pattern or Auto-Fold Based on Page Size | Automatic Deskew | Stamp Documents with Text or Graphic | Interrupt Jobs for Urgent Tasks | Unlimited System Presets for Stamps and Folding | Unlimited User Templates for Document Types and Job Settings | Select Front or Rear Stacking | Copy Details for KIP Job Accounting and Data Tracking | Color Copy to KIP Color Series Systems



### Print Functions

Print from Local Mailbox/USB/Network Drive | Print from KIP Cloud Connect | WYSIWYP File Preview | Collated Set Printing | Select Fold Pattern or Auto-Fold Based on Page Size | Scale to Factor or Select Page Size Preset | Auto-Print from Email | Print Details for KIP Job Accounting and Data Tracking | Color Print to KIP Color Series Systems



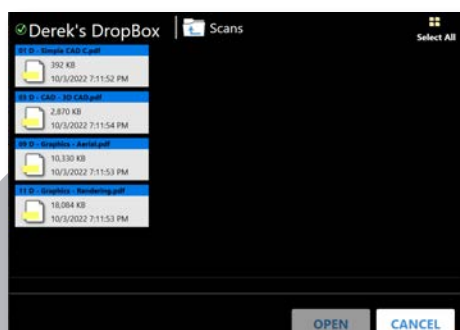
### Scan Functions

Scan to File in B&W or Color | Scan to Local Mailbox/USB/Network Drive/SMB/FTP | Scan to KIP Cloud Connect | Scan to Email | WYSIWYP File Preview | Scan to Multi-Page TIF, PDF or PDF-A | Scan to B/W TIF, Cals Group 4, PDF or PDF-A | Scan to Color TIF, JPEG, PDF or PDF-A | Select 200 – 600 dpi | Select Rotation | Adjust Scanner Speed for Delicate Originals | Scan Details for KIP Job Accounting and Data Tracking

## Multi-Touch Touchscreen

# KIP Cloud Connect

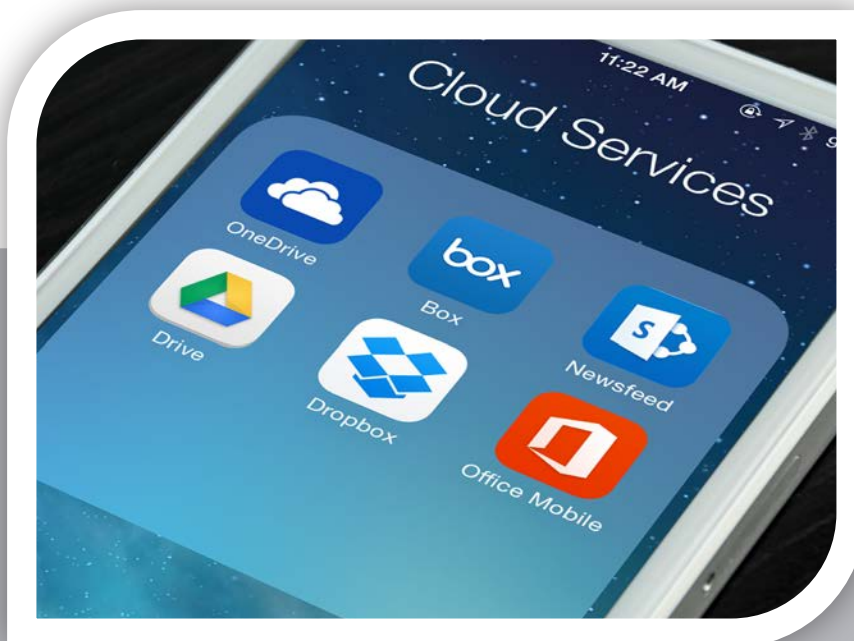
Sharing online content via popular Cloud Services has become a critical collaboration tool. Increased network security and file size restrictions limit the ability of users to Email full size color and b&w technical documents. KIP systems include KIP Cloud Connect – the ability to scan to and print from the cloud directly at the multi-touch display. Whether the Cloud Service is used for personal documents or for project collaboration, KIP systems provide quick access to print color or b&w data. Scan a document to the cloud at the touchscreen and instantly access it at your desktop or mobile device.

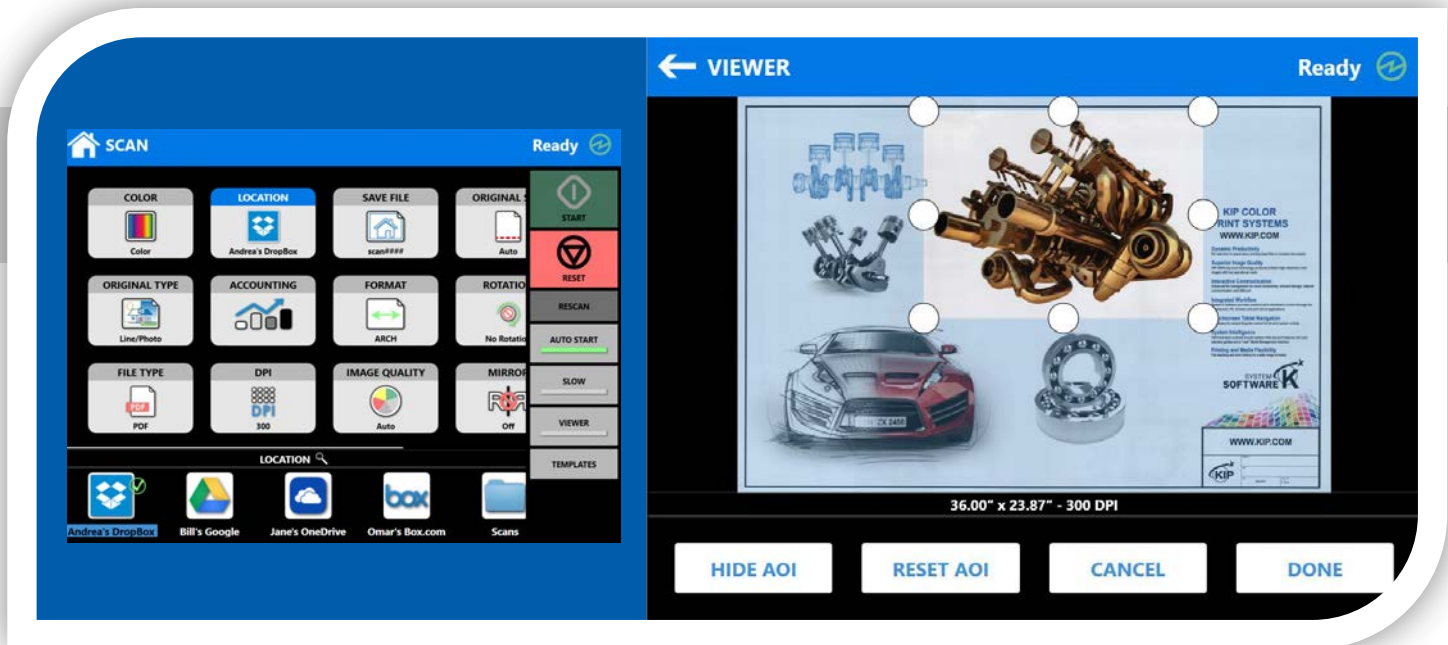


File to Print



Multiple Cloud Locations





Scan to Cloud

Area of Interest to Cloud

## KIP Cloud Connect Key Features



Select from Multiple Cloud Services | Print from KIP Cloud Connect | Scan to KIP Cloud Connect | Unlimited Cloud Connections | Single or Multiple Files | Choose Files from Multiple Cloud Services for Single Print Job | Easy Configuration from Multi-Touch Screen | Collated Sets Printing



### Cloud Service Choices

Microsoft® OneDrive | Microsoft® Office SharePoint | Google Drive | Box.com | Dropbox



### Multi-Touch Print from Cloud

Print to B&W KIP Printers | Print to KIP Color Printers | Print Area of Interest | Build Collated Sets from Multiple Cloud Services



### Multi-Touch Scan to Cloud

Scan to Individual Cloud Location | Scan to Project Cloud Location | Scan Single or Multi-Page Files to Cloud | Scan Color or B&W Documents | Scan Area of Interest



### Image Preview

Multi-Touch Controls: Zoom, Rotate and Pan | Zoom to Area of Interest



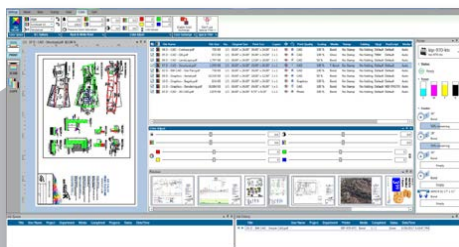
## Print Submission

# KIP ImagePro - Print

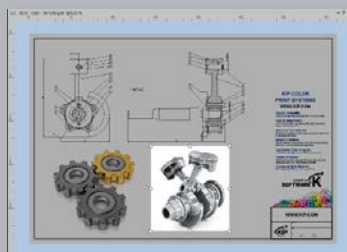
KIP ImagePro is a powerful suite of software that improves efficiency with controlled workflow automation in high demand environments while producing faster turn-around times. KIP ImagePro document submission tools are designed to enhance color management capabilities. Advance your workflows in an application for printing a range of color or black and white wide format documents including technical images, posters and banners to multiple KIP systems.

The brilliant multi-tasking flexibility allows production operators to capture efficiency, improving customer service with faster production fulfillment. A fully customizable interface enhances system tools by placing them forward for ease of access, navigation and control. It is not necessary to be a color expert to adjust and print color with KIP ImagePro. Simple presets for both graphic and technical documents provide easy operation for smarter color communication. Sophisticated project details can be highlighted with Advanced Area of Interest selections. KIP Smart Stacking simplifies the accurate collation of mixed sets of color and black and white prints. Intelligent Job Validation provides notification for missing fonts, correct page size and comprehensive multi-page control when printing PDF files. The Roll Preview interactively displays documents on the chosen roll width for nesting, paneling & two-up printing.

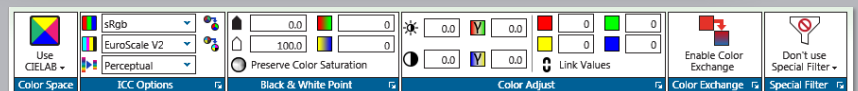
KIP Image Pro - Print has two interface modes: Standard, for features most commonly used and Expanded, additional tools designed for production experts. Using either mode, the ease to which KIP ImagePro integrates into print workflows is simply brilliant.



Powerful Job Creation, HD Viewer & System Monitoring



Area of Interest (AOI)



Professional Color Management



## KIP ImagePro - Print Key Features



Brilliant Multi-Tasking | KIP Smart Stacking | Advanced Area of Interest Printing | Intelligent PDF Job Validation | High Definition Viewing | Customizable Interface for Personalized View & Tools | Easy Deployment

### KIP ImagePro: Features



**Brilliant Multi-Tasking** Within the productive simplicity of one application - create multiple jobs | Adjust Colors | Review Changes | View Device Status | Color\*, B&W and Grayscale Printing | Automatic Color\*\*, Gray or B&W File Detection | Load and Save System Presets | KIP Secure Print | KIP Accounting Center Integration | KIP Cost Center Integration | KIP Smart Stacking

**High Definition Viewing** High resolution image pre-flight viewer for “What You See Is What You Print” to include review of color adjustments and preset creations | Color or B&W | View applied filters to include color adjustments, stamps, PS & GL settings | AOI Selection - Scale, Position, Print | Position Image on the Page | Page ruler | View Scale to Pixels or Fit to Screen | Image Navigator



**Advanced Area of Interest Printing** Select Size | Position | Print only the “Area of Interest” to enhance communication of sophisticated or important job details



**Customizable Interface** Access your preferred productivity features with ease using “Pop Out” tools and panels, regardless of Standard or Expanded mode.



**Job Matrix** Individual Set and Copy Count | Change File Order with Cut/Paste | Apply Presets to Selected Files or Entire Job | Advanced Multi-Page PDF Support | Drag-n-Drop Files or Folders from Cloud, Local, Network Drives and KIP Mailboxes | Banner Page for Set or Job | Select Print Stacking Location | Submit Job Paused for Hold & Release | KIP Secure Print with PIN or User Identification | Accounting selections to include Projects and Departments | Stamping | Print Quality Presets for Color, Grayscale and B&W Documents | Page Count | Page Size | Scale to Page | Scale to Page Width or Length | Scale to Maximum | Margin Controls | PDF and Postscript® Quality Preset | Fold Preset | Text and Graphic Stamp in Color or B&W | HPGL Pen Preset | Rotate/Mirror/Invert | Adjust Job Matrix Column Sizes and Position | Customize Matrix Columns for Content



**Preflight & Thumbnail Preview** Vertical or Horizontal Ribbon Style for Quick Preview | Preview in Color or B&W | Preview Orientation & Print Direction | Select Image for instant access in Matrix | Roll Preview | Preflight Nesting & Two-Up



**Folding** Automatic Title Block Detection | Automatic Fold Configuration | Customize Fold Presets



**Email Notifications** Enable - Job Notifications | Replenishment of Consumables | Receive Printer Status | Meter Notifications



**System Presets & Media Manager** Pre Defined & Fully Customizable | Preview Preset | PS & PDF Settings | HPGL Variables | Advanced Scaling | Stamps with Images & Text | Custom Page Sizes | Load Custom Media Profiles | Add new media and customize names



**Other Features** Auto Connect to KIP Printers | Auto Update using “Click Once” | Customize User Interface with “Pop Out” Tools and Panels | Auto-Hide, Float or Dock Panels | Enable PS/PDF, HPGL Pens, Print Quality Presets | View changes as they occur | Add Custom Page Sizes | Unlimited User Templates | Displayed Units in Inch or Metric | Multiple Languages

### KIP ImagePro: Expanded Features



**Job Matrix** Select Color Space | ICC Options | Black / White Point | Color Adjustments | Color Exchange | Sharpen & Smooth Tools | Nesting with 2-UP | Paneling | Technical Label

**Job Validation** Notification for - Missing PDF fonts | Correct Page Size | Missing Media Sizes | Missing Job Media Type | Comprehensive Multi-page Individual File Selection & Control



**Job Information** Job analyzation for page size counts, color to B&W along with projected print times.

**Job Monitoring and Device Status** View Job Processing | Printing Status | Manage the Job to include Pause, Reorder or Delete | Recall, Edit and Reprint Previous Jobs

\*with KIP Color Printers

\*\*with KIP Color Printers, configured for this function

## Print Submission


# KIP PrintPro.Net

KIP PrintPro.Net provides KIP color and b&w systems with the most feature rich browser based print submission and system management application on the market.

**Print Submission** - Without the need to install any application software, operators can perform print submission, access their KIP printer mailbox and manage their print jobs. Using a web browser, operators can configure single and multi-page files with individual scaling preferences, stamps, folding presets, color management controls and print stacking location. Start new print jobs quickly by accessing User Presets that include operator preferences, job settings and the most common system presets. PrintPro.Net supports building print jobs using color and b&w technical documents from standard wide format digital files including Postscript, PDF, TIFF, JPG, Calcomp, DWF and HPGL 1/2/RTL (and more).


**System Management** - Based on defined user access, administrators can use virtually any web browser to manage the print queue and see a full overview of the system status. Administrators have complete access to printer preferences, network connectivity settings, system presets, daily sleep timers, history queue size, exit tray defaults and auto-rotation settings.

Feeder



36" (Bond)

75%



24" (Bond)

50%

Counters

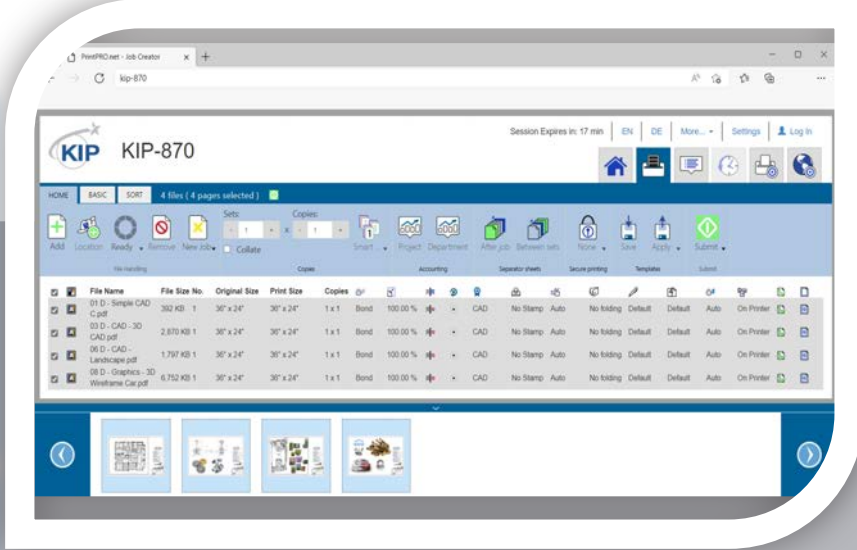
Meter A	8823 1 Sq. Feet
Meter B	0
Total Run	1033 1 Linear Meters
B&W Scan	No Content
Color Scan	No Content
Scan Count	No Content

Notifications


**Printing, Loading**

In Process: none

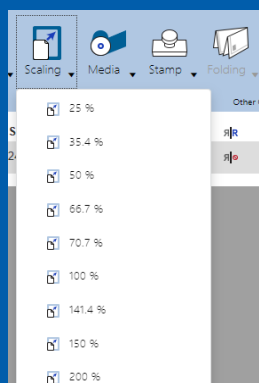
In Queue: 0



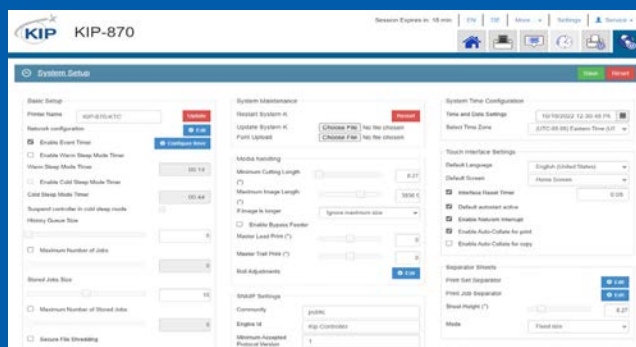
KIP PrintPro.Net Job Submission



KIP PrintPro.Net Settings & Status



KIP PrintPro.Net Scaling



Web-Based, Browser Independent

## KIP PrintPro.Net Key Features



Identical Features Across a Variety of Web Browsers | Multiple Copies or Collated Sets | WYSIWYP Image Preview | Individual File Settings for Job Matrix Templates | Multi-Page Support | Color Adjustments and Filter Selections | Email Notification | Document Folding and Stamping | HPGL Pen Preset Selection | Transfer Files from KIP Printer Mailbox | Customize System and Folder Presets | Manage Print Queue and User Settings | KIP Secure Print | KIP Accounting Center Integration | KIP Cost Center Integration



### Web Browser Features

Supports Popular Browsers | Identical Features Regardless of Browser | New Features Available Instantly After System Updates | Use Mobile Phones and Tablets to Manage Settings and Print Queue



### Job Build Matrix

Matrix Printing with Individual Set and Copy Count | Change File Order with Cut/Paste or Drag-n-Drop | Apply System Presets to Selected Files or Entire Job | Multi-Page PDF Support | Select Files or Folders from Cloud, Local, Network Drives and KIP Mailboxes | Banner Page for Set or Job | Submit Job Paused for Hold and Release | KIP Secure Print with PIN or User Identification



### Individual File Settings

Print Quality Presets for Color, Grayscale and B&W Documents | Copy Count, Scaling and Page Size | PDF and Postscript® Quality Preset | Fold Preset | Simple and Advanced Color Management Preset Including ICC Profiles | Manage Image Quality with B&W Point, Background Removal and Sharpening Tools | Select Print Stacking Location | Text and Graphic Stamp in Color or B&W | HPGL Pen Preset | Rotate/Mirror/Invert | Save Unlimited User Templates (All Features Listed Above)



### Image Preview

Preview in Color or B&W | Fast Thumbnail Preview | Rotate Image for Best Fit | Preview Print Direction



### E-Notifications

Email Notifications for: Job Received | Job Complete | Replenish Toner or Paper | Automated Meter Reads



### Document Folding

Automatic Title Block Detection | Automatic Fold by Page Size | Customize Fold Presets



### Job Monitoring and Device Status

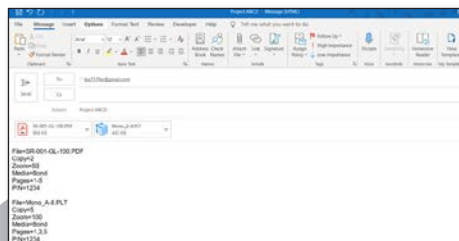
Dependable Device Feedback | View Processing and Printing Status | Manage the Job to Pause, Reorder or Delete | Recall, Edit and Reprint Previous Jobs

## Print Submission

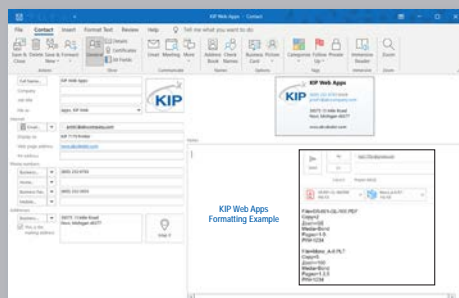
# KIP Smart Print & Scan

KIP Smart Print & Smart Scan are flexible approaches to delivering print and scan services – one that responds to mobile business needs by providing a driverless cloud solution. Whether you're using iPhone, Android, Windows, PC, Mac or laptop; KIP Smart Print simplifies convenience printing using your favorite Email provider. Scan to Email an entire document or just a small area using KIP Smart Scan.

Configure any KIP system to receive Emails and their attachments at predetermined intervals. The attached documents are printed using keywords for copy count, scaling and KIP Secure PIN. Alternatively, archive the documents and access them from the multi-touch screen, KIP ImagePro or PrintPro.Net. KIP Smart Scan & Smart Print let operators make a “copy” from one KIP to another anywhere in the world with only an Email address.



Optional Keywords for Expanded Flexibility



Easy to Use Email Printing



Use any Phone, Tablet, Laptop or PC





## KIP Smart Print & Scan Key Features



Use any Smart Phone, Tablet, Laptop or PC | No Need to Install Drivers or Software Applications | Submit Print Ready Files via Email Attachments | Works with any Web Enabled KIP Printer | Print B&W or Color Documents | Scan Full Size Documents | Choose an Area of Interest | Remote Scan Auto-Archived or Printed by KIP Printer | Access Archived Documents via KIP Apps | Optional Keywords Provide Expanded Flexibility



### KIP Smart Print

Works with any Web Enabled KIP Print System | Print Color or B&W Documents | Secure PIN From Smart Print via Email | SSL for Encrypted Connection | POP3 Or IMAP Mail Compatible | Configurable Email Monitor | Archive or Print Incoming Email | Attach Multiple Files To Create Sets | Keywords for Filename, Copy Count, Media Type, Scaling, KIP Secure PIN, Specify Pages



### KIP Smart Scan

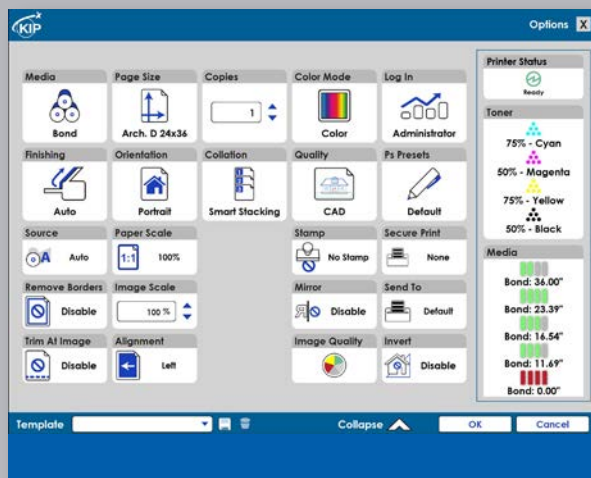
Works with any Web Enabled KIP Print System | Scan to Email In Color or B&W | Scan Area of Interest to Email | Cloud Scan to Remote KIP Systems via Web | Remote Scan Auto-Printed | Remote Scan Auto-Archived

## Print Drivers

# KIP Windows® Driver

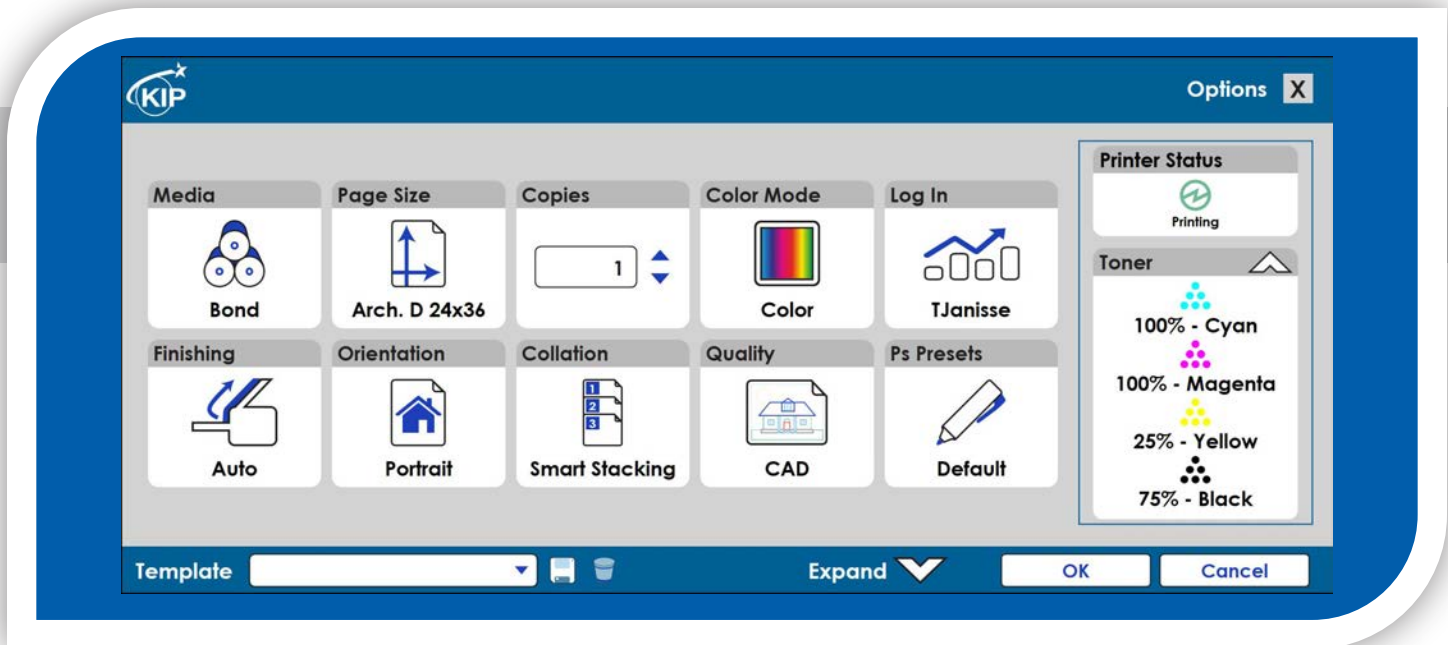
The KIP Windows® Driver is Microsoft® WHQL certified, meeting exact standards of reliability and quality. The functional and intuitive graphic user interface and expanded features provides the user with a wide range of standard and special functions when printing from Windows® based applications.

The KIP Windows® Driver can be used with the entire range of KIP Printers from any Windows® based application for both color and b&w print applications.



Windows® Driver Expanded View





Windows® Driver Collapsed View

## KIP Windows® Driver Key Features



Fast Spooling for Multiple Copies or Sets | Displays Real-Time System Status | Information Set Collation | Provides Current Media Information | Media Selection | Secure PIN Printing | Send Job on Hold | Save Templates | Brightness Adjustment | Unlimited Image Quality Presets | Pen Preset Selection | KIP Accounting Center Integration | KIP Cost Center Integration



### Driver Information

Single Source Driver for 64 and 32 Bit Operating System Compatibility | KIP GL Format | KIP Script Format Windows® 8, Windows® 10 & Windows® 11



### Media Information

Paper Size (Standard and Custom Sizes) | Standard Media Types | Custom Media Types | Orientation | Media Source



### Print and Output

Scaling (When Not Available In Application) | Paper Scaling | Collation/Page Order | Mirroring | Inverting



### Color Selections

Simple Color Preset Selection | Simple Color Adjustments | Advance Color Quality Selection | Advance Color Filter Selection | Advance Color, Black Trapping On/Off | Advance Color, Color Trapping On/Off



### Special Features

Apply Stamps | Set Separator | Job Separator | Folding Control (when folder is present) | Trim at Image | Alignment



### KIP Accounting

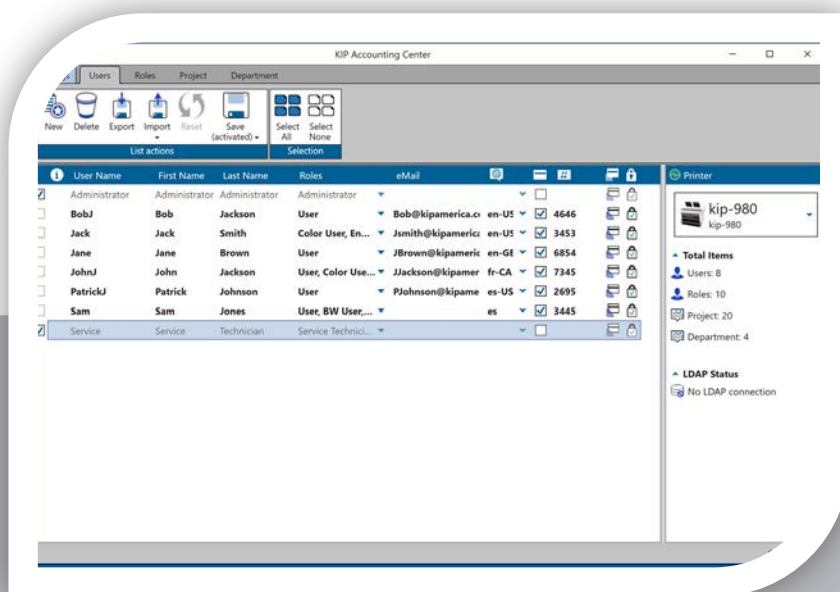
KIP Cost Center Integration | KIP Accounting Center Application

## Accounting / Administrative

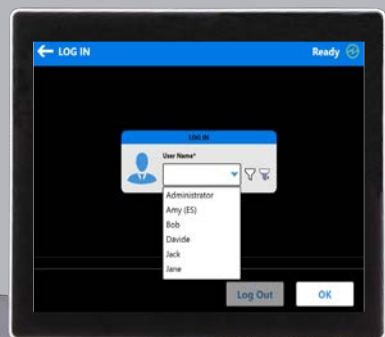
# KIP Accounting Center

**KIP Tiers | KIP Cost Center | KIP Role Based Access Control | KIP Card Reader Systems | KIP Data Security Features**

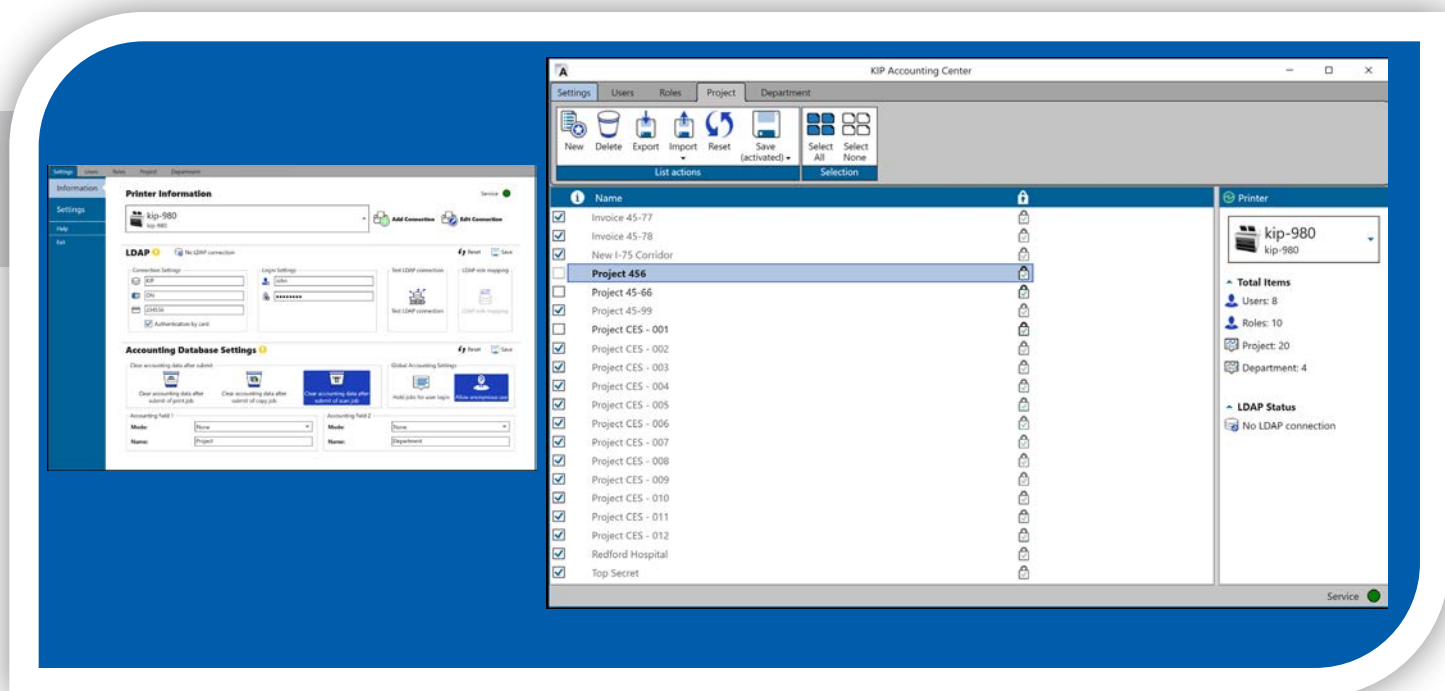
The KIP Accounting Center consolidates control of user account data and printing rules for all Copy, Print and Scan activities for KIP color and b&w systems. When activated, the KIP Touchscreen systems, printing applications and print drivers continuously retrieve accounting and user data from the System K controller. Utilizing rules based printing and account data, administrators and IT managers can control print costs or turn printing into billing revenue. The account data is held on the KIP Printer system for use by the KIP Cost Center software application. KIP Accounting Center includes the KIP Tiers app with usage reporting, by color and black and white coverage percentage displayed on the KIP Smart Touchscreen.



Integrated with all KIP Applications







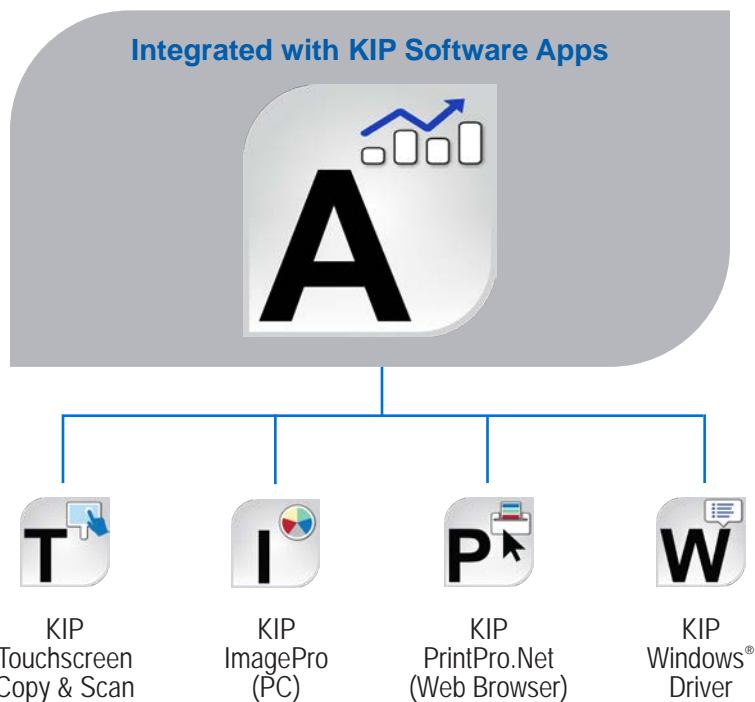
KIP Accounting Center Settings

Adding Project Numbers

## KIP Accounting Center Features



Username and Two Customizable Fields | Import for User Data Using LDAP | Clear Fields After Each Job Submission | ASCII Import/Export | Easily Update User, Project and Department Data | Automated KIP System Update via Scripting | Password Protect any or all Data Entries | No Special Data Servers Required





## Accounting / Administrative

# KIP Tiers

### Touchscreen

Immediate verification of the meter read and image coverage by percentage is displayed on the KIP Smart Touchscreen.

### Email

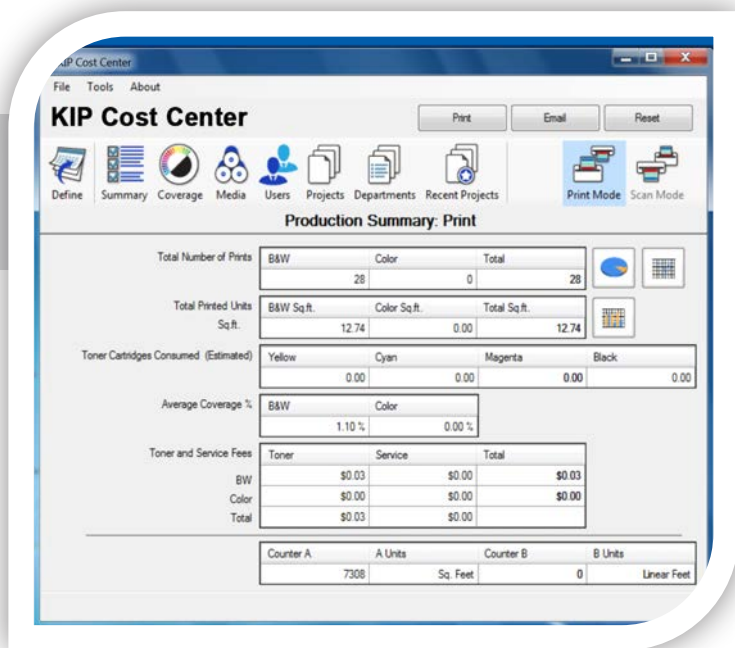
Automatically sends monthly usage and meter read reports by email.

### Print

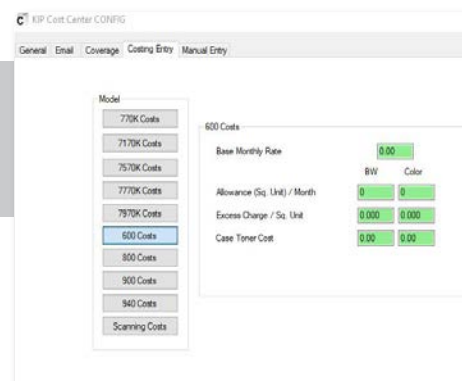
Conveniently print the meter read coverage report on the KIP system at the touchscreen



KIP Tiers	
<b>BW Line</b>	
4,628.50 sq ft	0% - 10%
<b>BW High Density</b>	
2,789.31 sq ft	10% - 100%
<b>Color Line</b>	
62,854.10 sq ft	0% - 10%
<b>Color Low Density</b>	
57,967.73 sq ft	10% - 50%
<b>Color High Density</b>	
27,728.40 sq ft	50% - 400%
<div>Complete Report </div> <div></div>	



Print Summary Reports



Cost Entry for Printing and Scanning

# KIP Cost Center



The KIP Cost Center application retrieves extensive log files directly from KIP Systems and automatically generates production reports for user, project and department level accounting data. Print or Email visually attractive graphical reports for color and B&W print and scan production directly from the application. Generate reports anytime and anywhere when KIP Systems are configured to automatically Email tracking data at pre-determined intervals.

## KIP Cost Center Features



Integrated with all KIP Apps and Touchscreen Systems | Track Color and B&W Copy, Scan and Print | Easy to Understand Graphical Reports | Average Toner Coverage by Percent | Daily Print and Scan Volume for Color and B&W | Reports by Date Range | Print Reports on Demand | Receive Reports by Email | User, Project and Department Categories | Access the Details of the Last 100 Jobs | KIP Toner Costs by Color and B&W | KIP Maintenance Costs | KIP Scanner Costs by Color and B&W



### Report Categories

Print Coverage Tracked in 10 Categories | Reports Available in Data and Graphic Format | Print Reports on Demand | Receive Reports via Email | User Report – Graph for Top 5 | Project Number Report – Graph for Top 5 | Department Report – Graph for Top 5 | Search Function



### Reports by Date Range

Print Volume – Total Number and Total Sq. Ft. / Sq. M. | Scan Volume – Total Number and Total Sq. Ft. / Sq. M. | Toner Costs | Maintenance Costs | Total Cost of Operation | Estimated Toner Cartridges Used (CMYK) | Average Toner Coverage % by Color and B&W Usage



### Graphic Reports

Daily Print and Scan Volume Line Chart | Color vs. B&W Scanning Bar or Pie Chart | Average % Coverage Report | Toner and Service Fees Generated | Total Number of Prints by Media Type | Total Sq. Ft. / Sq. M. by Media Type



### Job History

Last 100 Jobs Information | Detailed Toner Coverage Per Page | Print Volume – Total Number of Prints | Print Volume – Total Sq. Ft. / Sq. M. | Maintenance Costs | Toner Costs by Color and B&W

## Accounting / Administrative

# KIP Role Based Access Control

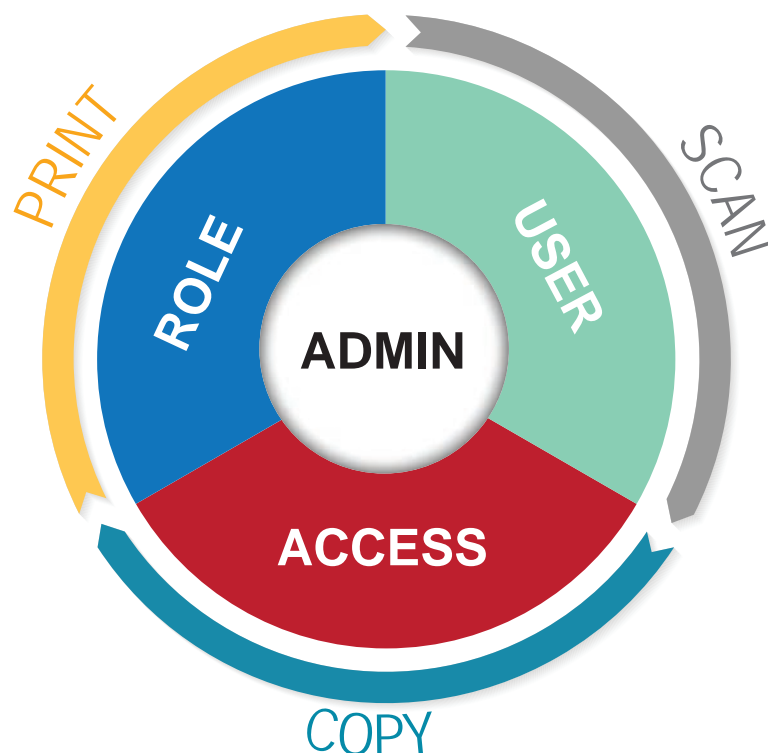
### The Ultimate Print System Management Control

KIP System K Role Based Access Controls enable a new level of KIP print system management using rule based role assignment for advanced control. RBAC provides a smarter way to apply rules for specific user accessibility to copy, print and scan features assigned by the system administrator.

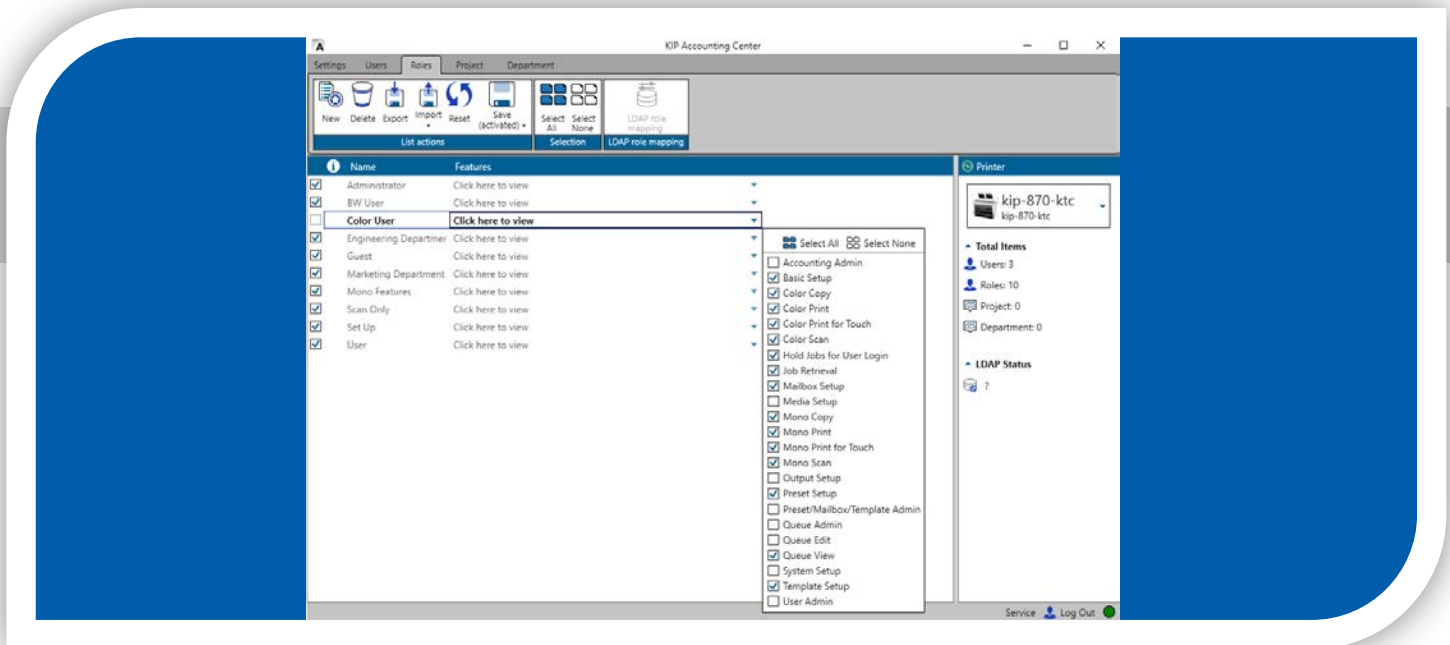
1. Easily create user accountability and conveniently communicate printing environment modifications.
2. Collect powerful data to effectively analyze print system behaviors to optimize rules for streamlining print environment efficiency and security.
3. Apply printing rules to create a smarter printing environment. Customize conditions to conserve energy and supplies (Example: set restrictions on color printing for specific users).

KIP Accounting Center Role Based Access Control is integrated within the KIP Smart Multi-Touchscreen, KIP ImagePro and KIP PrintPro.Net. RBAC resides within the optional KIP Accounting Center software.

KIP RBAC controls device usage for individual personnel, modifies system behavior, enforces security, optimizes efficiency and reduces cost.







KIP Role Based Access Control

## KIP Role Based Access Control Features



Create a smarter printing environment | Easily assign Roles for device functionality to individual users | Collect powerful data to effectively analyze print system usage | Optimize rules for streamlining print environment efficiency | Intelligent presets for intuitive productivity | Once Roles are created they can be exported to other System K printers | Effective management of company print system assets | Reduce printing cost | Enhance document security by limiting device access through convenient authorization policies. Ensure only assigned users can access secure devices by requiring authorization through optional smart cards, or alphanumeric personal pin identification codes or numbers (PIC, PIN)



### Accounting Center with RBAC

KIP Accounting Center sets a new standard for powerful automated control of user account data, cost reporting for all copy, print and scan activities with role based printing rules | KIP Accounting Center includes KIP Cost Center and KIP Role Based Access Control | KIP Accounting is a comprehensive solution to turn printing into billing revenue | KIP Accounting generates professional user, project and department reports | KIP Cost Center tracks and reports the toner and service cost for color and b&w copies, prints and scans | KIP Role Based Access Control easily implements device usage rules for individual personnel, modifies system behavior, enforces security, optimizes efficiency and reduces cost | Unlimited site license | Developed by KIP | Unmatched performance and value

## Accounting / Administrative

# KIP Card Reader Systems

### Contactless Card Reader and DoD Compliant Common Access Card (CAC)

KIP offers customers two solutions to secure the KIP Systems using contactless card readers.

The KIP Contactless Card system integration enables control of walk-up copy, print and scan functions for work group systems with standard FeliCa and HID Cards. With the touch of a card, unlock the touchscreen and recall User Preferences automatically. Track usage information for copy, print and scan functions based on Card ID. Walk away with your card and the system automatically resets for the next user.

The KIP Common Access Card Solution is a DoD authorized solution that uses a contactless card and in-line network appliance to access network resources. KIP's CAC Solution protects a network by requiring users to authenticate using a smartcard (CAC/PIV) and personal identification number (PIN). Without both the card and PIN, the KIP CAC does not permit the user to transmit scan data from the KIP device to network resources.



Contactless Card System



Common Access Card Solution

## KIP Contactless Card System Integration Key Features



Standard FeliCa Cards | Various Contactless Cards | User Authentication Linked to Card | Load User and System Presets | Load User Cloud and SMB Credentials | Track Usage by Card/NFC Token | Release User Jobs at Touchscreen | KIP Accounting Center Integration | KIP Cost Center Integration

### Connectivity

USB to KIP System K Controller

### Administration

KIP Accounting Center Application for User Data | KIP PrintPro.Net for Feature Settings

### Supported Standards

Japan: No AC-12005 | USA: FCC ID AK8RCS380 | Canada: IC Certification No: 409B-RCS380 | Europe: CE R&TTE (1999/5/EC)

## KIP Common Access Card Solution Key Features



Enables/Disables Network Access | Designed for Easy Installation | Meets Homeland Security Presidential Directive (HSPD-12) | Local and Network User Authentication Using LDAP or Active Directory | Netgard MFD In-Line Network Appliance

### Connectivity

2x 10/100 Ethernet | Dual IPv4 and IPv6 Stacks

### Administration/Management

Local: Manager Remote | Web: Browser via SSL

### Supported Standards

ISO/IEC 7816 and 7810 | FIPS 140-2 and 201 | US (Dept of Defense) Common Access Card (CAC)

### Physical Description & Operating Environment

10 Button PIN Pad | In-Line Netgard MFD Appliance | Size: 6.25 in. x 1.125 in. x 6.25 in. (15.9 cm x 2.5 cm x 15.9 cm) | Weight: 0.9 lb. (0.4 kg) | Power: Operating 100-240 V, 50/60 Hz Auto-Sensing Power Supply Input | Power Consumption: 0.6A | Temperature: 32°F – 122°F (0°C – 50°C)

## Accounting / Administrative

# KIP Data Security Features

At KIP, security is paramount. As a world leader in the development of digital wide format production technology, KIP is committed to keeping digital information safe and secure. Customers and potential customers can look to KIP as a trusted provider of secure solutions with many standard and optional security features.

Based on Department of Defense NISPOM specifications, the Image Overwrite security feature electronically shreds information stored on the hard disk as part of routine job processing.

Job Accounting and Data Tracking ensures that only properly authorized users are permitted to use a KIP device. Two additional fields, displayed in each KIP application can enforce tracking by Project or Department Number. These standard features feed the KIP Cost Center to generate production reports based on User, Project or Department usage.

Eliminate the risk of unauthorized access with the optional Removable Hard Disk Drive kit. The removable hard drive can be disconnected when the device is unattended. Multiple disk drives can be implemented allowing secure device sharing between different workgroups or departments. This option is frequently required by the US Government for management of classified information and highly recommended for commercial customers who print data that is subject to legal regulations including HIPAA, SOX and PCI.

The System K controller is designed and constructed to utilize standard open architecture PC components. KIP printing speeds and unique image processes are supported by the KIP System K Controller with Microsoft® IoT Enterprise embedded operating system. The Microsoft® partnership with KIP ensures an industry standard that provides excellent reliability.







## KIP Data Security Key Features



Image Overwrite | Removable Hard Disk Drive Accessory Kit | KIP System K Controller with Microsoft® IoT Enterprise Embedded Operating System | Standard Security Updates | Data Encryption and Virus Scanning Applications | KIP Secure Print | KIP Accounting Center Integration | KIP Cost Center Integration



### Image Overwrite

Electronically Shreds Copy, Print and Scan Data | Standard Feature | Automatic Deletion | 3 – Pass Erasure Algorithm | Configured via PrintPro.Net | Based on NISPOM 5220.22-M Requirements



### Removable Hard Disk Drive Kit

Share KIP Device between Secure Workgroups and Departments | Remove External Hard Disk Drive as Required | Additional Disk Drives Available | Management of Classified or Legally Restricted Data | Separate Usage for Confidential and Non-Confidential Work



### Job Accounting and Data Tracking

Access Control | User Authentication | Project Number Authentication | Scan/Print Authentication at Touchscreen | Scan/Print Authentication in KIP Software Apps | KIP Accounting Center Integration | KIP Cost Center Integration



### Windows® Operating System

Microsoft® Windows Enterprise IoT Partner | Accepted by IT Managers | Start Up and Shut Down Quickly | Improved Memory Utilization | Accepts Automatic Updates | Configure Microsoft® Management Console to Update via WSUS



### Data Encryption and Virus Scanning

Data Encryption via SSL and IP Security (IPSec) | Major Brands Tested | Accepts Virus Definition Updates



### KIP Secure Print

Confidential Printing | Unique 4 Digit Security PIN | Jobs Print when Released by User | Reduce Waste – No Uncollected Jobs | Standard Feature in all KIP Software Apps | Secure PIN from Smart Print via Email

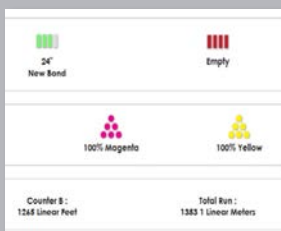
## Administrative

# KIP Printer Status / SNMP

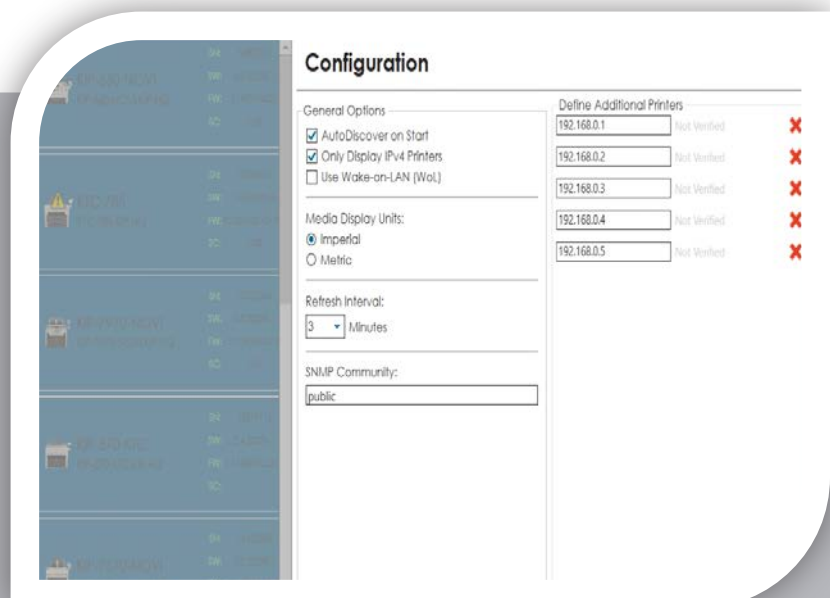
The KIP Printer Status application is the ideal solution for providing centralized status updates and information to administrators and users over a local or Wide Area Network. The app provides immediate access to view and manage the current status of all color and b&w KIP systems on the network via a single, convenient user interface. Using standard SNMP protocol, the KIP Printer Status application will automatically detect the available KIP printers and provide valuable information such as media levels, toner status and meter readings.

### KIP Printer E-Notifications

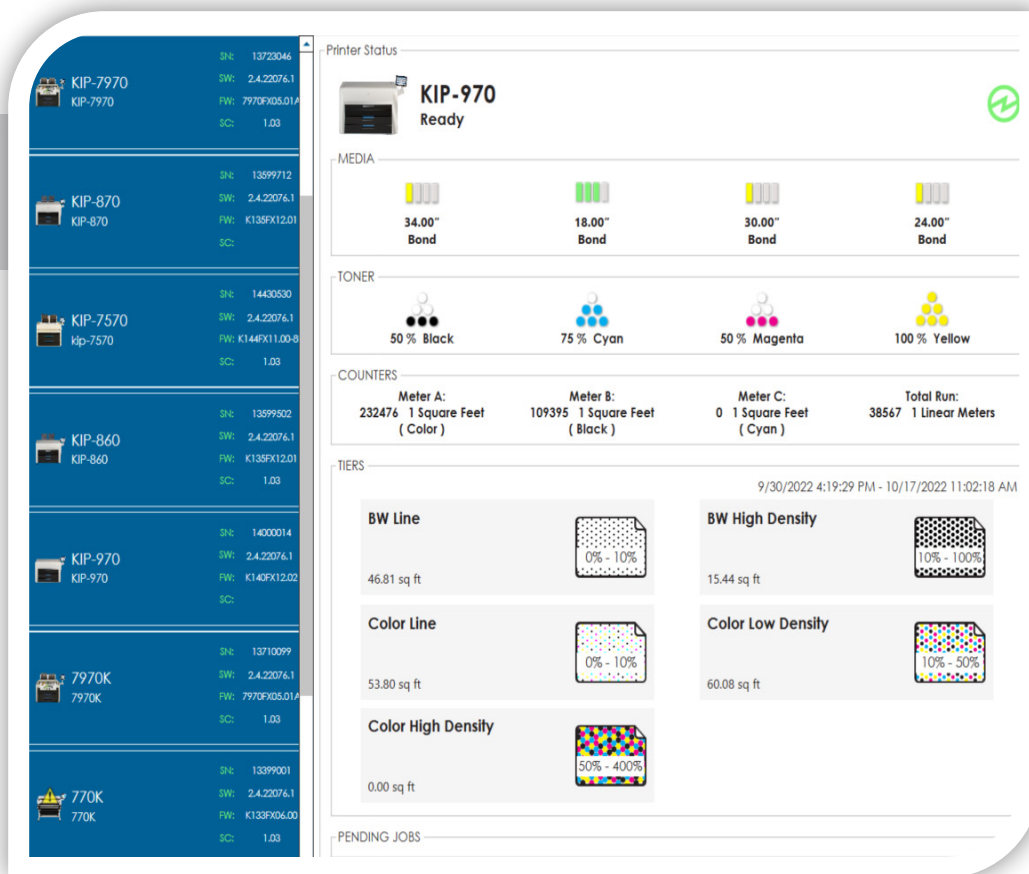
In conjunction with the KIP Printer Status application, each KIP is capable of sending detailed E-Notifications. Users receive Email confirmations that their job has reached the print queue and has completed printing; ready for pickup. If a system interruption occurs such as out of toner or paper, a detailed Email will immediately notify personnel. The System K controller automates the meter reading process by transmitting meter data via Email on a weekly or monthly basis. The KIP Cost Center software can interpret the meter information and provide reports for print and scan production for both color and b&w documents.



Visual Notification for Machine Status



KIP Printer Status Configuration



KIP Printer Status Printer Details

## KIP Printer Status / SNMP Key Features



SNMP Communication to KIP Printer | PC Based Windows® Application | 32 and 64 Bit Operating Systems | Monitor Status of KIP Printers | Auto Detect KIP Printer (LAN) | Add up to 10 Printers by IP Address (LAN or WAN) | Visual Notification for Machine Status | View all KIP Printers on a Single Screen | Quick Access to Print Queue via PrintPro.Net Link | Automated Meter Read | View KIP Tiers Coverage Information



### Machine Status

Blinking Attention Indicator | Online or Offline | Open Covers | Mis-Feeds | Current Print Meter



### Printer Notifications by Email

Job Received | Job Complete | Printer Out of Toner | Printer Mis-Feed | Printer Out of Paper | Job Requires Attention | Set Date and Time for Automated Meter Read | Meter Data for Use with KIP Cost Center | Current Job Status | Pending Job List



### Meter Information

Counter A – Square Feet / Meters | Counter B – Linear Feet / Meters | Total Run – Lifetime Meter Count | B&W and Color Meter Count



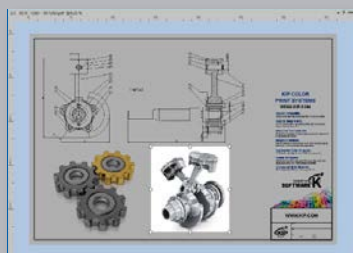
## KIP 720 / 2300 Stand Alone Scan Station

# KIP ImagePro – Scan & Copy

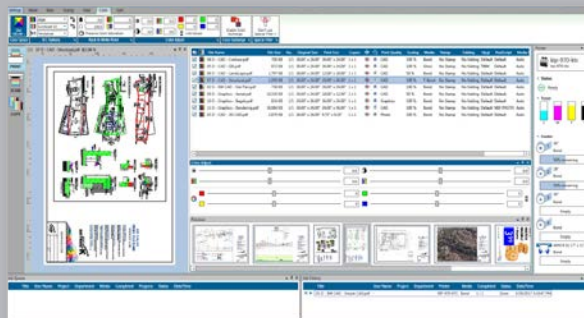
KIP ImagePro – Scan & Copy software is the professional's choice for wide format production Scan & Copy providing a complete set of features for high resolution color and B&W copying & scan-to-file applications. For exclusive use with the KIP 720 and KIP 2300 scanners.

KIP ImagePro tools are designed to enhance color management capabilities. KIP ImagePro offers extensive features for increased productivity including image quality adjustments, high definition viewer with advanced Area of Interest functions, auto document width detection along with Auto Start for stream feeding originals, scan to local drives, LAN locations, USB and cloud storage.

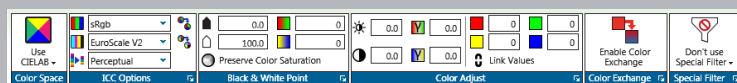
Simplify document quality when scanning or copying difficult originals by selecting B&W point settings on-the-fly adjustments to quickly snap text to solid black or to clean up background. Des skew documents automatically. Sophisticated project details can be highlighted with Advanced Area of Interest selections. KIP Smart Stack simplifies the accurate collation of mixed sets of color and black and white prints. The professional color editor included with KIP ImagePro offers a high definition color editor with real time color correction viewing. Create impressive vibrant color impact for posters, banners, point of purchase, business communications, safety, and technical images. Streamline color correction with color exchange selections from a choice of multiple color spaces for optimal results.



Area of Interest (AOI)



Matrix Scan & Copy with HD Viewer, "Pop out" Panels & Device Status



Professional Color Management

## KIP ImagePro Key Features



Auto Start for Stream Feed Productivity | Auto Width Detection | Auto Deskew | Auto Increment of File Name | Advanced Area of Interest Selection | Professional Color Editor & Correction Features | KIP Smart Stacking | High Definition Viewing | Customizable Interface for Personalized View

### KIP ImagePro – Scan & Copy Feature Descriptions



#### File Renaming Mode

Rapidly rename hundreds of files with KIP's file renaming tool. Batch scan using production file naming conventions and rename the files post scanning. Use KIP's HD Viewer to zoom in and lock onto the title block area. Enter a new name and press enter to auto zoom to the same location on the next file.



#### Image Navigator

Within the KIP High Definition viewer, quickly navigate long length images or jump to any position with the Image Navigator. The repositionable thumbnail displays the current location on the zoomed in image. Set the location of the thumbnail view in any of the four corners. Select any new location or drag the Navigator box to change locations.



#### Stream Feeding Productivity

Auto Start for continuous original document feeding for maximum productivity | Auto De-skew | Auto Width Detection | Auto File Name Increment | Auto Length Detection | Live Preview



#### Advanced Area of Interest

Select Size | Position | Save only the "area of interest" to enhance communication of sophisticated or important details



#### Professional Color Editor & Correction Features

High definition color editor with real time color correction viewing to create impressive vibrant color impact for posters, banners, point of purchase, business communications, safety, and technical images. Streamlines color correction with color exchange selections from a choice of multiple color spaces for optimal results.



#### High Definition Viewing

High resolution image pre-flight viewer to include review of color adjustments and preset creations | Color or B&W | AOI Selection - Scale, Position, Print | Page ruler | View Scale to Pixels or In-Screen



#### Customizable Interface for Personalized View

Access your preferred productivity features with ease using "Pop Out" tools and panels



#### Scan Mode

B&W, Grayscale & Color Scan to File | Scan to Local Drive, USB, LAN or Cloud locations | Wide Variety of File Formats | Scan to Multi-Page PDF and TIF | Set Image Compression | Utilize Templates | Embed Stamps | Control Margins | Mirror and Rotation



#### Copy Mode

Copy to KIP System K B&W and Color Systems | B&W, Grayscale and Color Adjustments | Save Unlimited Presets and Templates | Secure Printing | Use Set Separation pages | KIP Accounting Integration | KIP Cost Center Integration





## Print Management Solutions

# KIP Custom Media Manager

The KIP Custom Media Manager is a graphic user interface that allows the operator to identify and customize names to a wide range of media types and the KIP System's specifications.

- Integrated with KIP Color and B&W Systems
- Automatically Adjust System Parameters
- Descriptive Media Categories

