



WIDE FORMAT VERTICAL MARKETS



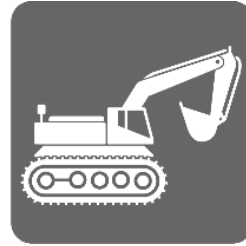
Vertical Markets — Index



Aerospace



Architects



Construction



Defense



Engineering



GIS



**Government
Agencies**



Higher Education



Manufacturing



Petroleum



Print for Pay



Retail/Restaurants



Telecom



Utilities



Manufacturing



Snap Shot

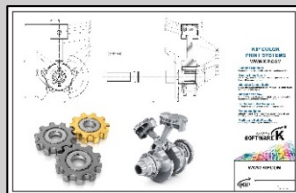
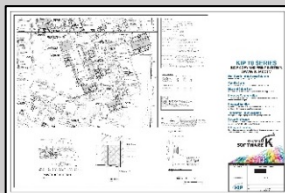
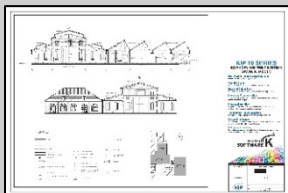
- KIP offers superior build quality in top-stacking space saving configurations for walk-up convenience or high demand environments.
- KIP systems improve lean manufacturing processes by delivering workflow automation for simple or complex file to print workflow.
- Manufacturers can trust KIP to provide secure solutions with many standard and optional security features.
- KIP ImagePro, one application for all wide format imaging is included with all KIP systems.

Prints in Action

- Crisp Detailed CAD Drawings
- Project Management Charts and Posters
- Presentation Material
- Marketing Communication
- Safety Posters
- Long Length Printing

KIP Feature Benefits

- KIP 12.1" smart tablet-style touchscreen copy, scan and print
- USB scan and print from touchscreen
- KIP ImagePro – fast easy print control features
 - Intelligent Image Interaction-High Definition Viewer
 - Area of Interest selection and printing
 - Spot Color Exchange match a logo or change a line color
 - KIP Workflow Automation for template based printing
 - KIP Secure Print
- KIP ImagePro Scan - file naming and image clean up for archiving
- KIP Accounting & Cost Center turn printing into billable revenue
- KIP PrintPro.net – feature rich browser print submission tool
 - No need to install application software
 - MAC/UNIX/LINUX environments
 - KIP Secure Print
 - System management and printer preferences
 - KIP Windows 7/8/10 Driver – WHQL, single source install
 - True HDI AutoCAD Driver
- KIP Cloud Connect anytime, anywhere collaboration
- KIP is a trusted provider of secure solutions



Black & White

Color

Safer work, better lives



Snap Shot

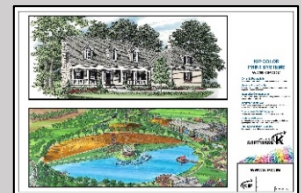
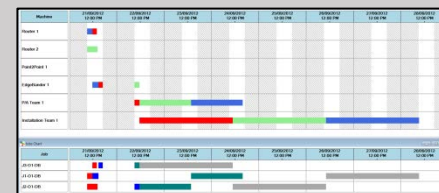
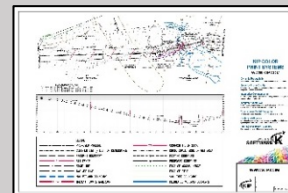
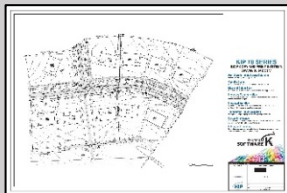
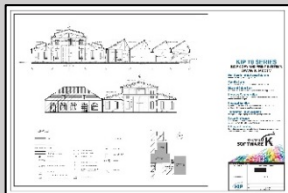
- KIP color and black & white systems efficiently deliver creative concepts to developers and project teams in vivid color or soft grayscale saving valuable time with exceptional lower cost of operation.
- KIP accounting and Cost Center turn printing into project billing revenue with easy to read, professional, and concise graphical reports.
- KIP scan systems are fully integrated with the included KIP ImagePro software for image clean up of historical documents or documents in poor condition.
- KIP ImagePro, one application for all wide format imaging is included with all KIP systems.

Prints in Action

- High Quality Technical Imaging
- Plan, Bid, Build Sets
- Presentations for Clients
- Project Management Posters and Charts
- Archival Documents
- Marketing Communications
- Plan Renderings

KIP Software Applications

- KIP 12.1" smart tablet-style touchscreen for convenient copy, scan and print.
- USB scan and print from touchscreen
- KIP ImagePro – fast and easy print control features
 - Intelligent image interaction with the High Definition Viewer
 - Area of Interest selection and printing.
 - KIP Workflow Automation for Template based Printing
 - KIP Secure Print
- KIP ImagePro Scan allows file naming and image clean up for archiving historical documents
- KIP Accounting and Cost Center turn printing into billable revenue
- KIP PrintPro.net – feature rich browser based print submission tool and system management
 - No need to install application software
 - MAC/UNIX/LINUX environments
 - KIP Secure Print
 - Administrator access for printer preferences and settings
- KIP Windows Driver – single source Windows 7/8/10 installation, WHQL certified
- True HDI AutoCAD Driver
- KIP Cloud Connect - anytime, anywhere collaboration.
- KIP – trusted provider of secure solutions
- KIP Smart Print - anytime, anywhere printing



Black & White

Color



Engineers



Snap Shot

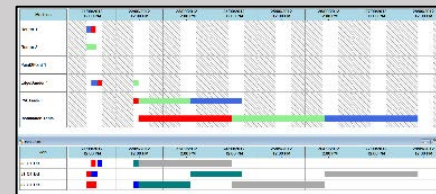
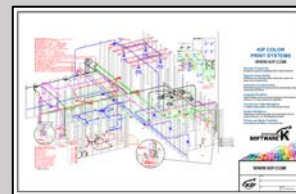
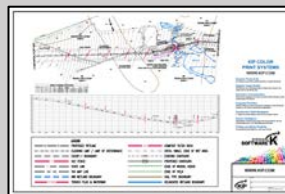
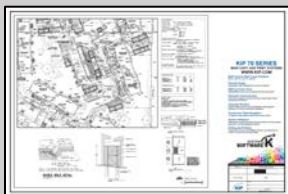
- KIP color and black & white space saving configurations improve the project design process and communicate critical details in bold color to effectively present vision concepts.
- KIP scan systems are fully integrated with the included KIP ImagePro software for image clean up of historical documents or documents in poor condition.
- KIP ImagePro, one application for all wide format imaging is included with all KIP systems.

Prints in Action

- Crisp Detailed Technical Imaging
- Project Management Charts and Posters
- Infrastructure Maps
- Electrical Circuit Charts
- Piping and Instrument Drawings
- Block and Logic Diagrams
- Fabrication Drawings
- Marketing Communication

KIP Software Applications

- KIP 12.1" smart tablet-style touchscreen for convenient copy, scan and print.
- USB scan and print from touchscreen
- KIP ImagePro – fast and easy print control features
 - Intelligent image interaction with the High Definition Viewer
 - Area of Interest selection and printing.
 - KIP Workflow Automation for Template based Printing
 - KIP Secure Print
- KIP ImagePro Scan allows file naming and image clean up for archiving historical documents
- KIP Accounting and Cost Center turn printing into billable revenue
- KIP PrintPro.net – feature rich browser based print submission tool and system management
 - No need to install application software
 - MAC/UNIX/LINUX environments
 - KIP Secure Print
 - Administrator access for printer preferences and settings
- KIP Windows Driver – single source Windows 7/8/10 installation, WHQL certified
- True HDI AutoCAD Driver
- KIP Cloud Connect - anytime, anywhere collaboration.
- KIP – trusted provider of secure solutions
- KIP Smart Print - anytime, anywhere printing



Black & White

Color



Construction



Snap Shot

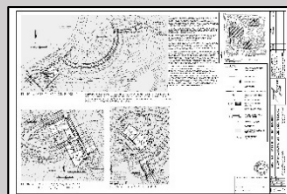
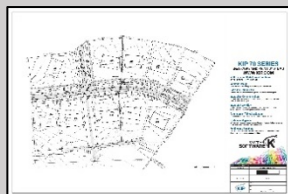
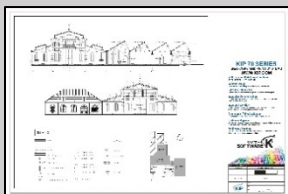
- KIP color and black & white systems deliver significant benefits to the plan, bid, build process offering fast low-cost plan reproduction.
- KIP dry toner produces the highest image durability for indoor and the toughest outdoor conditions.
- KIP systems offer exceptional build quality and are suitable for a range of wide format printing utilized by the construction markets.
- KIP ImagePro, one application for all wide format imaging is included with all KIP systems.

Prints in Action

- High Detail Technical Documents
- Plan, Bid, Build Sets
- Signage
- Project Management and Charts
- Planning and Zoning Documentation
- High Print Durability for Mark-ups
- Outdoor Job Site Signage
- Site Safety Posters
- Marketing Communication

KIP Software Applications

- KIP 12.1" smart tablet-style touchscreen for convenient copy, scan and print.
- USB scan and print from touchscreen
- KIP ImagePro – fast and easy print control features
 - Intelligent image interaction with the High Definition Viewer
 - Area of Interest selection and printing.
 - KIP Workflow Automation for Template based Printing
 - KIP Secure Print
- KIP ImagePro Scan allows file naming and image clean up for archiving historical documents
- KIP Accounting and Cost Center turn printing into billable revenue
- KIP PrintPro.net – feature rich browser based print submission tool and system management
 - No need to install application software
 - MAC/UNIX/LINUX environments
 - KIP Secure Print
 - Administrator access for printer preferences and settings
- KIP Windows Driver – single source Windows 7/8/10 installation, WHQL certified
- True HDI AutoCAD Driver
- KIP Cloud Connect - anytime, anywhere collaboration.
- KIP – trusted provider of secure solutions
- KIP Smart Print - anytime, anywhere printing



Project	Phase	Start	End	Status	Notes
Project A	Phase 1	2023-01-01	2023-03-31	Completed	On schedule
	Phase 2	2023-04-01	2023-06-30	In Progress	Minor delays
	Phase 3	2023-07-01	2023-09-30	Planned	
	Phase 4	2023-10-01	2023-12-31	Planned	
Project B	Phase 1	2023-01-01	2023-03-31	Completed	On schedule
	Phase 2	2023-04-01	2023-06-30	In Progress	Minor delays
	Phase 3	2023-07-01	2023-09-30	Planned	
	Phase 4	2023-10-01	2023-12-31	Planned	



Black & White

Color



Reprographics



Snap Shot

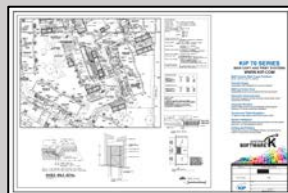
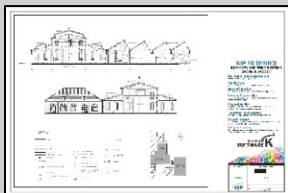
- KIP color and black & white systems produce prints at a consistent speed and low cost of operation, creating efficiency for all production environments.
- KIP multifunction touchscreen allows for easy walk up operations for retail print for pay environments.
- KIP Accounting Center and Cost Center provide easy to use accounting services that allow for knowledge of print cost for cost per copy billing.
- KIP scan stations allow for easy archival of historic documents while providing a uniform experience for the operators in KIP ImagePro – Copy, Print, and Scan.
- KIP ImagePro, one application for all wide format imaging is included with all KIP systems.

Prints in Action

- Breakthrough Image Quality
- Technical Images
- Mark- ups
- GIS Images
- Aerial Images
- Posters
- Banners
- Scan Archival
- Copy Services
- Project Document Management
- Marketing Communication

KIP Software Applications

- KIP 12.1” smart tablet-style touchscreen for convenient copy, scan and print.
- USB scan and print from touchscreen
- KIP ImagePro – fast and easy print control features
 - Intelligent image interaction with the High Definition Viewer
 - Area of Interest selection and printing.
 - Spot Color Exchange to match a logo or change a line color
 - Create nested or two-up images
 - Create wall-sized prints using paneling
 - KIP Workflow Automation for Template based Printing
- KIP ImagePro Scan allows file naming and image clean up for archiving historical documents
- KIP Accounting and Cost Center turn printing into billable revenue
- KIP PrintPro.net – feature rich browser based print submission tool and system management
 - No need to install application software
 - MAC/UNIX/LINUX environments
 - Administrator access for printer preferences and settings
- KIP Windows Driver – single source Windows 7/8/10 installation, WHQL certified
- True HDI AutoCAD Driver
- KIP Cloud Connect - anytime, anywhere collaboration.
- KIP Status - instant fleet status updates
- KIP – trusted provider of secure solutions



Black & White

Color



Retail / Restaurants



Snap Shot

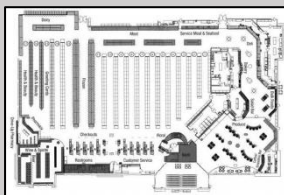
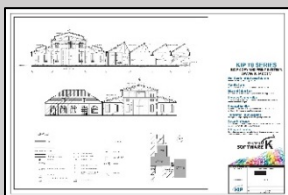
- Retail and Restaurants utilize KIP color and black & white systems for consistent speed technology to produce high quality vibrant color images at market leading low print cost.
- Retail produce high volumes of design sets or short print runs for posters and banners for impressive and distinctive indoor and outdoor medias.
- KIP systems produce images that are immediately dry, UV light fast, waterproof and have the highest image durability for indoor and outdoor displays.
- KIP ImagePro, one application for all wide format imaging is included with all KIP systems.

Prints in Action

- Retail POP/POS Signage
- Construction Management
- Floor Graphics
- IT Network Diagrams
- Marketing Communication
- Store Layout and Design
- Large Window and Wall Graphics
- Long Length Banners

KIP Software Applications

- KIP 12.1" smart tablet-style touchscreen for convenient copy, scan and print.
- USB scan and print from touchscreen
- KIP ImagePro – fast and easy print control features
 - Intelligent image interaction with the High Definition Viewer
 - Area of Interest selection and printing.
 - Spot Color Exchange to match a logo or change a line color
 - Create nested or two-up images
 - Create wall-sized prints using paneling
 - KIP Workflow Automation for Template based Printing
- KIP Accounting and Cost Center turn printing into billable revenue
- KIP PrintPro.net – feature rich browser based print submission tool and system management
 - No need to install application software
 - MAC/UNIX/LINUX environments
 - Administrator access for printer preferences and settings
- KIP Windows Driver – single source Windows 7/8/10 installation, WHQL certified
- KIP Cloud Connect - anytime, anywhere collaboration



Black & White

Color



Higher Education



Snap Shot

- Local colleges, universities, and large municipal school districts have centralize print rooms.
- Many include contact card readers for student access for revenue tracking.
- They rely on exceptional build quality and a range of wide format printing including technical documents, maps, posters and banners for both indoor and outdoor conditions.
- Various education fields will utilize wide format printers including marketing, business communication, psychology, engineering, architectural, and graphic design.
- KIP ImagePro, one application for all wide format imaging is included with all KIP systems.

Prints in Action

- Campus and Event Communication
- Student Projects
- Research Presentations
- Plan and Manage Campus Facilities
- IT Infrastructure
- Long Length Banner Printing
- Wall Sized Graphic Displays

KIP Software Applications

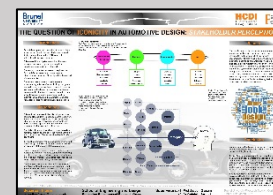
- KIP 12.1" smart tablet-style touchscreen for convenient copy, scan and print.
- USB scan and print from touchscreen
- KIP ImagePro – fast and easy print control features
 - Intelligent image interaction with the High Definition Viewer
 - Area of Interest selection and printing.
 - Spot Color Exchange to match a logo or change a line color
 - Create wall-sized prints using paneling
 - KIP Workflow Automation for Template based Printing
- KIP ImagePro Scan allows file naming and image clean up for archiving historical documents
- KIP Accounting and Cost Center turn printing into billable revenue
- KIP PrintPro.net – feature rich browser based print submission tool and system management
 - No need to install application software
 - MAC/UNIX/LINUX environments
 - Administrator access for printer preferences and settings
- KIP Windows Driver – single source Windows 7/8/10 installation, WHQL certified
- True HDI AutoCAD Driver
- KIP Cloud Connect - anytime, anywhere collaboration.
- Card Reader Systems - swipe for role based access and control
- KIP Smart Print - anytime, anywhere printing



Black & White



Color





Government Agencies



Snap Shot

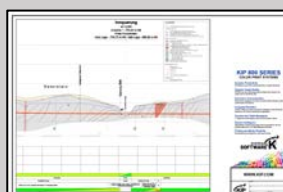
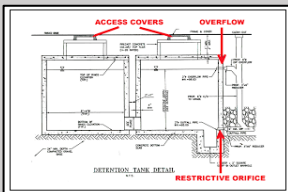
- Government agencies have an ever-increasing demand for fast, high quality, cost-saving reproduction for local, state, and federal government agency departments.
- Government agencies require space saving designs for convenient walk-up copy/scan/print or internal print production centers.
- KIP dry toner produces the highest image durability for indoor and the toughest outdoor conditions.
- KIP Cloud connect allows for collaboration throughout the organization.
- KIP ImagePro allows for a uniform experience for all operators in the organization when using scan, print, or copy functionality.
- KIP ImagePro, one application for all wide format imaging is included with all KIP systems.

Prints in Action

- Prints in Action:
- High Quality Technical Imaging
- GIS Maps
- Building Schematics
- Emergency and Disaster Management
- Department of Transportation
- Aerial Imagery
- Facility Management
- Police/Fire Departments
- Permitting and Zoning Departments
- IT Schematics
- Public Communication
- Safety Posters

KIP Feature Benefits

- KIP 12.1" smart tablet-style touchscreen for convenient copy, scan and print.
- USB scan and print from touchscreen
- KIP ImagePro – fast and easy print control features
 - Intelligent image interaction with the High Definition Viewer
 - Spot Color Exchange to match a logo or change a line color
 - KIP Workflow Automation for Template based Printing
 - KIP Secure Print
- KIP ImagePro Scan allows file naming and image clean up for archiving historical documents
- KIP Accounting and Cost Center turn printing into billable revenue
- KIP PrintPro.net – feature rich browser based print submission tool and system management
 - No need to install application software
 - MAC/UNIX/LINUX environments
 - KIP Secure Print
 - Administrator access for printer preferences and settings
- KIP Windows Driver – single source Windows 7/8/10 installation, WHQL certified
- True HDI AutoCAD Driver
- KIP Cloud Connect - anytime, anywhere collaboration.
- KIP Status - instant fleet status updates
- KIP – trusted provider of secure solutions
- Card Reader Systems - swipe for role based access and control
- KIP Smart Print - anytime, anywhere printing



Black & White

Color



Snap Shot

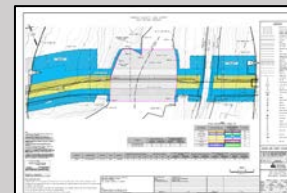
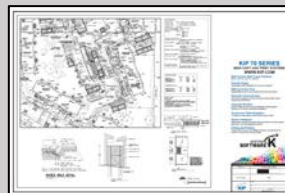
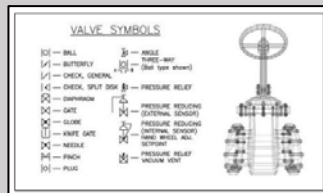
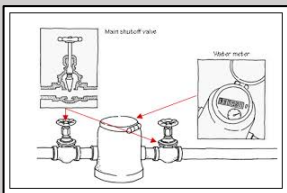
- KIP color and black & white systems deliver exceptional build quality and reliability to support 24/7 emergency center operations, required by utilities.
- KIP systems offer walk-up convenience or high-volume production printing for enterprise campus facilities.
- KIP dry toner prints deliver the highest image durability for indoor and the toughest outdoor conditions.
- KIP Fold systems offer a range of packet sizes for any project.
- KIP ImagePro, one application for all wide format imaging is included with all KIP systems.

Prints in Action

- High Quality Technical Imaging
- High Print Image Durability
- Electrical Grid Design
- Emergency Planning
- Water and Waste Management infrastructure
- Urban/Demographic Mapping
- Project and Facilities Management
- Seismic Data
- GIS Documentation
- Satellite Imagery and Aerials Maps
- Safety Posters
- Public Communication
- Long Length Printing

KIP Software Applications

- KIP 12.1" smart tablet-style touchscreen for convenient copy, scan and print.
- USB scan and print from touchscreen
- KIP ImagePro – fast and easy print control features
 - Intelligent image interaction with the High Definition Viewer
 - Area of Interest selection and printing.
 - KIP Workflow Automation for Template based Printing
 - KIP Secure Print
- KIP ImagePro Scan allows file naming and image clean up for archiving historical documents
- KIP Accounting and Cost Center turn printing into billable revenue
- KIP PrintPro.net – feature rich browser based print submission tool and system management
 - No need to install application software
 - MAC/UNIX/LINUX environments
 - KIP Secure Print
 - Administrator access for printer preferences and settings
- KIP Windows Driver – single source Windows 7/8/10 installation, WHQL certified
- True HDI AutoCAD Driver
- KIP Cloud Connect - anytime, anywhere collaboration.
- KIP Status - instant fleet status updates
- KIP – trusted provider of secure solutions
- Card Reader Systems - swipe for role based access and control
- KIP Smart Print - anytime, anywhere printing



Black & White

Color

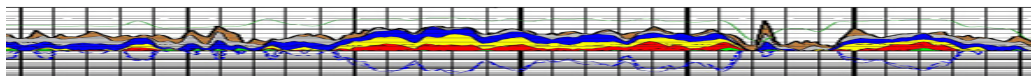


Snap Shot

- KIP color and black & white print systems assist the petroleum industry in the production of oil well logs, reservoir simulation modeling, oil refinery installations, and GANTT charts through the extensive features provided in the KIP ImagePro software application.
- Operators achieve a consistent print speed with KIP systems to keep projects on schedule.
- Operators have the ability to print an oil well log up to 275+ feet.
- KIP ImagePro, one application for all wide format imaging is included with all KIP systems.

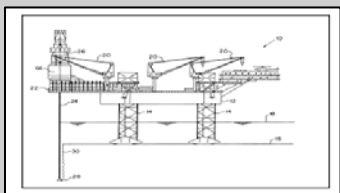
Prints in Action

- Crisp Detailed Technical Imaging
- Project Management Charts and Posters
- GIS Documents
- Site Safety Posters
- Job Site Banners and Posters
- Site Construction and Maintenance Documentation
- Satellite Imagery and Aerials Maps
- Well Logs
- Seismic Data
- Long Length Printing

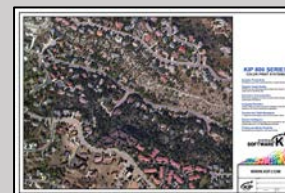
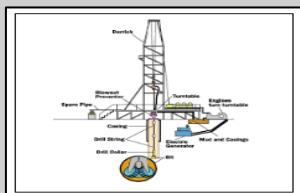


KIP Software Applications

- KIP 12.1" smart tablet-style touchscreen for convenient copy, scan and print.
- USB scan and print from touchscreen
- KIP ImagePro – fast and easy print control features
 - Intelligent image interaction with the High Definition Viewer
 - Area of Interest selection and printing.
 - KIP Workflow Automation for Template based Printing
 - KIP Secure Print
- KIP ImagePro Scan allows file naming and image clean up for archiving historical documents
- KIP Accounting and Cost Center turn printing into billable revenue
- KIP PrintPro.net – feature rich browser based print submission tool and system management
 - No need to install application software
 - MAC/UNIX/LINUX environments
 - KIP Secure Print
 - Administrator access for printer preferences and settings
- KIP Windows Driver – single source Windows 7/8/10 installation, WHQL certified
- True HDI AutoCAD Driver
- KIP Cloud Connect - anytime, anywhere collaboration.
- KIP Status - instant fleet status updates
- KIP – trusted provider of secure solutions
- Card Reader Systems - swipe for role based access and control
- KIP Smart Print - anytime, anywhere printing



Black & White



Activity	Start	End	Resources	Cost	Status
Activity 1	1/15/17	2/15/17	10	\$100,000	Complete
Activity 2	2/15/17	3/15/17	15	\$150,000	In Progress
Activity 3	3/15/17	4/15/17	20	\$200,000	Not Started
Activity 4	4/15/17	5/15/17	25	\$250,000	Not Started
Activity 5	5/15/17	6/15/17	30	\$300,000	Not Started



Color



Snap Shot

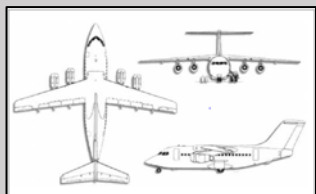
- KIP color and black & white solutions improve the design process efficiency, reducing cost and improving lean manufacturing processes.
- KIP ImagePro software suite is included with all KIP systems.
- Customers look to KIP as a trusted provider of secure solutions with many standard and optional security features.

Prints in Action

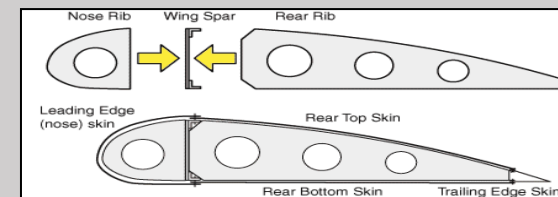
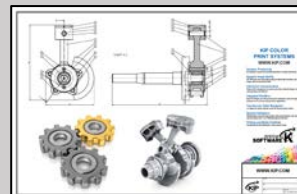
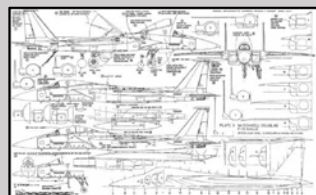
- Crisp Detailed CAD Drawings
- Project Management Charts and Posters
- Aircraft Documentation
- Training and Presentation Material
- Marketing Communication
- Safety Posters
- Long Length Printing

KIP Software Applications

- KIP 12.1" smart tablet-style touchscreen for convenient copy, scan and print.
- USB scan and print from touchscreen
- KIP ImagePro – fast and easy print control features
 - Intelligent image interaction with the High Definition Viewer
 - Area of Interest selection and printing.
 - KIP Workflow Automation for Template based Printing
 - KIP Secure Print
- KIP ImagePro Scan allows file naming and image clean up for archiving historical documents
- KIP Accounting and Cost Center turn printing into billable revenue
- KIP PrintPro.net – feature rich browser based print submission tool and system management
 - No need to install application software
 - MAC/UNIX/LINUX environments
 - KIP Secure Print
 - Administrator access for printer preferences and settings
- KIP Windows Driver – single source Windows 7/8/10 installation, WHQL certified
- True HDI AutoCAD Driver
- KIP Cloud Connect - anytime, anywhere collaboration.
- KIP Status - instant fleet status updates
- KIP – trusted provider of secure solutions
- Card Reader Systems - swipe for role based access and control
- KIP Smart Print - anytime, anywhere printing



Black & White



Color





Snap Shot

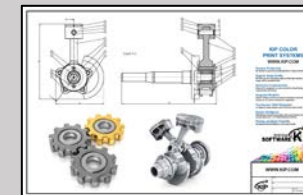
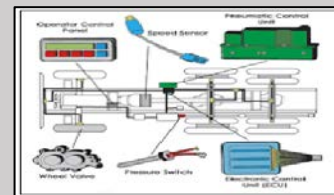
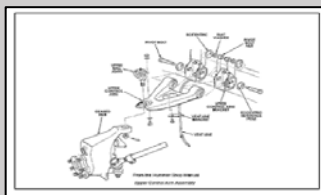
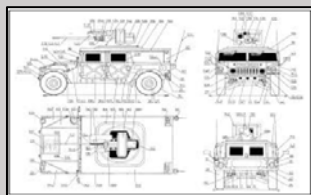
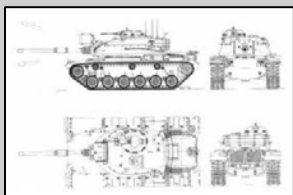
- KIP color and black & white solutions improve the design process efficiency, reducing cost and improving lean manufacturing processes.
- Customers look to KIP as a trusted provider of secure solutions with many standard and optional security features including removable hard drive.
- KIP ImagePro, one application for all wide format imaging is included with all KIP systems.

Prints in Action

- High Quality Technical Imaging
- Project Management Charts and Posters
- Equipment Design Documentation
- Training and Presentation Material
- Marketing Communication
- Safety Posters
- Long Length Printing

KIP Software Applications

- KIP 12.1" smart tablet-style touchscreen for convenient copy, scan and print.
- USB scan and print from touchscreen
- KIP ImagePro – fast and easy print control features
 - Intelligent image interaction with the High Definition Viewer
 - Area of Interest selection and printing.
 - KIP Workflow Automation for Template based Printing
 - KIP Secure Print
- KIP ImagePro Scan allows file naming and image clean up for archiving historical documents
- KIP Accounting and Cost Center turn printing into billable revenue
- KIP PrintPro.net – feature rich browser based print submission tool and system management
 - No need to install application software
 - MAC/UNIX/LINUX environments
 - KIP Secure Print
 - Administrator access for printer preferences and settings
- KIP Windows Driver – single source Windows 7/8/10 installation, WHQL certified
- True HDI AutoCAD Driver
- KIP Cloud Connect - anytime, anywhere collaboration.
- KIP Status - instant fleet status updates
- KIP – trusted provider of secure solutions
- Card Reader Systems - swipe for role based access and control
- KIP Smart Print - anytime, anywhere printing



Black & White

Color



Snap Shot

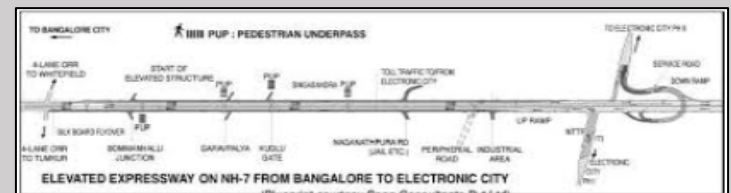
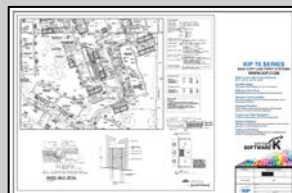
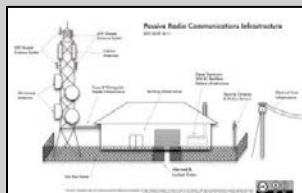
- The 12.1" intuitive smart touchscreen display that is standard on all KIP color and black & white systems offers convenient walk-up copy, print and scan features that are easy to use and keep your project on track.
- Edit images with area of interest printing from both the touchscreen and print submission tool – KIP ImagePro.
- KIP dry toner prints deliver the highest image durability for indoor and the toughest outdoor conditions.
- Highlight or change line colors to enhance project communication with KIP ImagePro.
- KIP systems offer exceptional build quality and reliability.
- KIP scan systems with KIP ImagePro offer image clean for quality archival imaging of historic documents and cloud connectivity for project collaboration access anytime anywhere.
- KIP ImagePro, one application for all wide format imaging is included with all KIP systems.

Prints in Action

- Crisp Detailed Technical Imaging
- Project Management Charts and Posters
- Site Safety Posters
- Job Site Communication
- Equipment and Maintenance Documentation
- GIS Documents
- Satellite Imagery and Aerials Maps
- Long Length Printing

KIP Software Applications

- KIP 12.1" smart tablet-style touchscreen for convenient copy, scan and print.
- USB scan and print from touchscreen
- KIP ImagePro – fast and easy print control features
 - Intelligent image interaction with the High Definition Viewer
 - Area of Interest selection and printing.
 - KIP Workflow Automation for Template based Printing
 - KIP Secure Print
- KIP ImagePro Scan allows file naming and image clean up for archiving historical documents
- KIP Accounting and Cost Center turn printing into billable revenue
- KIP PrintPro.net – feature rich browser based print submission tool and system management
 - No need to install application software
 - MAC/UNIX/LINUX environments
 - KIP Secure Print
 - Administrator access for printer preferences and settings
- KIP Windows Driver – single source Windows 7/8/10 installation, WHQL certified
- True HDI AutoCAD Driver
- KIP Cloud Connect - anytime, anywhere collaboration.
- KIP Status - instant fleet status updates
- KIP – trusted provider of secure solutions
- Card Reader Systems - swipe for role based access and control
- KIP Smart Print - anytime, anywhere printing



Black & White

Color

Snap Shot

GIS

Geographic information system designed to capture, store, manipulate, analyze, manage, and present all types of geographically referenced data.

File Formats

PDF (most common), TIFF (popular among graphic artists)

Autodesk

Autodesk develops AutoCAD which has 85% of the design market share.

HDI Driver

Autodesk driver used specifically for AutoCAD applications.

Card Reader Systems

Utilize card reader systems to log into the machine via a card swipe or scan.

Removable Hard Drive Kit

Gain the ability to remove your hard drive from a KIP system to store in a secure location.

Short print runs

A large quantity of prints that need to be produced quickly for a short run on display

Page Sizes

- Architectural (ARCH)
 - A Size = 9" x 12"
 - B Size = 12" x 18"
 - C Size = 18" x 24"
 - D Size = 24" x 36"
 - E Size = 36" x 48"
- Engineering (ANSI)
 - A Size = 8.5" x 11"
 - B Size = 11" x 17"
 - C Size = 17" x 22"
 - D Size = 22" x 34"
 - E Size = 34" x 44"