

900 SERIES

Signature Features

PRODUCTIVITY

- Color Printing - 5,760 Sq. Ft. per Hour
- Black & White Printing 7,200 Sq. Ft. per Hour
- KIP ImagePro

DESIGN

- 4 Roll with 7,800 Sq. Ft. Media Capacity
- High Capacity Toner Cartridges
- Professional Edge Alignment Stacking

CONFIGURATIONS

- High Demand Dual Footprint Design
- Production or Convenience Scanning

KIP 970

KIP 980

KIP 990



Faster, Smarter, **More Efficient**

Faster The most advanced high demand wide format color print system, delivers consistent productivity.

Smarter Brilliant multi-tasking with KIP Smart multi-function touchscreen and KIP Image Pro software, which is intelligently integrated with all KIP Accessories.

More Efficient KIP 900 Series technology lowers operating costs.



High Demand Color Systems



PRINT SYSTEM



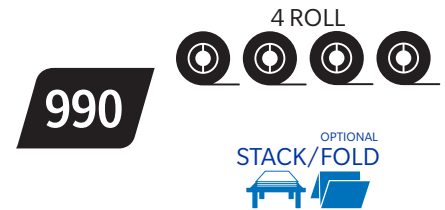
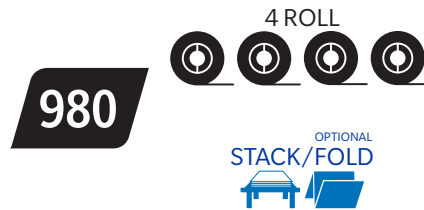
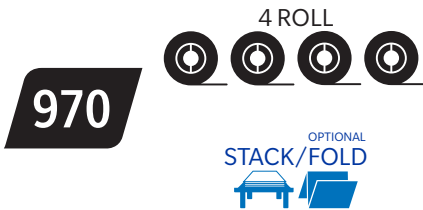
MULTIFUNCTION SYSTEM

with KIP 720 CIS convenience scanner



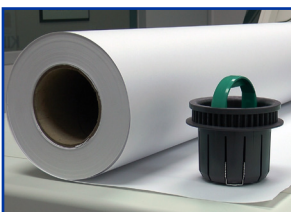
PRODUCTION SYSTEM

with KIP 2300 CCD production scanner



*All speeds represent D / A1 size prints per minute

The benefits of **Efficiency**



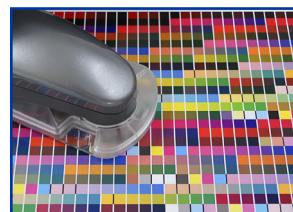
EXPANDED MEDIA CAPACITY

An ergonomic roll cap system simplifies the process of loading the 7,800 square foot / 725 m² media capacity.



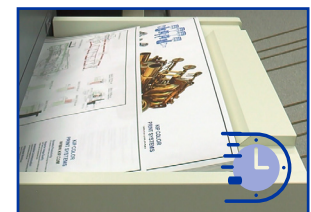
LARGE CAPACITY TONER

Each CMYK cartridge contains 1,500 gms of toner for a total capacity of 6,000 gms - allowing longer uninterrupted color and black & white print runs for continuous system productivity.



AUTOMATIC CALIBRATION

For color images that compliment the highest standards, an exclusive single belt imaging system performs automatic calibrations for precise imaging and bold, expressive color output.



QUICK SWITCH TECHNOLOGY

Mixed print size sets at full production speed. The KIP 900 Color Series print technology eliminates roll switching delays for increased productivity.