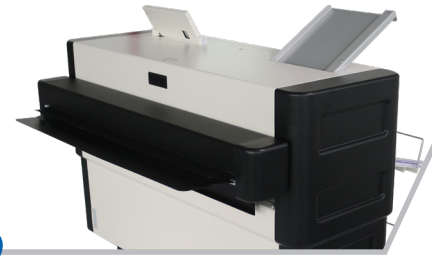




KIP Fold 1700



SPECIFICATIONS

Features

Compact, Single Pass, Fold Roller Technology with Printer Decoupling Design (Bridgeless)

Fully Integrated, One-Step Fold Packet Selection from KIP System Touch Panel (Copy/Print), KIP ImagePro, KIP PrintPro.NET, KIP Windows & AutoCAD HDI Drivers

Ultra Quiet Operation

Unfolded prints stack on front stacking print tray

International fold packet standards

KIPFold

Compatible Black & White Print Systems	KIP 71 Series, KIP 75 Series, KIP 79 Series
Compatible Color Print Systems	KIP 770, 780, 790, 775, 785, 795
Fold Technology	Microprocessor Controlled Fold Rollers with Color Touch Screen
Paper Feed	Automatic for Fanfold & Manual for Crossfold
Media Width	11" - 36" / 279 - 914 mm
Media Length*	17" - 20' / 420 mm - 6 m
Media Types	Bond / Plain Paper
Media Weight	20 - 24 lb / 75 - 90 gsm
Fold Types	DIN, ANSI or ARCH packet sizes
Total Fold Programs	Up to 255
Fan Fold Panel Sizes	6.7" - 9" / 170 - 230 mm (adjustable)
Fan Fold Margins	0" - 1.5" / 0 - 40 mm
Cross Fold Panel Sizes	10" - 12" / 250 - 320 mm (adjustable)
Fan Fold Stacking	Up to 10
Cross Fold Stacking	Up to 5 (E / A0 Packets)
Flat Stacking	The integrated front stacking print tray on the printer is used for flat stacking (fully integrated and automatically selected)

Environmental

Electrical Requirements	100 - 120 Vac; 50/60 Hz; 10 A 200 - 240 Vac; 50/60 Hz; 10 A
Power Consumption	Standby 45 W, Maximum 90 W
Weight	287 lb. / 130 kg
Weight - with Pallet	397 lb. / 180 kg
Dimensions (W x H x D)	4.3' x 3.3' x 3.0' / 1310 x 1010 x 914 mm
Minimum Distance From Wall	Rear 36" / 914 mm Left 24" / 610 mm Right 24" / 610 mm
Total Space (W x D)	2530 x 2310 mm / 73" x 91"
Temperature	See Printer Requirements
Humidity	See Printer Requirements

WWW.KIP.COM | 800.252.6793

Spatial Requirements

