

# KIP IPS/KS8 Restore Instructions





## *KIP DVD/CD Restore Procedure*

### **Please Review These Instructions Completely Before Restoring**

Restoring the KIP IPS will take approximately 30 minutes to complete.

#### **Procedure for KIP Models:**

- KIP 700 IPS
- KIP 7100/7170 IPS
- KIP 7700/7770 IPS
- KIP 7900/7970 IPS
- KIP 9900 IPS
- KIP C7800 IPS

**Do not use this procedure on any KIP Model computer or controller other than the noted printer models above**

#### **Requirements:**

- USB Keyboard
- USB DVD Drive
- Restore DVD
- Option Keycodes
- Network IP Address

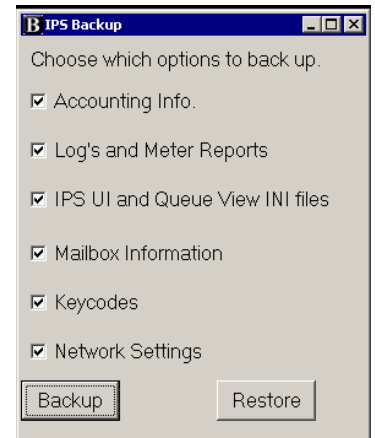
# KIP IPS/KS8 Restore



## *Prior to the Restore*

**Note:** Before beginning this process consider backing up the existing settings. On the desktop of the IPS in the Diagnostics folder there is a Backup tool, run this to back up the IPS. This process will back up the selected items.

**Note:** Once the IPS has been ghosted consider only restoring the necessary items. For Example if something in one of the .ini files was corrupt (causing the need for the ghost) putting this .ini file back in will also put the corruption back in place.

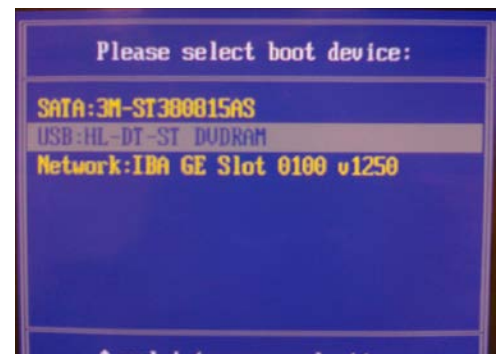


1. Disconnect all removable media and non-factory USB connections. Please mark where each plug was located, these cannot be plugged into any USB port. They all have a port they are assigned to. Connect the keyboard, and USB DVD drive.

2. Insert the Restore DVD into the DVD drive. Turn on the IPS. Immediately get ready for step 3.

3. As soon as the System starts the boot sequence, press the F11 and F12 keys repeatedly until the Boot Select Menu is displayed on the screen.

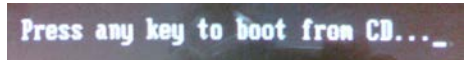
4. Using the arrow keys, select the DVD drive to boot to and press the Enter key. Immediately get ready for step 5.



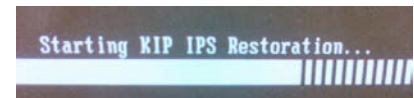
# KIP IPS/KS8 Restore



5. After several seconds the system attempts to boot from the DVD. **Pay attention to the screen at this time.** Press a key on the keyboard when the screen prompts "Press any key to boot from CD..." to start the restoring process.



The automated restore process is now started.



**Note:** Once this process is complete the Screen will become black as it writes the Image from the DVD to the hard drive. This is done to facilitate the internal restore capabilities of the KIP for any possible later use.

6. When the IPS reboots the automated restore process is complete. Unplug the keyboard, and DVD drive. Plug in the USB cables (from Step #1).

**Note:** Plug the USB cables into the same ports as you removed them from. Failure to do so will cause system control issues!

7. The software will now automatically detect the printer model

Once the restore process is complete the install wizard will open guiding the technician through the rest of the setup process.

# KIP IPS/KS8 Restore



## *Install Wizard Steps*

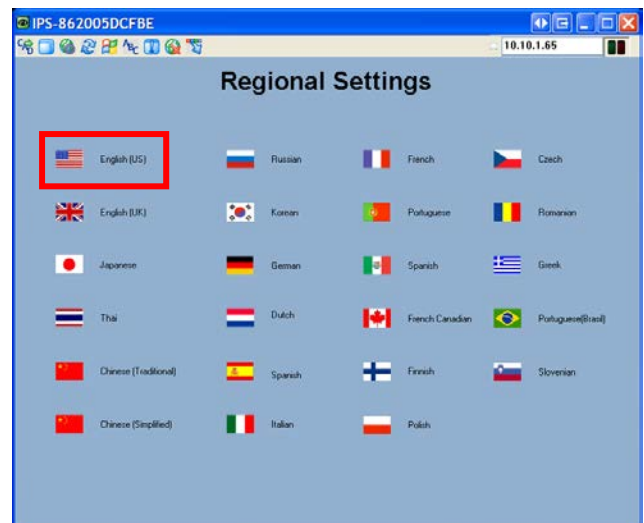
The Installation wizard will assist in the configuration of the KIP Printer.



## *Regional Settings*

Select the Regional Setting Icon to begin.

Please choose the desired Language that the printer will be set up to use.

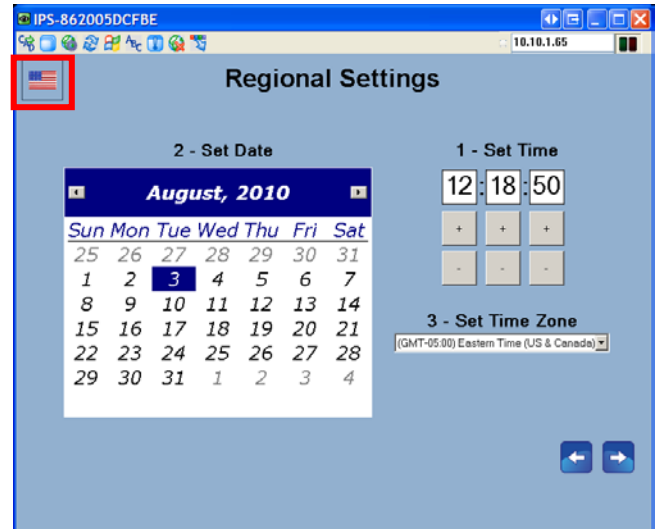


**Note: Step 2 etc. cannot be done until Step one is completed.**

# KIP IPS/KS8 Restore



Once the language has been selected the following Screen is displayed. This window will show the selected language in the upper left corner and allow the correct setting of the Time, Date, and Time Zone to be entered. Please set up correctly according to your location.



**Note:** the KIP Printer default is the Eastern Time Zone. (GMT +6)

## *Supplies and Support*

Allows the entry of Dealer information making it easier for users to contact the dealer for supplies and support.

Select the Supplies and Support Icon.



# KIP IPS/KS8 Restore



Dealer information can be entered for the following:

- Dealer Name
- Supplies #
- Service #
- Website Name
- Website URL

IPS-862005DCFBE 10.10.1.65

### Dealer Info

Dealer Name:

Supplies#:

Service#:

Website Name:

Website URL:

Configure Later

← →

Selecting any of the "white boxes" will bring up the on screen Keyboard and allow for the entry of the information.

IPS-862005DCFBE 10.10.1.65

### Dealer Info

1 2 3 4 5 6 7 8 9 0 - CLR

Q W E R T Y U I O P \

A S D F G H J K L : Enter

Z X C V B N M . / \$

SHIFT

Cancel

Once all of the information has been entered, select the Right arrow to continue.

**Note:** If this information is not available it can be entered at a later time select the Configure Later check box to continue.

IPS-862005DCFBE 10.10.1.65

### Dealer Info

Dealer Name:

Supplies#:

Service#:

Website Name:

Website URL:

Configure Later

← →

# KIP IPS/KS8 Restore

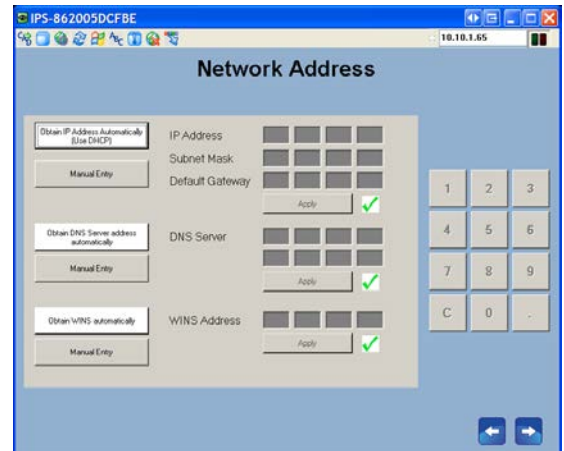
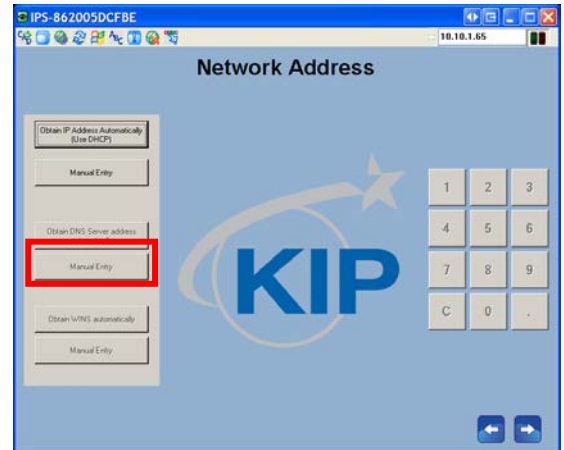


## Network

Select the Network Icon to configure network settings. The values of these settings are obtained from the user (IT Admin)



Selecting the "Obtain IP Address Automatically (Use DHCP)" will bring up the following window. DHCP is the Default setting and just selecting the Right Arrow will continue through the set up steps.

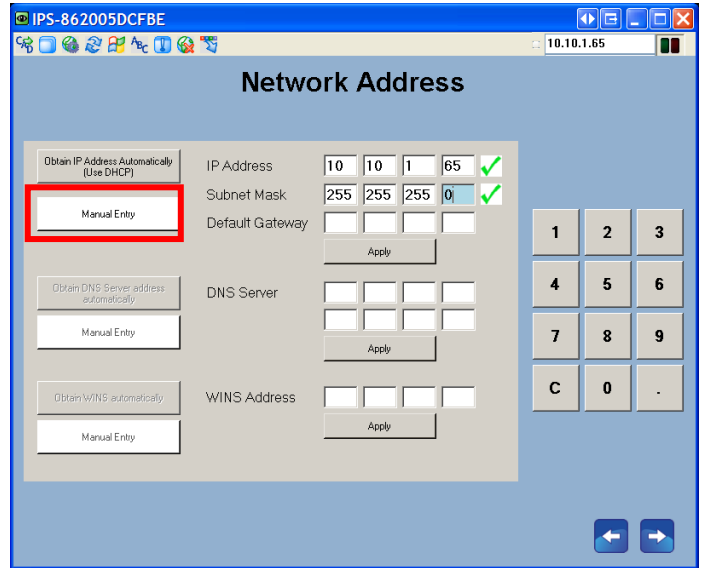




# KIP IPS/KS8 Restore

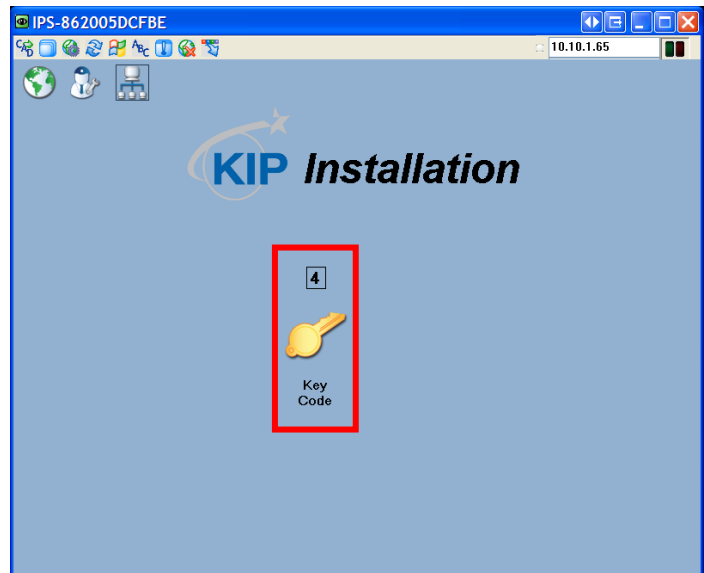


Selecting the Manual Entry button will allow specific (static) network settings.



## Keycode

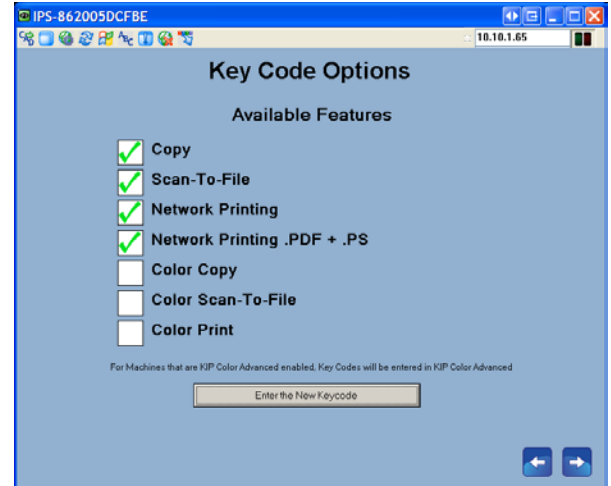
Keycode Entry allows entry of the keycodes for options. Once entered all of the purchased options which that code may enable will be available for use on the KIP Printer.



# KIP IPS/KS8 Restore

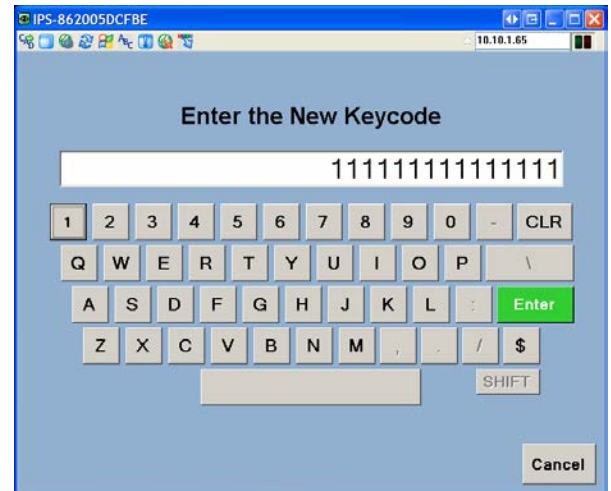


The Key Code Options Screen will display the options available on the KIP Printer. Options will display a green check mark next to that option once the associated keycode has been entered.



Selecting the "Enter the New Keycode" will open the on screen keyboard for entry.

Once all of the code has been entered the "Enter" button will turn green. The code entered will be validated by the system.



**Note:** When entering the keycodes there may be more than one code provided depending on what options were purchased. All of the codes do not need to be entered in order to get the options, simply enter the last code (before the code that begins with a \$ (Color)). This will activate all of the codes available. Once this is done enter the \$ codes to activate the color option (for systems with KIP color Direct).

**Note:** This is done for systems with KIP Color Direct and for systems with KIP Color Advanced. However on systems with KIP Color Advanced the Color checkboxes will not show a checkmark as the Color Advanced Keycode is entered in another location.



## *Toner Setup*

Toner setup is available on the KIP 700M and 7100 KIP printers only. Selecting the Toner Icon will open the screen to start this process.

Note: This step is not needed on printers already installed. This is only needed on new installs.

