

# KIP Cost Review Application



# KIP Cost Review Application



## Contents

Introduction .....	2
Installation .....	3
Cost Review Application Main Menu .....	5
Entering Pricing Information and Usage Categories.....	6
Production Print Summary and Graphic Charts.....	7
Toner Coverage Details .....	9
Media Details .....	9
Details by User .....	10
Details by Job Number.....	11
Details by Description .....	12
Recent Jobs.....	13
Appendix: .....	14

# KIP Cost Review Application



## Introduction

The KIP Cost Review Application (CRA) allows the review the operational costs for single prints and full production runs. Reports generated by the KIP CRA help control and track the cost of printing and copying to allow for allocating printing costs to departments or projects.

Billing logs can be accessed from data emailed periodically by the KIP printer or directly from the controller and are checked by the CRA to confirm that they have not been tampered with or altered. The CRA allows for selecting the Date Range of data to import and what dates the report will cover. Once the billing log is imported into the CRA, the reports are automatically generated for viewing, printing or emailing. Simple to understand graphic charts are available to view trends in printing.

Administrators can supply pricing information which will be used in creating the reports:

- Monochrome Toner Cost (per case)
- Color Toner (per case)
- Monochrome Service Fees
- Color Service Fees

Reports include:

### Usage Summary

- Total Page Count: Monochrome vs. Color
- Total Printed: Monochrome vs. Color
- Total Toner Cartridges Use: Cyan, Magenta, Yellow, and Black
- Average Coverage
- Toner and Service Fees generated
- Total Printed: Monochrome vs. Color

### Coverage Report

A summary of printing separated into Coverage Categories: customize up to 10 categories.

### Media Report

Page Count and Total Amount Printed categorized by Media Type

### User Report and Jobs History

The activity for each User and each Job Name displays Page Count, Square Feet and Fees for Color and Monochrome printing.

### Recent Job Report

The details for the most recent 20 jobs are displayed.

- User and Job Name
- Individual Filename also shows individual Cyan, Magenta, Yellow, and Black toner usage and total printed along with the associated Toner and Service Fees.

# KIP Cost Review Application



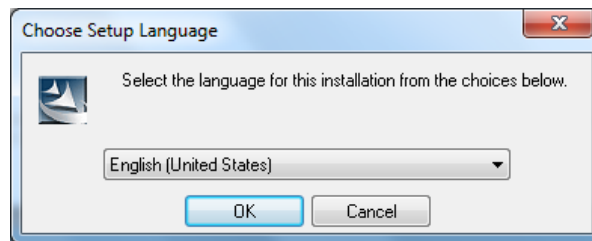
## Installation

The following are general steps of the installation of the Cost Review Application.

**Please note that it is necessary to have the KIP 7.4 version software installed on the KIP for CRA function on the KIP 700M, 7100, 7700, 7900 and 9900 or C7800.**

### Step 1

Double click the installer for the Cost Review Application and set the desired language



**Note:** The language of the KIP System must be that same of the PC that the CRA is also installed on. As an example if the KIP System is in the Japanese language then the PC with CRA must also be in Japanese.

### Step 2

Installer will run installing the application, when prompted select "Next" and accept the terms of the license agreement. And select "Next".

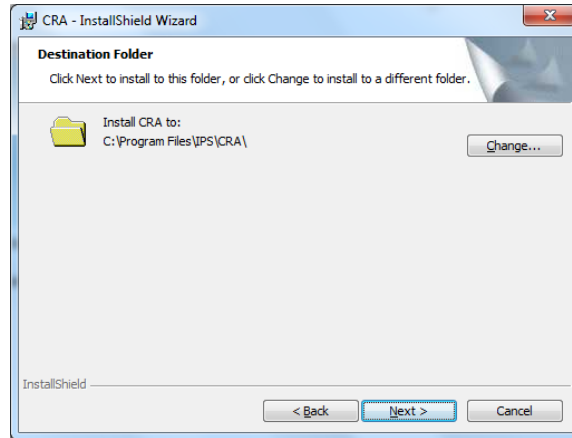


# KIP Cost Review Application



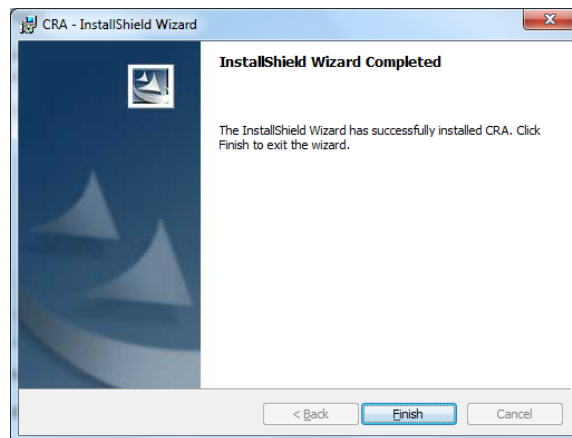
## Step 3

Select the desired location of the install package or leave this as default (recommended) and select "Install" when prompted.



## Step 4

When installation is finished select "Finish" to complete the installation.



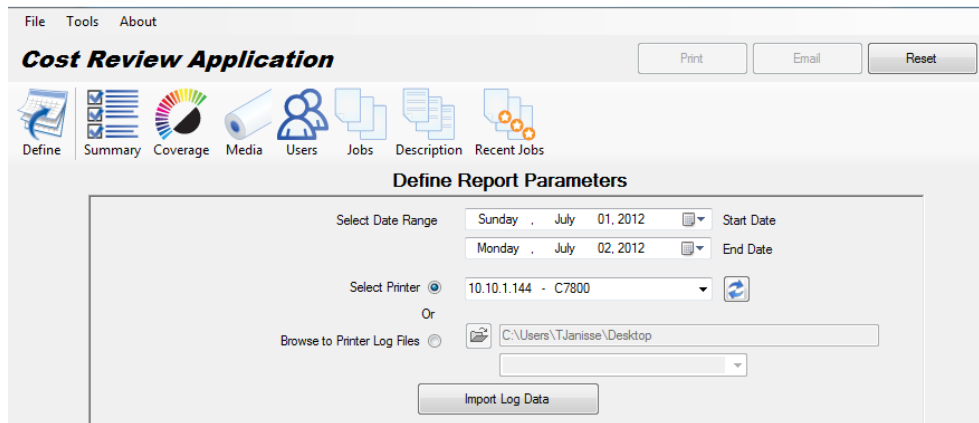
# KIP Cost Review Application



## Cost Review Application Main Menu

The Main Menu allows for entering the Report Parameters for the Start and End of the Report.

Available KIP printers can be selected from a drop down menu or the billing data can be imported from a file location. The billing data can be automatically emailed by the KIP system on a weekly or monthly basis as well as sent immediately when accessed from the KIP PrintNET application.



### Browse to Printer Log Files

If a KIP Printer is not available users can use the Browse feature to utilize files they have already pulled from a KIP monochrome or color printer. Please see the Appendix for what files are necessary for this function.

### Export Data

Export data is used to export the raw log file information as received from the printer into Excel. When exporting data from CRA, be sure to note that many settings on the printer can determine how this data is formatted. The titles in the exported data are for a default configuration and may not always reflect the actual data shown.

### Manual Entry

If for some reason the KIP Printers are not being found and added to the "Select Printer" section, Manual Entry is available. Go to the top of the application and select "Tools" and then "Options". Here the IP Address of the KIP Printer(s) can be manually entered. This will add them to the "Select Printer" dropdown.

**Note: Printer Model must be selected. Please see Appendix for what files are being looked for during Automatic printer location.**

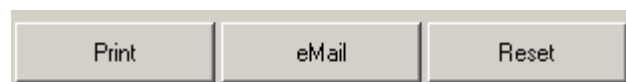
### Reports

Simple access to a variety of reports



### Print and Email

Reports can be printed to a local windows printer or emailed to standard email accounts.





## Entering Pricing Information and Usage Categories

**Pricing Entry** is completed on the PRICE ENTRY tab and includes:

- Cost of Toner (\$)
- Service Fees per Unit (Square or Linear Feet/Meters)

### **Usage Categories**

The cost per print varies based on the toner used. Usage Categories allow for separating the output into sub-categories based on the administrator's priorities. Reports will then separate the billing costs based on the amount of toner used allowing to provide accurate billing.

Example for the KIP C7800:

#### **Monochrome Usage Categories**

- 0 - 6 % (low coverage CAD line)
- 6% - 12% (medium coverage CAD line or area fills)
- 12% - 30% (moderate coverage CAD line with GIS data)
- 30%+ (heavy GIS data or aerial documents)

#### **Color Usage Categories**

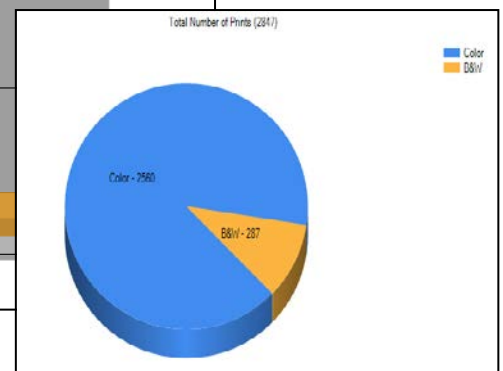
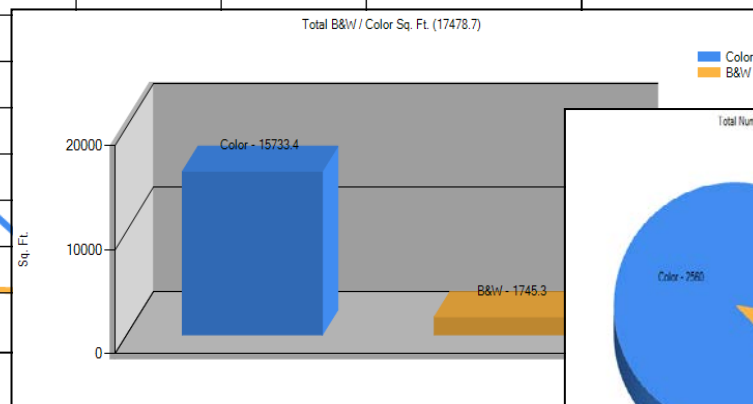
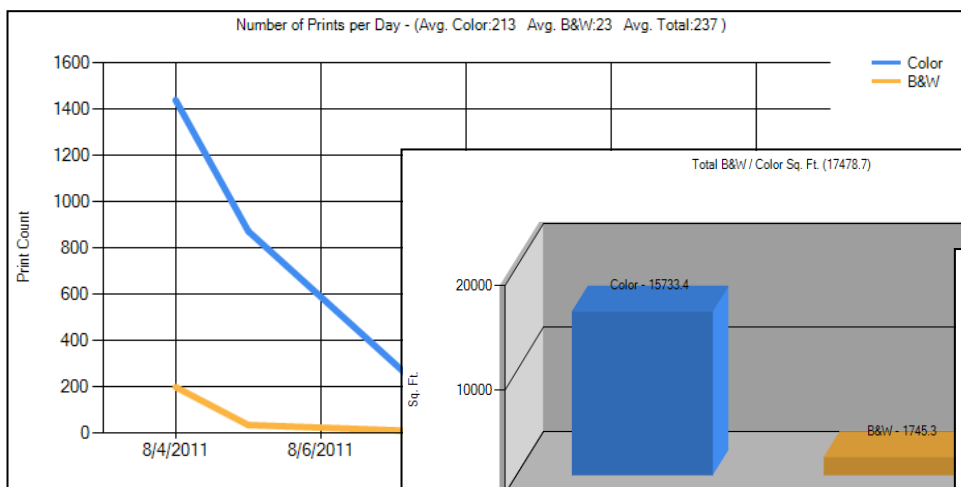
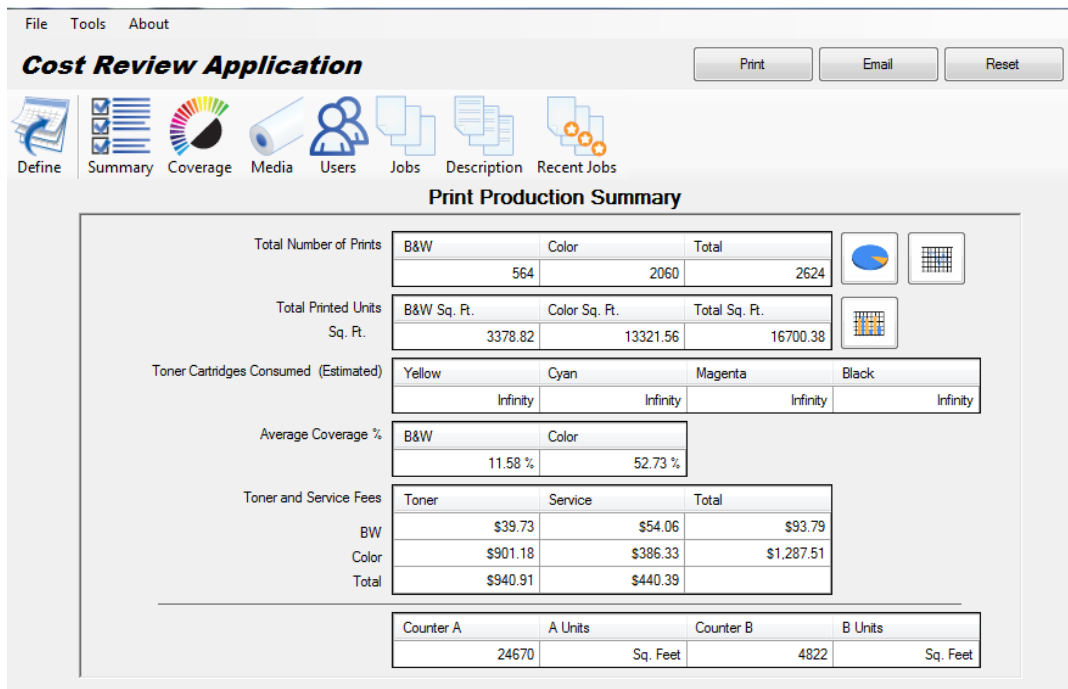
- 0 - 3% (low coverage Color CAD line)
- 3% -8% (medium coverage Color CAD line with area fills)
- 8% - 15% (medium coverage Color CAD)
- 15% - 30% (heavy coverage Color CAD)
- 30% - 60% (heavy coverage Aerial or Technical documents and some Color Graphics)
- 60% - 90% (medium coverage Color Graphics)
- 90% - 120% (heavy coverage Color Graphics and Photographic documents)
- 120%+ (very heavy coverage Color Graphics and Photographic documents)

# KIP Cost Review Application



## Production Print Summary and Graphic Charts

The Production Print Summary report contains information regarding the overall printing and toner usage of the specified report. This report information is based on the Date Range provided on the Report Parameters menu. The Total Counters at the bottom of the report cover all printing for the life of the printer. The chart buttons on the right side allow for viewing charts that provide graphical information in the form of a Pie Chart for the Total Number of prints (Color vs B&W), a Bar Chart for the Total Square Units (Color vs B&W), and Line Graph that shows the Color vs. B&W printing over the range of the dates provided.



# KIP Cost Review Application



**Total Number of Prints** – a page count of the Monochrome and Color prints.

**Total Printed Units** – accumulated totals in Linear or Square units (Meters or Feet) of Monochrome and Color prints.

**Toner Cartridges Consumed** – Approximated number of Toner Cartridges used during the reported Date Range. This is calculated based on the grams of toner used as calculated from the imported billing data.

**Average Coverage** – The reported coverage of individual Monochrome and Color printing totals is averaged across the Total Number of Prints.

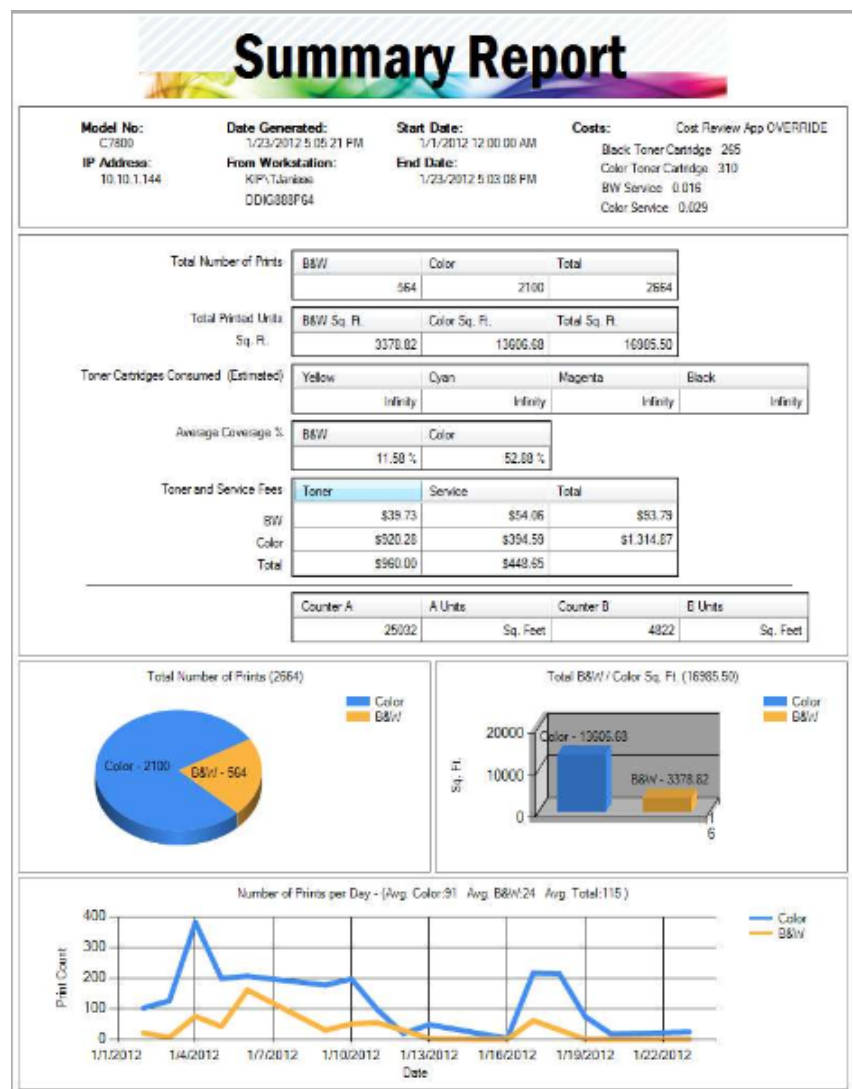
**Toner and Service Fees** – Based on the entry data from the Pricing menu, the Total Printed Units are multiplied by the Toner and Service fees.

**Total Counters** – The Total Counters display the overall printing since the machine was installed.

## Printing the Report (KIP C7800 Example)

When choosing PRINT, the following report will be generated. The title bar includes important information such as:

- Model Number
- IP Address of the printer
- Date the report was generated
- Workstation Login and Name of the person generating the report.
- Start Date of report
- End Date of the report
- Costs Applied including whether the information was provided at the Printer menu or overridden by the person generating the report.



# KIP Cost Review Application



## Toner Coverage Details

The Toner Coverage Details Report provides further details from the Usage Summary Report. Based on the individual percent of coverage the **B&W Coverage Breakdown** section indicates the number of monochrome prints and the square unit for those prints. The Coverage column is broken down in 1 percent increments, but will not list the increments of which no prints were made. The **B&W% Ranges** section indicates the number of monochrome prints and square units used based on the specified Range set in the **Usage Categories**.

Based on the individual percent of coverage the **Color Coverage Breakdown** section indicates the number of color prints and the square unit for those prints. The Coverage column is broken down in 1 percent increments, but will not list the increments of which no prints were made. The **Color% Ranges** section indicates the number of color prints and square units used based on the specified Range set in the **Usage Categories**.

Toner Coverage Summary			
<b>BW Coverage</b>		<b>BW Ranges</b>	
%	# of Orig.	Sq. Ft.	
0.00 %	1	12.91	0 - 6
2.00 %	10	52.89	1 - 0
3.00 %	20	109.01	1 - 0
4.00 %	86	511.55	1 - 0
5.00 %	28	166.00	1 - 0
<b>Total</b>	<b>564</b>	<b>3378.82</b>	<b>Total</b>
			<b>559</b>
			<b>3325.41</b>
<b>Color Coverage</b>		<b>Color Ranges</b>	
%	# of Orig.	Sq. Ft.	
0.00 %	14	22.35	0 - 12
2.00 %	31	188.48	1 - 0
3.00 %	20	80.34	1 - 0
4.00 %	6	32.60	13 - 24
5.00 %	47	287.50	25 - 50
<b>Total</b>	<b>2100</b>	<b>13606.68</b>	<b>Total</b>
			<b>2098</b>
			<b>13591.68</b>

## Media Details

The Media Details Report indicates the media **Type** utilized and the **Print Count** and **Total Units** (Sq Ft or Sq Meter) for that Media.

Media Details		
Media	# of Orig.	Sq. Ft.
BOND - 24# PREMIUM	2607	16439.52
	12	66.91
BOND - 20# STANDARD	3	1.88
GLOSS - 32# GLOSS - SATIN	11	75.58
VELLUM - FUSION SOFT POLY	6	133.50
HEAVY - 40# BOND - SATIN	1	12.61
BOND - 40# BOND	1	11.36
BOND - 32# PREMIUM	23	244.14

# KIP Cost Review Application

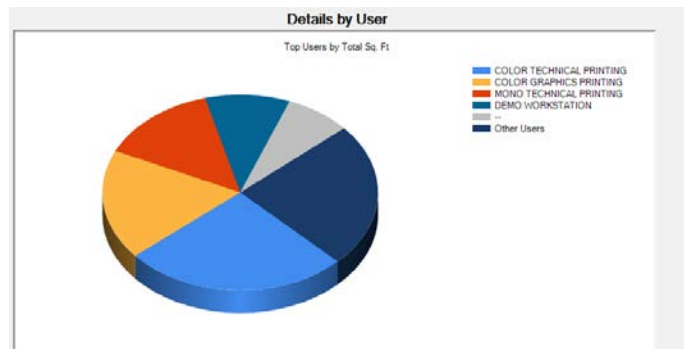
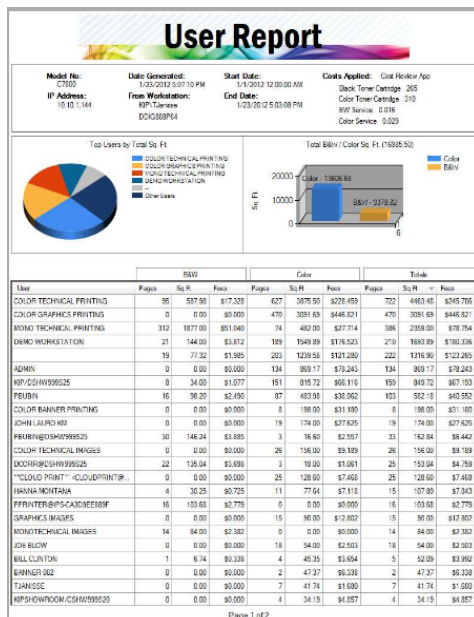
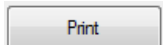


## Details by User

The User Details Report consists of the Monochrome and Color printing and fees for each individual User. This report is sortable by column by simply clicking on the column header.

Details by User									
User Search									
<input type="text"/> <input type="button" value="Search"/> <input type="button" value="Refresh"/> <input type="button" value="Pie Chart"/>									
BW			Color			Total			
User	Pages	Sq. Ft	Fees	Pages	Sq. Ft	Fees	Pages	Sq. Ft	Fees
COLOR TECHNICAL PRINTING	95	587.98	\$17.328	627	3875.50	\$228.459	722	4463.48	\$245.786
COLOR GRAPHICS PRINTING	0	0.00	\$0.000	470	3091.69	\$446.821	470	3091.69	\$446.821
MONO TECHNICAL PRINTING	312	1877.00	\$51.040	74	482.00	\$27.714	386	2359.00	\$78.754
DEMO WORKSTATION	21	144.00	\$3.812	189	1549.89	\$176.523	210	1693.89	\$180.336
	19	77.32	\$1.985	203	1239.58	\$121.280	222	1316.90	\$123.265
ADMIN	0	0.00	\$0.000	134	869.17	\$78.243	134	869.17	\$78.243
KIP/DSHW999S25	8	34.00	\$1.077	151	815.72	\$66.116	159	849.72	\$67.193
PBUBIN	16	98.20	\$2.490	87	483.98	\$38.062	103	582.18	\$40.552
COLOR BANNER PRINTING	0	0.00	\$0.000	8	198.00	\$31.180	8	198.00	\$31.180
JOHN LAURO KM	0	0.00	\$0.000	19	174.00	\$27.625	19	174.00	\$27.625
PBUBIN@DSHW999S25	30	146.24	\$3.885	3	16.60	\$2.557	33	162.84	\$6.442
COLOR TECHNICAL IMAGES	0	0.00	\$0.000	26	156.00	\$9.189	26	156.00	\$9.189

The user can also Print the Users Report by selecting the Print Button in the top right corner as well as view a chart that shows details of the top users and what was being printed by clicking the button for the Pie Chart



# KIP Cost Review Application

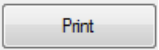


## Details by Job Number

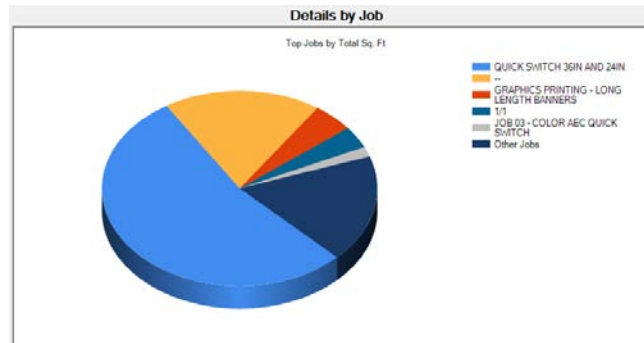
The Jobs Report consists of the Monochrome and Color printing and fees based on a Job or Department number. Search for and print report of a specific job with the "Job Name Search" Function.

Details by Job									
Job Name Search									
<input type="text"/> <input type="button" value="Search"/> <input type="button" value="Refresh"/> <input type="button" value="Pie Chart"/>									
BW			Color			Total			
Distribution	Pages	Sq. Ft.	Fees	Pages	Sq. Ft.	Fees	Pages	Sq. Ft.	Fees
QUICK SWITCH 36IN AND 24IN	362	2195.00	\$60.121	1082	6904.19	\$670.122	1444	9099.19	\$730.243
1/1	68	363.93	\$10.148	46	252.54	\$30.360	114	616.48	\$40.508
	58	313.56	\$8.227	485	2826.86	\$262.710	543	3140.43	\$270.937
JOB 01 - MONO PRINTING	21	144.00	\$3.812	0	0.00	\$0.000	21	144.00	\$3.812
TEST JOB 002 - COLOR WITH MORE	11	66.00	\$1.988	12	72.00	\$4.530	23	138.00	\$6.518
TEST JOB 002	10	60.00	\$1.840	10	60.00	\$4.026	20	120.00	\$5.866
TEST JOB 002 - MONO	10	60.00	\$1.984	0	0.00	\$0.000	10	60.00	\$1.984
TEST JOB 003 - MONO	10	60.00	\$1.779	0	0.00	\$0.000	10	60.00	\$1.779
TEST3 1/1	5	36.99	\$1.064	15	122.99	\$10.771	20	159.98	\$11.835
JOB 2012-001 1/1	3	20.85	\$0.420	0	0.00	\$0.000	3	20.85	\$0.420
SINGLE FILES	2	12.00	\$0.332	0	0.00	\$0.000	2	12.00	\$0.332
36IN X 128IN	1	32.00	\$1.692	1	32.00	\$4.703	2	64.00	\$6.394

The user can also Print the Jobs Report by selecting the Print Button in the top right corner as well as view a chart that shows details of the top Jobs and what was being printed by clicking the button for the Pie Chart



Jobs Report									
Model No: 07000		Date Generated: 1/23/2012 8:05:25 PM		Start Date: 1/19/2012 12:00:00 AM		Costs Applied: Cost Review App			
IP Address: 10.10.1.164		From Workstation: RPT Client		End Date: 1/23/2012 8:05:08 PM		Desk Toner Cartridge: 205		Color Toner Cartridge: 310	
		RPT Client				RPT Service: 0.016		Color Service: 0.020	
Top Jobs by Total Sq. Ft.		Total BW/Color Sq. Ft. (16995.50)							
Distribution	Pages	Sq. Ft.	Fees	Pages	Sq. Ft.	Fees	Pages	Sq. Ft.	Fees
QUICK SWITCH 36IN AND 24IN	362	2195.00	\$60.121	1082	6904.19	\$670.122	1444	9099.19	\$730.243
1/1	68	363.93	\$10.148	46	252.54	\$30.360	114	616.48	\$40.508
GRAPHICS PRINTING - LONG LENGTH BANNERS	0	0.00	\$0.000	73	800.89	\$306.328	73	800.89	\$306.328
TEST JOB 001	0	0.00	\$0.000	44	276.00	\$14.314	44	276.00	\$14.314
TEST JOB 002	11	66.00	\$1.988	12	72.00	\$4.530	23	138.00	\$6.518
TEST JOB 002 - MONO	10	60.00	\$1.840	10	60.00	\$4.026	20	120.00	\$5.866
TEST JOB 003 - MONO	10	60.00	\$1.779	0	0.00	\$0.000	10	60.00	\$1.779
TEST3 1/1	5	36.99	\$1.064	15	122.99	\$10.771	20	159.98	\$11.835
JOB 2012-001 1/1	3	20.85	\$0.420	0	0.00	\$0.000	3	20.85	\$0.420
SINGLE FILES	2	12.00	\$0.332	0	0.00	\$0.000	2	12.00	\$0.332
36IN X 128IN	1	32.00	\$1.692	1	32.00	\$4.703	2	64.00	\$6.394



# KIP Cost Review Application



## Details by Description

The Description Report consists of the Monochrome and Color printing and fees based on data entered into the Description field for accounting. Search for and print report of a specific job Description with the "Description Search" Function.

File Tools About

### Cost Review Application

Print Email Reset

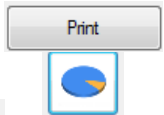
Define Summary Coverage Media Users Jobs Description Recent Jobs

#### Details by Description

Description Search

Description	BW			Color			Totals		
	Pages	Sq.ft.	Fees	Pages	Sq.ft.	Fees	Pages	Sq.ft.	Fees
new one.jpg	0	0.00	\$0.000	4	26.11	\$4.943	4	26.11	\$4.943
Test 1	0	0.00	\$0.000	3	15.93	\$3.045	3	15.93	\$3.045
Test 2	0	0.00	\$0.000	6	31.86	\$6.091	6	31.86	\$6.091
Test 3	0	0.00	\$0.000	3	15.93	\$3.045	3	15.93	\$3.045
Test 4	0	0.00	\$0.000	3	15.93	\$3.045	3	15.93	\$3.045
Test 5	0	0.00	\$0.000	3	15.93	\$3.045	3	15.93	\$3.045

The user can also Print the Description Report by selecting the Print Button in the top right corner as well as view a chart that shows details of the top Jobs by Description and what was being printed by clicking the button for the Pie Chart



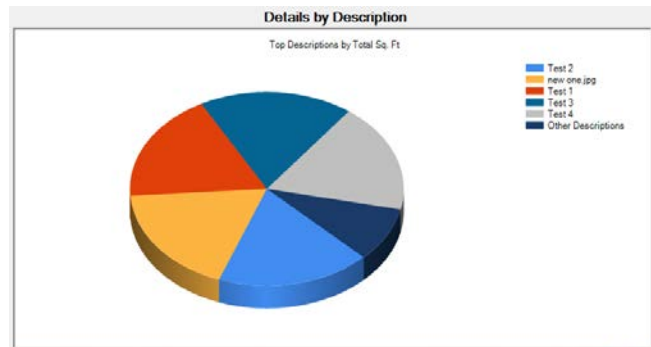
#### Description Report

Model No: 47000 Date Generated: 7/22/2013 2:40:14 PM Start Date: 7/22/2013 12:00:00 AM Costs Applied: ---  
 IP Address: 10.30.1.144 Free Workstation: 807 Server End Date: 7/22/2013 2:10:36 PM Black Tone Cost: \$305  
 DDG38P54 Color Server Cost: \$310 800 Server: \$1070 Color Server: \$3028

Top Descriptions by Test Sq. Ft.

Total BW/Color Sq. Ft. (26.11)

Description	BW			Color			Totals		
	Pages	Sq.ft.	Fees	Pages	Sq.ft.	Fees	Pages	Sq.ft.	Fees
Test 2	6	31.86	\$6.091	6	31.86	\$6.091	12	63.72	\$12.182
new one.jpg	0	0.00	\$0.000	4	26.11	\$4.943	4	26.11	\$4.943
Test 1	0	0.00	\$0.000	3	15.93	\$3.045	3	15.93	\$3.045
Test 3	0	0.00	\$0.000	3	15.93	\$3.045	3	15.93	\$3.045
Test 4	0	0.00	\$0.000	3	15.93	\$3.045	3	15.93	\$3.045
Test 5	0	0.00	\$0.000	3	15.93	\$3.045	3	15.93	\$3.045



# KIP Cost Review Application



## Recent Jobs

The Recent Jobs Report provides a large amount of detail for the last 20 print jobs that are reported in the billing log. The individual detail includes:

- User and Job Name
- Individual Filename also shows individual Cyan, Magenta, Yellow, and Black toner usage and total printed along with the associated Toner and Service Fees.

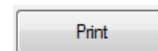
The screenshot shows the 'Recent Jobs Report' window. At the top, there are menu options (File, Tools, About) and buttons for 'Print', 'Email', and 'Reset'. Below the menu is a toolbar with icons for 'Define', 'Summary', 'Coverage', 'Media', 'Users', 'Jobs', 'Description', and 'Recent Jobs'. The main area displays a table with columns for 'Print Count' and 'Sq. Ft.' grouped under 'Fees'. The table shows data for user 'JOHN LAURO KM' and distribution 'SAVE A LOT'. Below this, a detailed table lists individual files with columns for toner percentages (Y, M, C, K), total print count, square feet, and fees.

User	Distribution	Print Count			Sq. Ft.			Fees				
		B&W	Color	Total	B&W	Color	Total	B&W	BW/Sq. Ft.	Color	Color/Sq. Ft.	Total
JOHN LAURO KM	SAVE A LOT	0	8	8	0.00	96.00	96.00	\$0.000	\$0.000	\$15.957	\$0.166	\$15.957

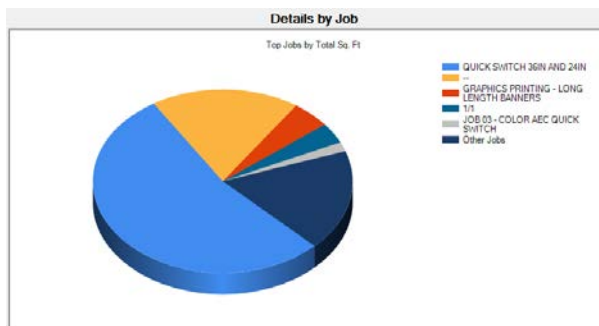
  

Filename	Y	M	C	K	Total	Sq. Ft.	B&W	Color	Fees	
									\$/Sq. Ft.	\$/Sq. Ft.
734SALsigns_Straw.pdf	53.38 %	41.70 %	24.14 %	1.25 %	120.47 %	12.00	\$0.000	\$1.978	\$0.165	\$0.165
824SALsigns_Hominy.pdf	62.68 %	36.18 %	25.48 %	8.24 %	132.58 %	12.00	\$0.000	\$2.122	\$0.177	\$0.177
824SALsigns_ShankHam.pdf	48.11 %	27.91 %	10.74 %	1.35 %	88.11 %	12.00	\$0.000	\$1.556	\$0.130	\$0.130
862SALsigns_TBoneSteak.pdf	72.76 %	43.40 %	24.33 %	7.43 %	147.92 %	12.00	\$0.000	\$2.323	\$0.194	\$0.194
734SALsigns_Straw.pdf	53.38 %	41.70 %	24.14 %	1.25 %	120.47 %	12.00	\$0.000	\$1.978	\$0.165	\$0.165
824SALsigns_Hominy.pdf	62.68 %	36.18 %	25.48 %	8.24 %	132.58 %	12.00	\$0.000	\$2.122	\$0.177	\$0.177
824SALsigns_ShankHam.pdf	48.11 %	27.91 %	10.74 %	1.35 %	88.11 %	12.00	\$0.000	\$1.556	\$0.130	\$0.130
862SALsigns_TBoneSteak.pdf	72.76 %	43.40 %	24.33 %	7.43 %	147.92 %	12.00	\$0.000	\$2.323	\$0.194	\$0.194

The user can also Print the Recent Jobs Report by selecting the Print Button in the top right corner as well as view a chart that shows details of the Recent Jobs and what was being printed by clicking the button for the Pie Chart



This screenshot shows a summary report for a specific job. It includes fields for Model Number, Date generated, Start/End Dates, and Costs Applied. It features two charts: a pie chart for 'Total Number of Prints (1)' and a bar chart for 'Total B&W / Color Sq. Ft. (0.00)'. Below the charts is a table with 'User', 'Distribution', and 'Job Name' information, followed by a summary of B&W and Color print counts and fees. At the bottom, there is a 'Historic' table showing toner usage percentages over time.





## Appendix:

When using the Browse for Printer Log Files functionality of the Cost Review Application there are specific files needed for this to work correctly.

For Color, the following files will be necessary:

ColorLog-*MM*YY.Log

IPSunattend.Dat

Meter*MM*YY.Log

Months.Dat

For Mono the following files will be necessary::

MonoLog-*MM*YY.Log

IpsUnattend.Dat

Meter*MM*YY.Log

Months.dat

There are a multiple ways to get these files:

1. CRA - If you are able to connect to a printer using the CRA Program this will have pulled these files over and put them on your system. These can be easily found by going to Start\Run and typing %TMP%. This will open the Temp folder where these files will be located.
2. KIP PrintNet – PrintNet has the ability to send out the Meter reports via e-mail. These files will be sent in the e-mail to the desired recipient.
3. Manually – Technician can browse to the D:\Monpath1\LOGDIR folder on the KIP Printer and copy these files to a connected network location or even to a USB driver inserted into the KIP.



U.S.A. ■ Phone: (800) 252-6793 ■ Email: [info@kipamerica.com](mailto:info@kipamerica.com) ■ Website: [www.kip.com](http://www.kip.com)

CANADA ■ Phone: (800) 653-7552 ■ Email: [info@kipcanada.com](mailto:info@kipcanada.com) ■ Website: [www.kip.com](http://www.kip.com)

KIP is a registered trademark of the KIP Group. All other product names mentioned herein are trademarks of their respective companies. All product features and specifications are subject to change without notice. Complete product specifications are available upon request.