



# SYSTEM SOFTWARE **K**

2.2



## Multi-Touch Solutions

# SYSTEM SOFTWARE **K**

KIP System K Software Suite provides an enhanced user experience and exceptional productivity for the seamless control of color and b&w print demands. Features include:

- Touchscreen tablet navigation.
- Standardized system icons with tile interface.
- Print submission applications with systems management, configuration and systems status.
- Software applications feature ribbon command bar with extended choice of functions.
- SNMP protocols, cost center control and cloud collaboration.
- System K Windows® Driver, WHQL certified, touch PC compliant with simplified / advanced functions and systems status.

KIP System K Software Suite is uniformly integrated with KIP 900 Series, KIP 800 Color Series, and KIP 70 Series.



# A new generation of wide format functionality

## Table of Contents

---

- KIP Systems Diagram.....4
  
- Multi-Touch Touchscreen**
- KIP Multi-Touch Solutions.....6
- KIP Cloud Connect.....8
  
- Print Management Solutions**
- KIP Touchscreen Technical Interface.....10

## KIP 70 Series



### KIP 70, 800 and 900 Series Multi-touch Solutions

- Copy & Scan to Local/USB/LAN/Cloud (MFP)
- Print from Local/USB/LAN/Cloud
- Super View with Area of Interest
- Cloud Connect
- Data Security
- Smart Scan
- KIPFold Control

#### OPTIONS:

- Removable HD
- Card Reader



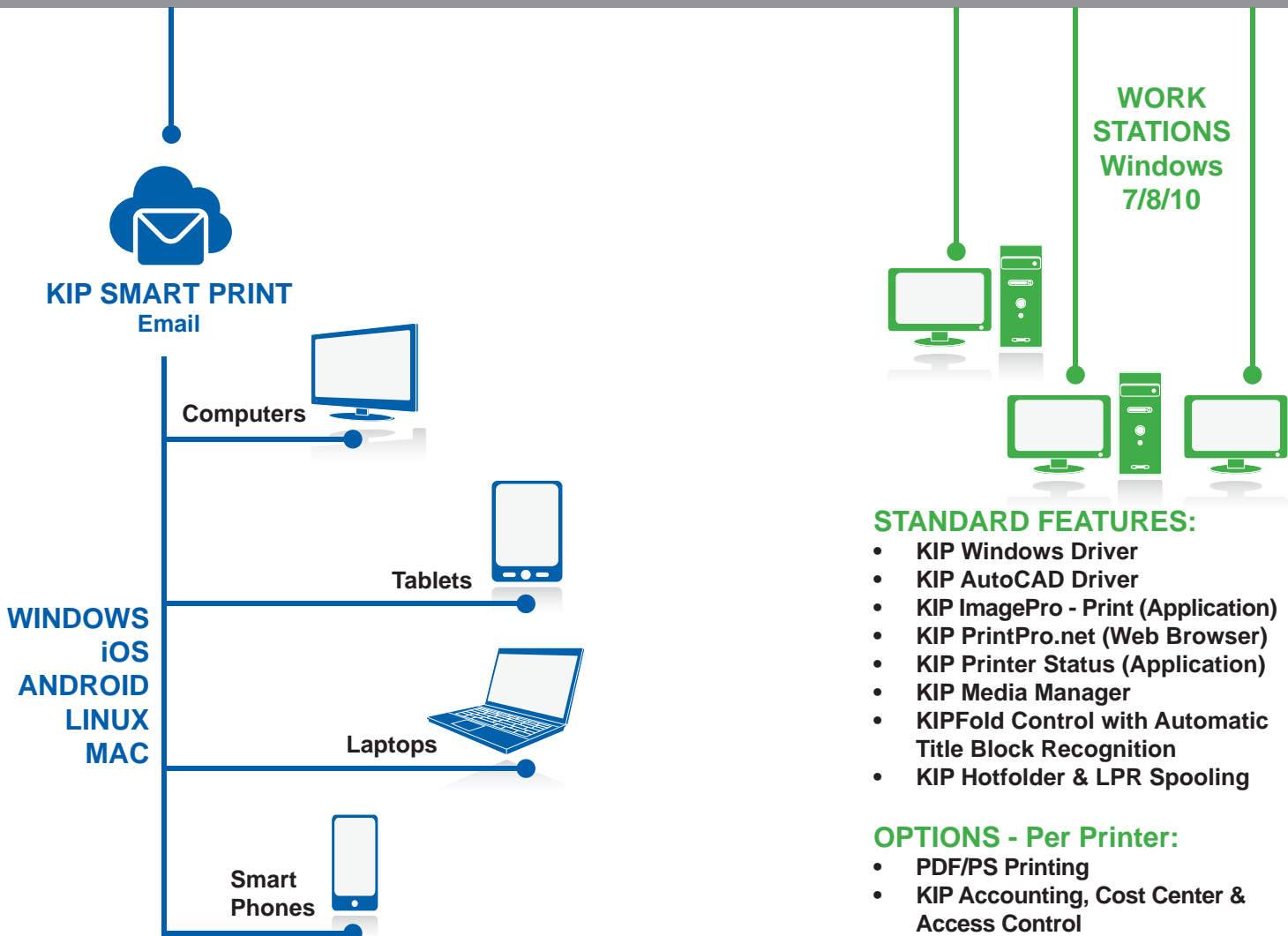
#### MFP

KIP 770 / 71 / 75 / 79

#### Printer

75 / 79

## LAN



# Systems Diagram - 2.2

## KIP 800 Color Series



**MFP**  
KIP 860 / 880 / 890

**Printer**  
850 / 870

## KIP 900 Color Series



**MFP**  
KIP 980 / 990

**Printer**  
KIP 970

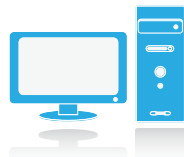
## KIP 720 / 2300 Scan Systems Scan, Copy & Print



- KIP ImagePro - Scan & Copy:**
- Scan - Local/USB/LAN/Cloud
  - Copy - To KIP Color or B&W printer
  - Print - To KIP Color or B&W printer
  - Color Adjustment / Management
  - High Definition Viewer
  - Area of Interest
  - KIPFold Control

### WORK STATIONS

#### MAC



#### STANDARD FEATURES:

- KIP PrintPro.Net (Web Browser)
- PostScript Printer Description File
- KIP Hotfolder Support
- LPR Spooling

#### LINUX



#### STANDARD FEATURES:

- KIP PrintPro.Net (Web Browser)
- KIP Hotfolder Support
- LPR Spooling

### Comprehensive KIP System K features are available in the following brochures:

- KIP Multi-touch Solutions
- KIP PC & Web Print Solutions
- KIP Admin, Accounting & Access Control

# SYSTEM SOFTWARE **K**

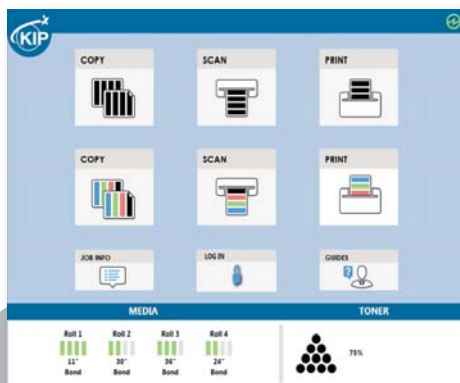


## Multi-Touch Touchscreen

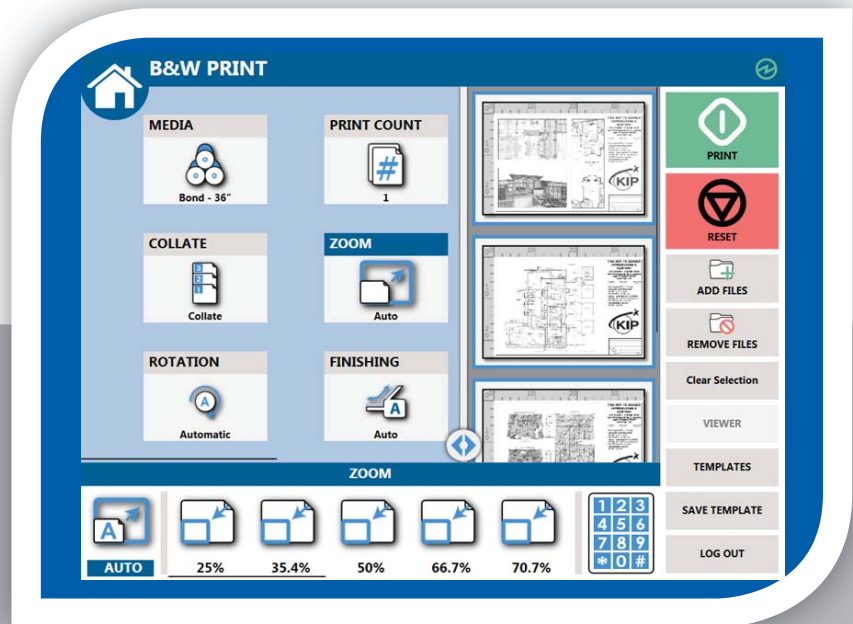
# KIP Multi-Touch Solutions

All system functions for KIP systems are performed through an integrated, 12" multi-touch tablet-like color display to copy, print and scan both color and b&w documents. Walk-up operator conveniences include auto-start, access to unlimited presets, easy to understand touchscreen user guides and real-time on-screen previews. Multi-touch controls provide users with full color intuitive tablet-like controls with swipe, pinch, spread, rotate and tap.

Vivid image previews and on-screen controls allow for saving and printing the Area of Interest. Multi-touch features allow operators to identify documents, adjust image quality and replace documents in collated sets. The integrated color touch display provides a powerful combination of control plus convenience; you don't have to leave the printer to perform important tasks.



KIP Multi-Touch Home Screen



Zoom, Rotate, and Pan the Image Preview  
Using Multi-Touch Controls





Walk-Up Print, Copy and Scan

## KIP Multi-Touch Touchscreen Features



Vivid 12" Color Multi-Touch Display | Intuitive Feature Selection for Easy Operation | Fully Articulating Viewing Angle | Centralized Access to all System Features | Print, Copy and Scan in B&W and Full Color | Super View with Swipe, Pinch, Spread and Rotate | Print Directly from Removable Media, the Cloud and Local Mailboxes | One Touch Access to System Features in 22 Languages | Full Color Guides | Integrated Print Previews | On-screen Set Copy Editor | Concurrent Print and Scan-to-File | Manage Print and History Queue | KIP Accounting Center Integration | KIP Cost Center Integration



### Multi-Touch Features

Super View Image Controls for Print, Copy and Scan | Pinch and Spread to Zoom | Touch to Rotate | Copy, Scan, Email or Print Specific Area of Interest | Selectable User Guides | Automatic Display of User Guide when Replacing Toner/Paper | View Job Queue | Reprint Jobs from History | Selectable System Presets | View System Status from any Screen



### Copy Functions

Concurrent Copy and Print | Copy Single or Collated Sets | Sort and Replace Pages in Collated Set | Copy Area of Interest | Scan to File while Copying | Scale to Factor or Select Page Size Preset | Select Fold Pattern or Auto-Fold Based on Page Size | Automatic Deskew | Stamp Documents with Text or Graphic | Interrupt Jobs for Urgent Tasks | Unlimited System Presets for Stamps and Folding | Unlimited User Templates for Document Types and Job Settings | Select Front or Rear Stacking | Copy Details for KIP Job Accounting and Data Tracking | Color Copy to KIP Color Series Systems



### Print Functions

Print from Local Mailbox/USB/Network Drive | Print from KIP Cloud Connect | WYSIWYP File Preview | Collated Set Printing | Select Fold Pattern or Auto-Fold Based on Page Size | Scale to Factor or Select Page Size Preset | Auto-Print from Email | Print Details for KIP Job Accounting and Data Tracking | Color Print to KIP Color Series Systems



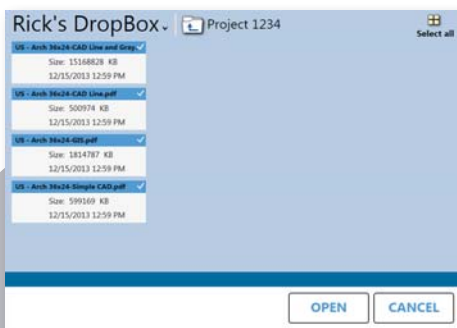
### Scan Functions

Scan to File in B&W or Color | Scan to Local Mailbox/USB/Network Drive/SMB/FTP | Scan to KIP Cloud Connect | Scan to Email | WYSIWYP File Preview | Scan to Multi-Page TIF, PDF or PDF-A | Scan to B/W TIF, Cals Group 4, PDF or PDF-A | Scan to Color TIF, JPEG, PDF or PDF-A | Select 200 – 600 dpi | Select Rotation | Adjust Scanner Speed for Delicate Originals | Scan Details for KIP Job Accounting and Data Tracking

## Multi-Touch Touchscreen

# KIP Cloud Connect

Sharing online content via popular Cloud Services has become a critical collaboration tool. Increased network security and file size restrictions limit the ability of users to Email full size color and b&w technical documents. KIP systems include KIP Cloud Connect – the ability to scan to and print from the cloud directly at the multi-touch display. Whether the Cloud Service is used for personal documents or for project collaboration, KIP systems provide quick access to print color or b&w data. Scan a document to the cloud at the touchscreen and instantly access it at your desktop or mobile device.



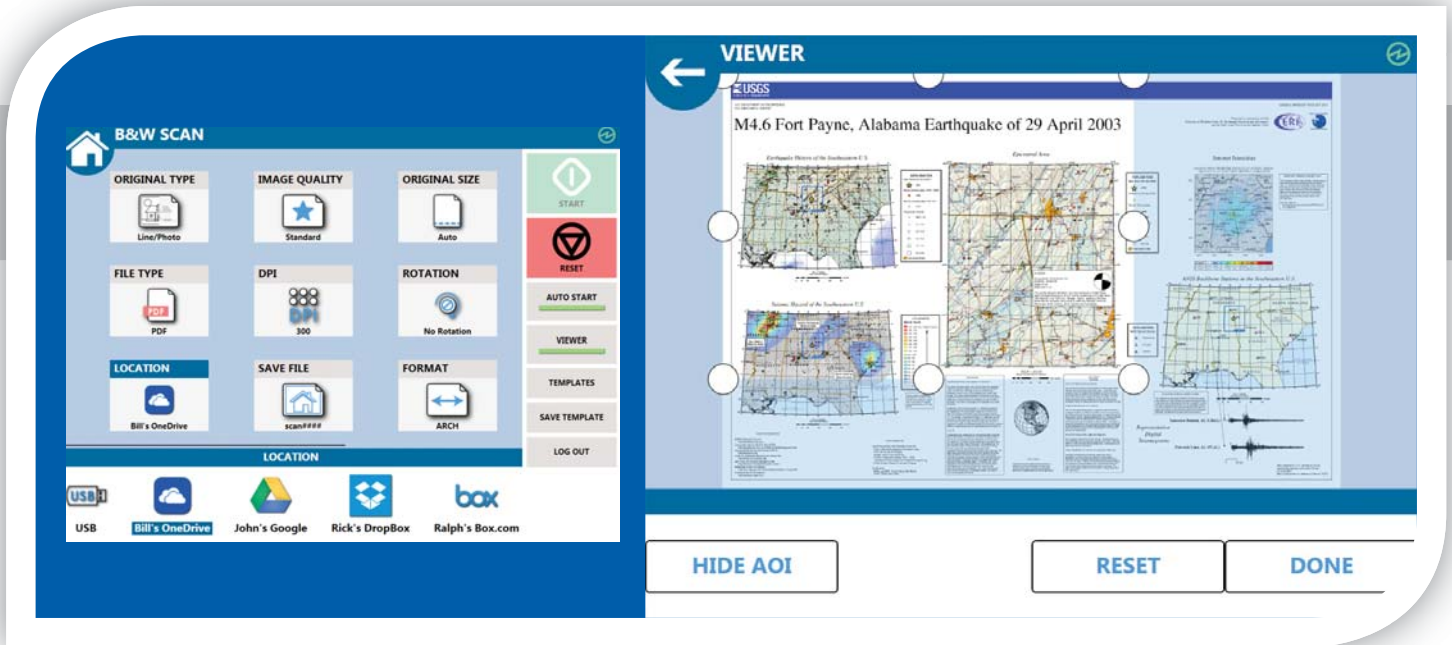
File to Print



Multiple Cloud Locations







Scan to Cloud

Area of Interest to Cloud

## KIP Cloud Connect Key Features



Select from Multiple Cloud Services | Print from KIP Cloud Connect | Scan to KIP Cloud Connect | Unlimited Cloud Connections | Single or Multiple Files | Choose Files from Multiple Cloud Services for Single Print Job | Easy Configuration from Multi-Touch Screen | Collated Sets Printing



### Cloud Service Choices

Microsoft® OneDrive | Microsoft® Office SharePoint | Google Drive | Box.com | Dropbox



### Multi-Touch Print from Cloud

Print to B&W KIP Printers | Print to KIP Color Printers | Print Area of Interest | Build Collated Sets from Multiple Cloud Services



### Multi-Touch Scan to Cloud

Scan to Individual Cloud Location | Scan to Project Cloud Location | Scan Single or Multi-Page Files to Cloud | Scan Color or B&W Documents | Scan Area of Interest



### Image Preview

Multi-Touch Controls: Zoom, Rotate and Pan | Zoom to Area of Interest

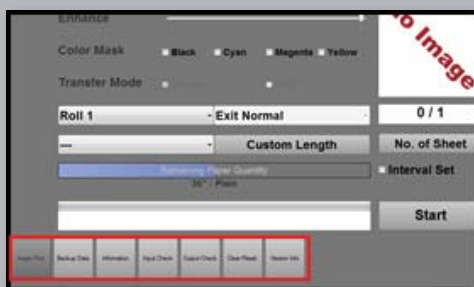
## Print Management Solutions

# KIP Touchscreen Technical Interface

The KIP Touchscreen Technical Interface is a comprehensive program for the control of KIP Systems, Installation & Technical Support.

The touch intuitive and versatile interface includes mode tiling which simplifies the technical experience and management of the KIP System.

- Integrated with KIP Color plus Black & White Systems
- Manage and Modify Printer Functions and Settings
- Review Printer Status and Operational History







**USA:** Phone: (800) 252-6793 | Email: [info@kip.com](mailto:info@kip.com) **CANADA:** Phone: (800) 653-7552 | Email: [info@kipcanada.com](mailto:info@kipcanada.com)

KIP is a registered trademark of the KIP Group. All other product names mentioned herein are trademarks of their respective companies. All product features and specifications are subject to change without notice. Complete product specifications are available upon request. © 2017