



SYSTEM SOFTWARE **K**

2.1



Multi-Touch Solutions

SYSTEM SOFTWARE **K**

KIP System K Software Suite provides an enhanced user experience and exceptional productivity for the seamless control of color and b&w print demands. Features include:

- Touchscreen tablet navigation.
- Standardized system icons with tile interface.
- Print submission applications with systems management, configuration and systems status.
- Software applications feature ribbon command bar with extended choice of functions.
- SNMP protocols, cost center control and cloud collaboration.
- System K Windows® Driver, WHQL certified, touch PC compliant with simplified / advanced functions and systems status.

KIP System K Software Suite is uniformly integrated with KIP 900 Series, KIP 800 Color Series, and KIP 70 Series.



A new generation of wide format functionality

Table of Contents

- KIP Systems Diagram.....4

- Multi-Touch Touchscreen**
- KIP Multi-Touch Solutions.....6
- KIP Cloud Connect.....8

- Print Management Solutions**
- KIP Touchscreen Technical Interface.....10

KIP 70 Series



KIP 70, 800 and 900 Series Multi-touch Solutions

- Copy & Scan to Local/USB/LAN/Cloud (MFP)
- Print from Local/USB/LAN/Cloud
- Super View with Area of Interest
- Cloud Connect
- Data Security
- Smart Scan
- KIPFold Control

OPTIONS:

- Removable HD
- Card Reader



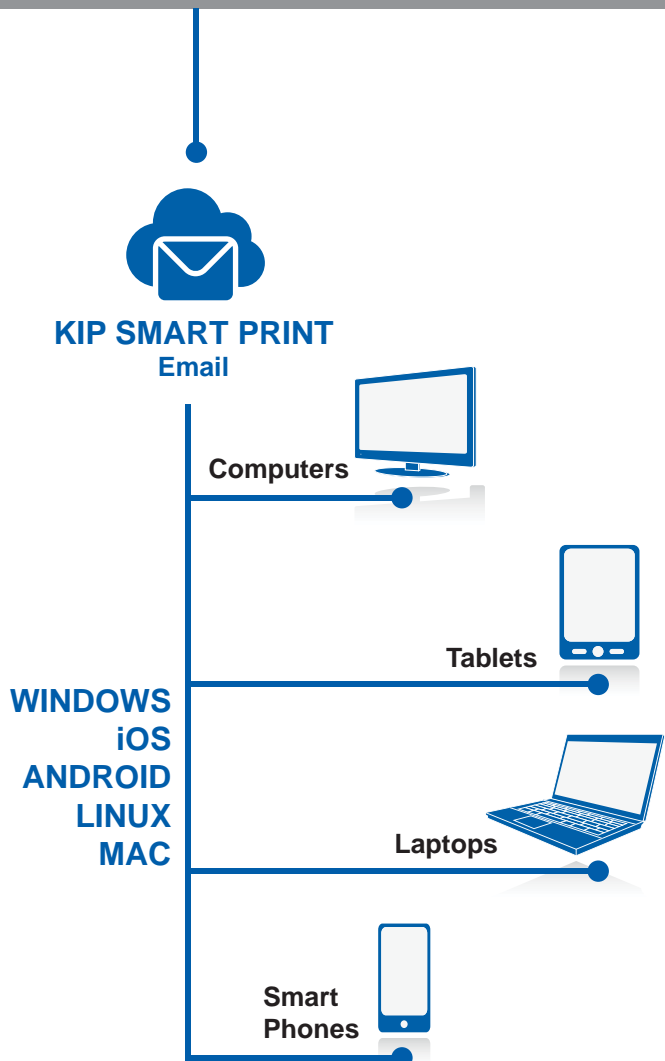
MFP

KIP 770 / 7170 / 75 / 79

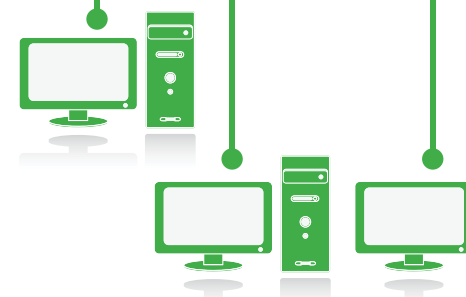
Printer

75 / 79

LAN



WORK STATIONS
Windows
7/8/10



STANDARD FEATURES:

- KIP Windows Driver
- KIP AutoCAD Driver
- KIP ImagePro - Print (Application)
- KIP PrintPro.net (Web Browser)
- KIP Printer Status (Application)
- KIP Media Manager
- KIPFold Control with Automatic Title Block Recognition
- KIP Hotfolder & LPR Spooling

OPTIONS - Per Printer:

- PDF/PS Printing
- KIP Accounting, Cost Center & Access Control

KIP 800 Color Series



MFP
KIP 860 / 880 / 890

Printer
850 / 870

KIP 900 Color Series



MFP
KIP 980 / 990

Printer
KIP 970

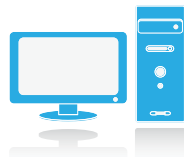
KIP 720 / 2300 Scan Systems Scan, Copy & Print



- KIP ImagePro - Scan & Copy:**
- Scan - Local/USB/LAN/Cloud
 - Copy - To KIP Color or B&W printer
 - Print - To KIP Color or B&W printer
 - Color Adjustment / Management
 - High Definition Viewer
 - Area of Interest
 - KIPFold Control

WORK STATIONS

MAC



STANDARD FEATURES:

- KIP PrintPro.Net (Web Browser)
- PostScript Printer Description File
- KIP Hotfolder Support
- LPR Spooling

LINUX



STANDARD FEATURES:

- KIP PrintPro.Net (Web Browser)
- KIP Hotfolder Support
- LPR Spooling

Comprehensive KIP System K features are available in the following brochures:

- KIP Multi-touch Solutions
- KIP PC & Web Print Solutions
- KIP Admin, Accounting & Access Control

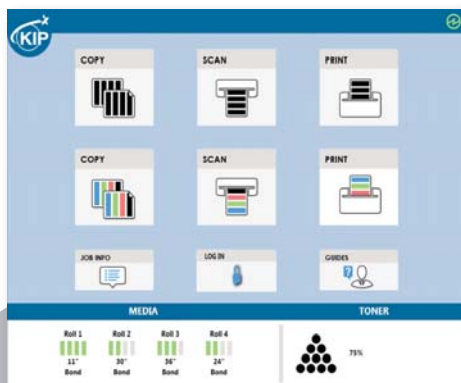


Multi-Touch Touchscreen

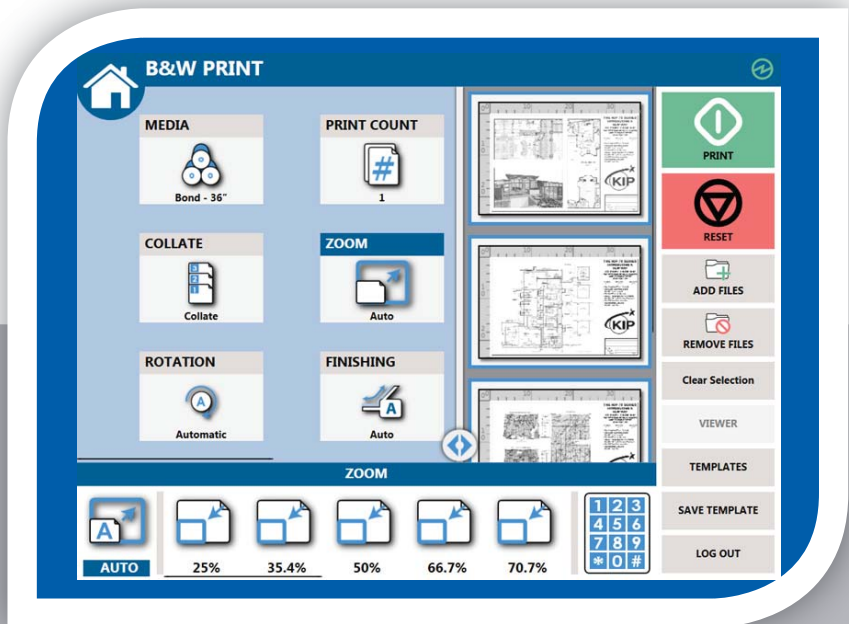
KIP Multi-Touch Solutions

All system functions for KIP systems are performed through an integrated, 12" multi-touch tablet-like color display to copy, print and scan both color and b&w documents. Walk-up operator conveniences include auto-start, access to unlimited presets, easy to understand touchscreen user guides and real-time on-screen previews. Multi-touch controls provide users with full color intuitive tablet-like controls with swipe, pinch, spread, rotate and tap.

Vivid image previews and on-screen controls allow for saving and printing the Area of Interest. Multi-touch features allow operators to identify documents, adjust image quality and replace documents in collated sets. The integrated color touch display provides a powerful combination of control plus convenience; you don't have to leave the printer to perform important tasks.



KIP Multi-Touch Home Screen



Zoom, Rotate, and Pan the Image Preview Using Multi-Touch Controls



Walk-Up Print, Copy and Scan

KIP Multi-Touch Touchscreen Features



Vivid 12" Color Multi-Touch Display | Intuitive Feature Selection for Easy Operation | Fully Articulating Viewing Angle | Centralized Access to all System Features | Print, Copy and Scan in B&W and Full Color | Super View with Swipe, Pinch, Spread and Rotate | Print Directly from Removable Media, the Cloud and Local Mailboxes | One Touch Access to System Features in 22 Languages | Full Color Guides | Integrated Print Previews | On-screen Set Copy Editor | Concurrent Print and Scan-to-File | Manage Print and History Queue | KIP Accounting Center Integration | KIP Cost Center Integration



Multi-Touch Features

Super View Image Controls for Print, Copy and Scan | Pinch and Spread to Zoom | Touch to Rotate | Copy, Scan, Email or Print Specific Area of Interest | Selectable User Guides | Automatic Display of User Guide when Replacing Toner/Paper | View Job Queue | Reprint Jobs from History | Selectable System Presets | View System Status from any Screen



Copy Functions

Concurrent Copy and Print | Copy Single or Collated Sets | Sort and Replace Pages in Collated Set | Copy Area of Interest | Scan to File while Copying | Scale to Factor or Select Page Size Preset | Select Fold Pattern or Auto-Fold Based on Page Size | Automatic Deskew | Stamp Documents with Text or Graphic | Interrupt Jobs for Urgent Tasks | Unlimited System Presets for Stamps and Folding | Unlimited User Templates for Document Types and Job Settings | Select Front or Rear Stacking | Copy Details for KIP Job Accounting and Data Tracking | Color Copy to KIP Color Series Systems



Print Functions

Print from Local Mailbox/USB/Network Drive | Print from KIP Cloud Connect | WYSIWYP File Preview | Collated Set Printing | Select Fold Pattern or Auto-Fold Based on Page Size | Scale to Factor or Select Page Size Preset | Auto-Print from Email | Print Details for KIP Job Accounting and Data Tracking | Color Print to KIP Color Series Systems



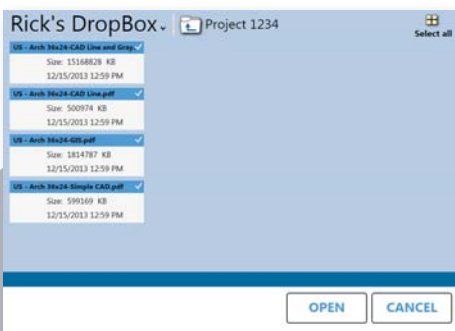
Scan Functions

Scan to File in B&W or Color | Scan to Local Mailbox/USB/Network Drive/SMB/FTP | Scan to KIP Cloud Connect | Scan to Email | WYSIWYP File Preview | Scan to Multi-Page TIF, PDF or PDF-A | Scan to B/W TIF, Cals Group 4, PDF or PDF-A | Scan to Color TIF, JPEG, PDF or PDF-A | Select 200 – 600 dpi | Select Rotation | Adjust Scanner Speed for Delicate Originals | Scan Details for KIP Job Accounting and Data Tracking

Multi-Touch Touchscreen

KIP Cloud Connect

Sharing online content via popular Cloud Services has become a critical collaboration tool. Increased network security and file size restrictions limit the ability of users to Email full size color and b&w technical documents. KIP systems include KIP Cloud Connect – the ability to scan to and print from the cloud directly at the multi-touch display. Whether the Cloud Service is used for personal documents or for project collaboration, KIP systems provide quick access to print color or b&w data. Scan a document to the cloud at the touchscreen and instantly access it at your desktop or mobile device.

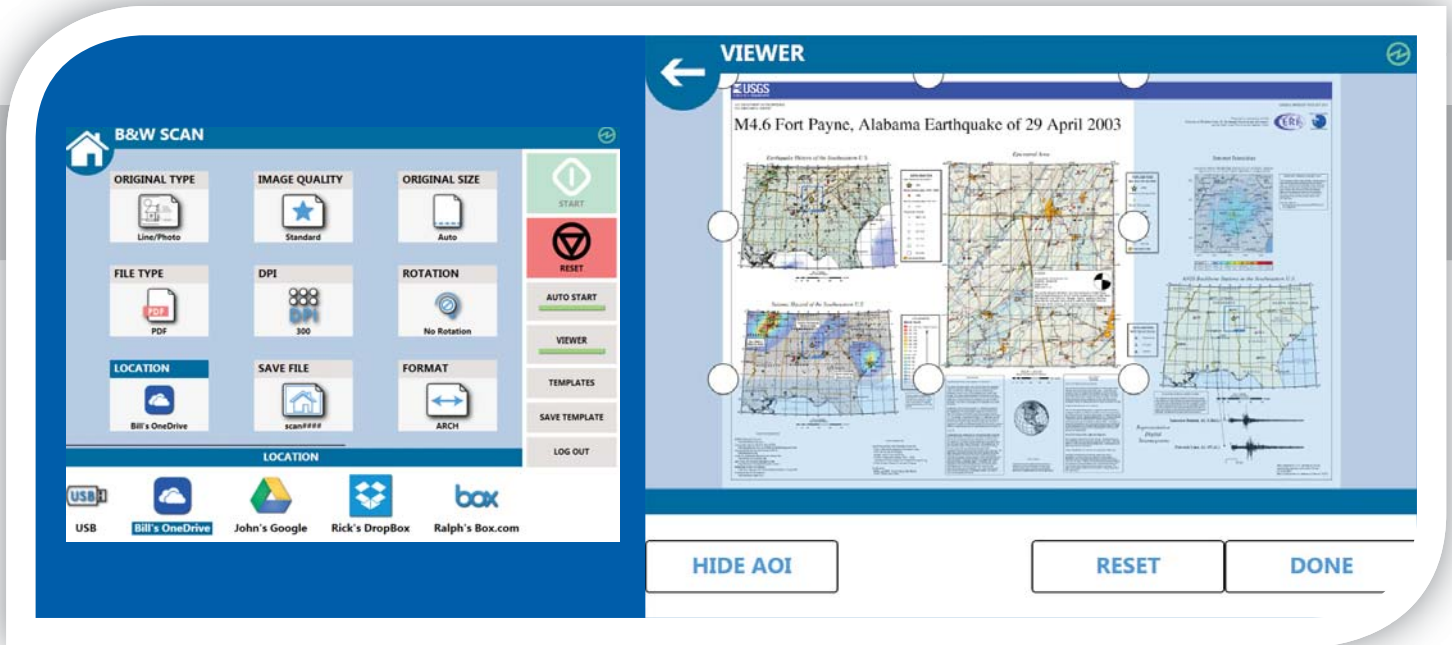


File to Print



Multiple Cloud Locations





Scan to Cloud

Area of Interest to Cloud

KIP Cloud Connect Key Features



Select from Multiple Cloud Services | Print from KIP Cloud Connect | Scan to KIP Cloud Connect | Unlimited Cloud Connections | Single or Multiple Files | Choose Files from Multiple Cloud Services for Single Print Job | Easy Configuration from Multi-Touch Screen | Collated Sets Printing



Cloud Service Choices

Microsoft® OneDrive | Microsoft® Office SharePoint | Google Drive | Box.com | Dropbox



Multi-Touch Print from Cloud

Print to B&W KIP Printers | Print to KIP Color Printers | Print Area of Interest | Build Collated Sets from Multiple Cloud Services



Multi-Touch Scan to Cloud

Scan to Individual Cloud Location | Scan to Project Cloud Location | Scan Single or Multi-Page Files to Cloud | Scan Color or B&W Documents | Scan Area of Interest



Image Preview

Multi-Touch Controls: Zoom, Rotate and Pan | Zoom to Area of Interest

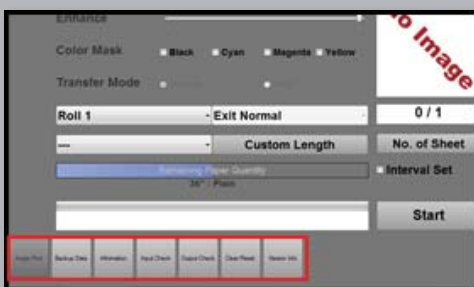
Print Management Solutions

KIP Touchscreen Technical Interface

The KIP Touchscreen Technical Interface is a comprehensive program for the control of KIP Systems, Installation & Technical Support.

The touch intuitive and versatile interface includes mode tiling which simplifies the technical experience and management of the KIP System.

- Integrated with KIP Color plus Black & White Systems
- Manage and Modify Printer Functions and Settings
- Review Printer Status and Operational History





USA: Phone: (800) 252-6793 | Email: info@kip.com **CANADA:** Phone: (800) 653-7552 | Email: info@kipcanada.com

KIP is a registered trademark of the KIP Group. All other product names mentioned herein are trademarks of their respective companies. All product features and specifications are subject to change without notice. Complete product specifications are available upon request. © 2017